

Table of contents

LEDLightExpert.com - Escondido Fish and Game Club	
Table of contents	1
SB07-150W	
Luminaire Data Sheet	2
SP01-500W	
Luminaire Data Sheet	3
Exterior Scene 1	
Luminaire parts list	4
Luminaires (layout plan)	5
Luminaires (coordinates list)	6
3D Rendering	8
False Color Rendering	9
Exterior Surfaces	
Ground Element 1	
Surface 1	
Isolines (E)	10
Value Chart (E)	11
Calculation Surface 1	
Isolines (E, Perpendicular)	12
Value Chart (E, Perpendicular)	13

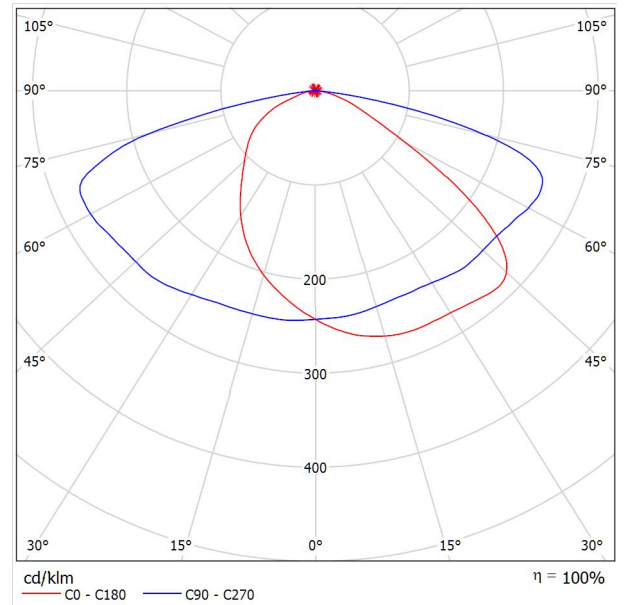
www.LEDLightExpert.com

Operator LEDLightExpert.com
Telephone
Fax
e-Mail

SB07-150W / Luminaire Data Sheet

Luminous emittance 1:

See our luminaire catalog for an image of the luminaire.



Luminaire classification according to CIE: 100
CIE flux code: 37 71 95 100 100

Due to missing symmetry properties, no UGR table can be displayed for this luminaire.

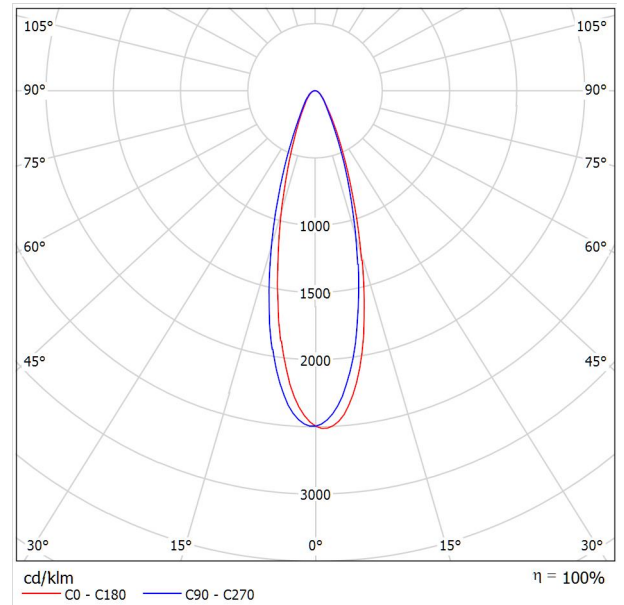
www.LEDLightExpert.com

Operator LEDLightExpert.com
Telephone
Fax
e-Mail

SP01-500W / Luminaire Data Sheet

Luminous emittance 1:

See our luminaire catalog for an image of the luminaire.



Luminaire classification according to CIE: 100
CIE flux code: 84 94 99 100 100

Due to missing symmetry properties, no UGR table can be displayed for this luminaire.

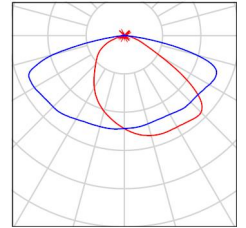
www.LEDLightExpert.com

Operator LEDLightExpert.com
Telephone
Fax
e-Mail

Exterior Scene 1 / Luminaire parts list

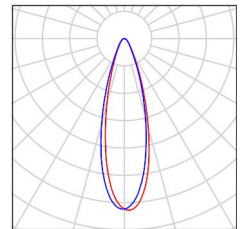
4 Pieces SB07-150W
Article No.:
Luminous flux (Luminaire): 19587 lm
Luminous flux (Lamps): 19587 lm
Luminaire Wattage: 156.4 W
Luminaire classification according to CIE: 100
CIE flux code: 37 71 95 100 100
Fitting: 1 x User defined (Correction Factor 1.000).

See our luminaire catalog for an image of the luminaire.

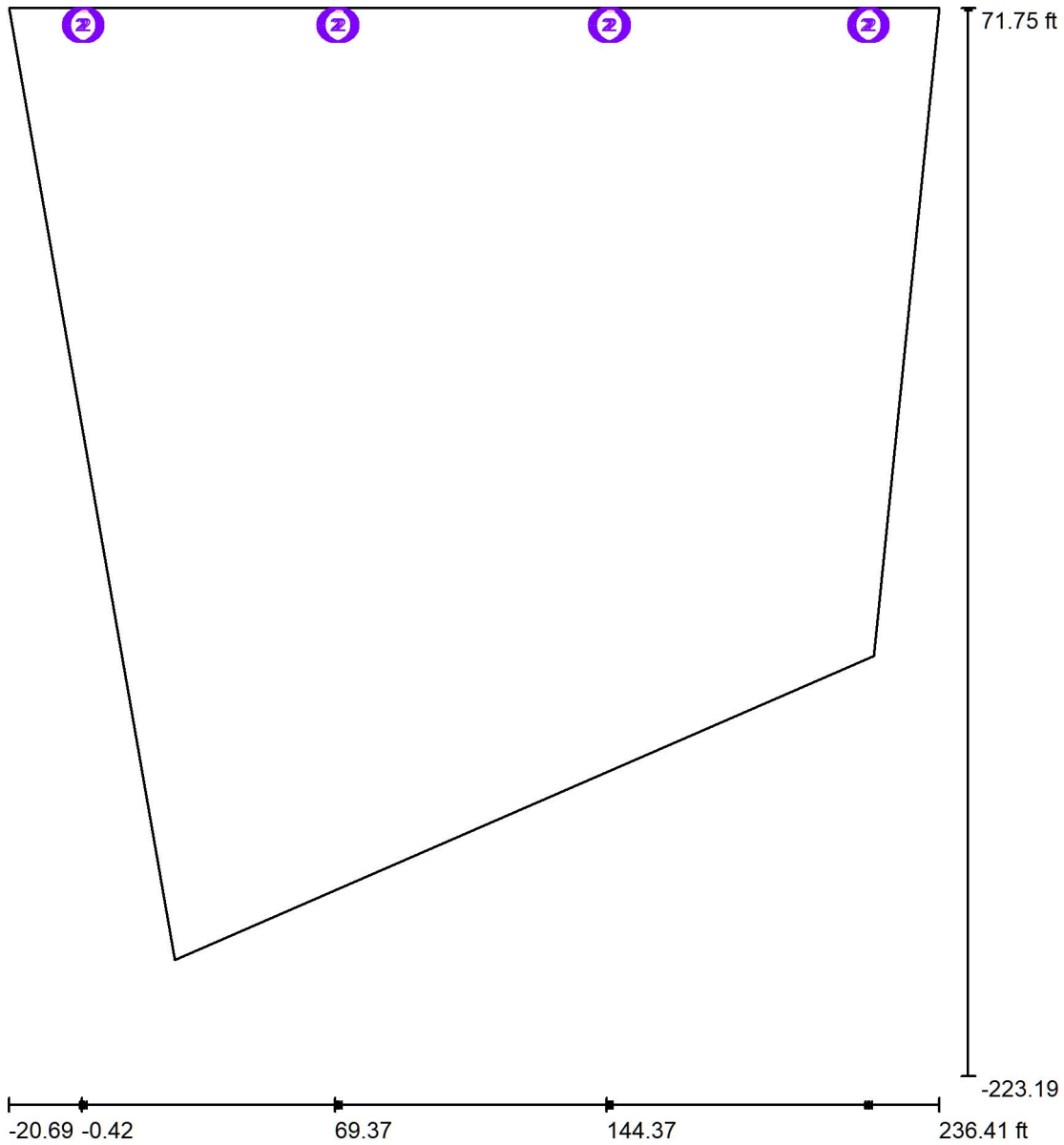


16 Pieces SP01-500W
Article No.:
Luminous flux (Luminaire): 65032 lm
Luminous flux (Lamps): 65068 lm
Luminaire Wattage: 511.4 W
Luminaire classification according to CIE: 100
CIE flux code: 84 94 99 100 100
Fitting: 1 x User defined (Correction Factor 1.000).

See our luminaire catalog for an image of the luminaire.



Exterior Scene 1 / Luminaires (layout plan)



Scale 1 : 608

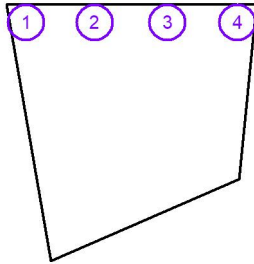
Luminaire Parts List

No.	Pieces	Designation
1	4	SB07-150W
2	16	SP01-500W

Exterior Scene 1 / Luminaires (coordinates list)

SB07-150W

19587 lm, 156.4 W, 1 x 1 x User defined (Correction Factor 1.000).

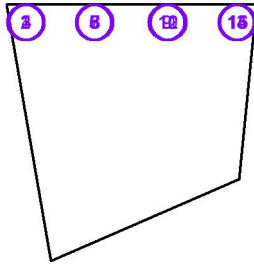


No.	Position [ft]			Rotation [°]		
	X	Y	Z	X	Y	Z
1	0.000	70.999	19.000	0.0	-30.0	-90.0
2	70.174	71.007	19.000	0.0	-30.0	-90.0
3	145.173	71.007	19.000	0.0	-30.0	-90.0
4	216.851	71.361	19.000	0.0	-30.0	-90.0

Exterior Scene 1 / Luminaires (coordinates list)

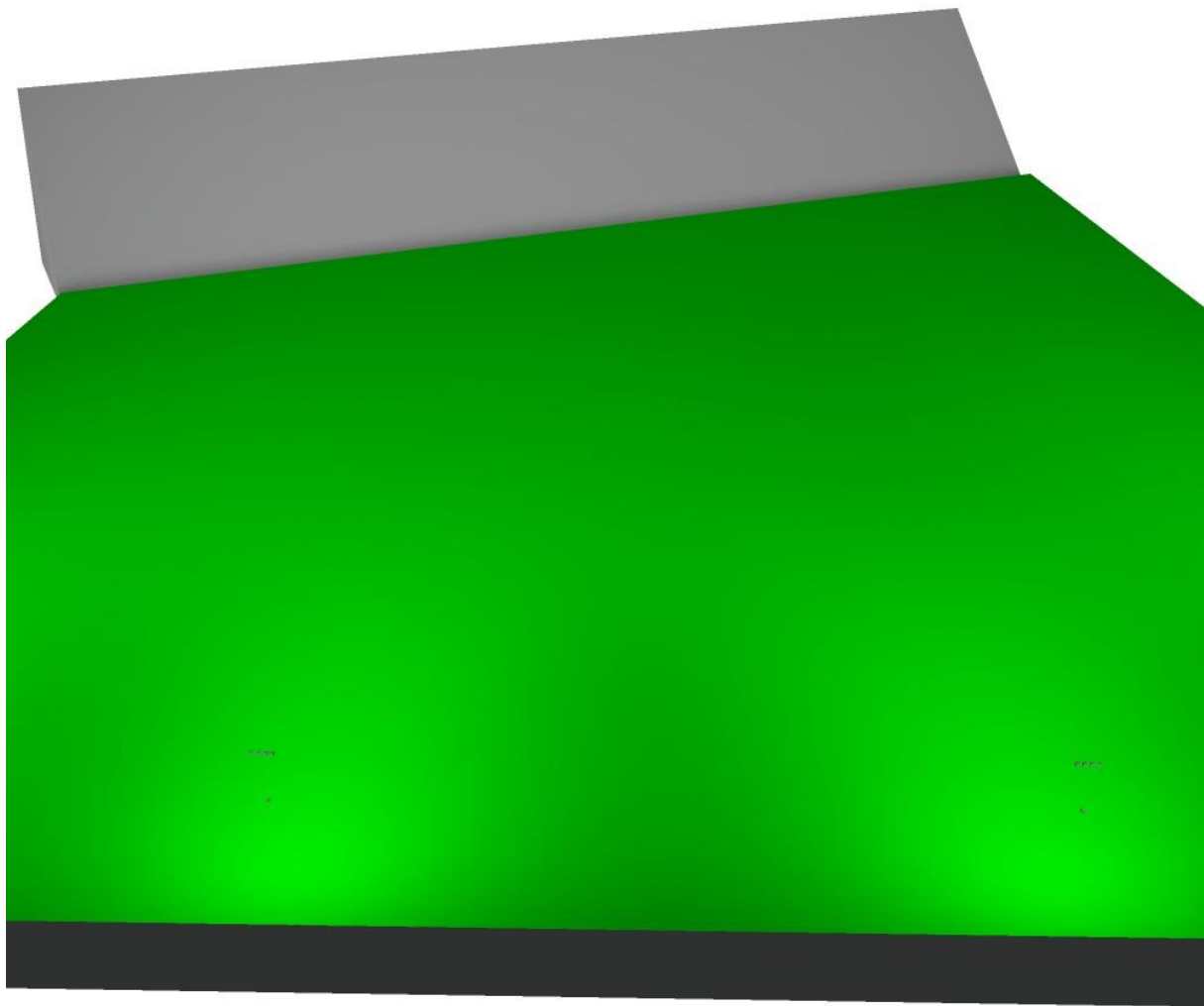
SP01-500W

65032 lm, 511.4 W, 1 x 1 x User defined (Correction Factor 1.000).

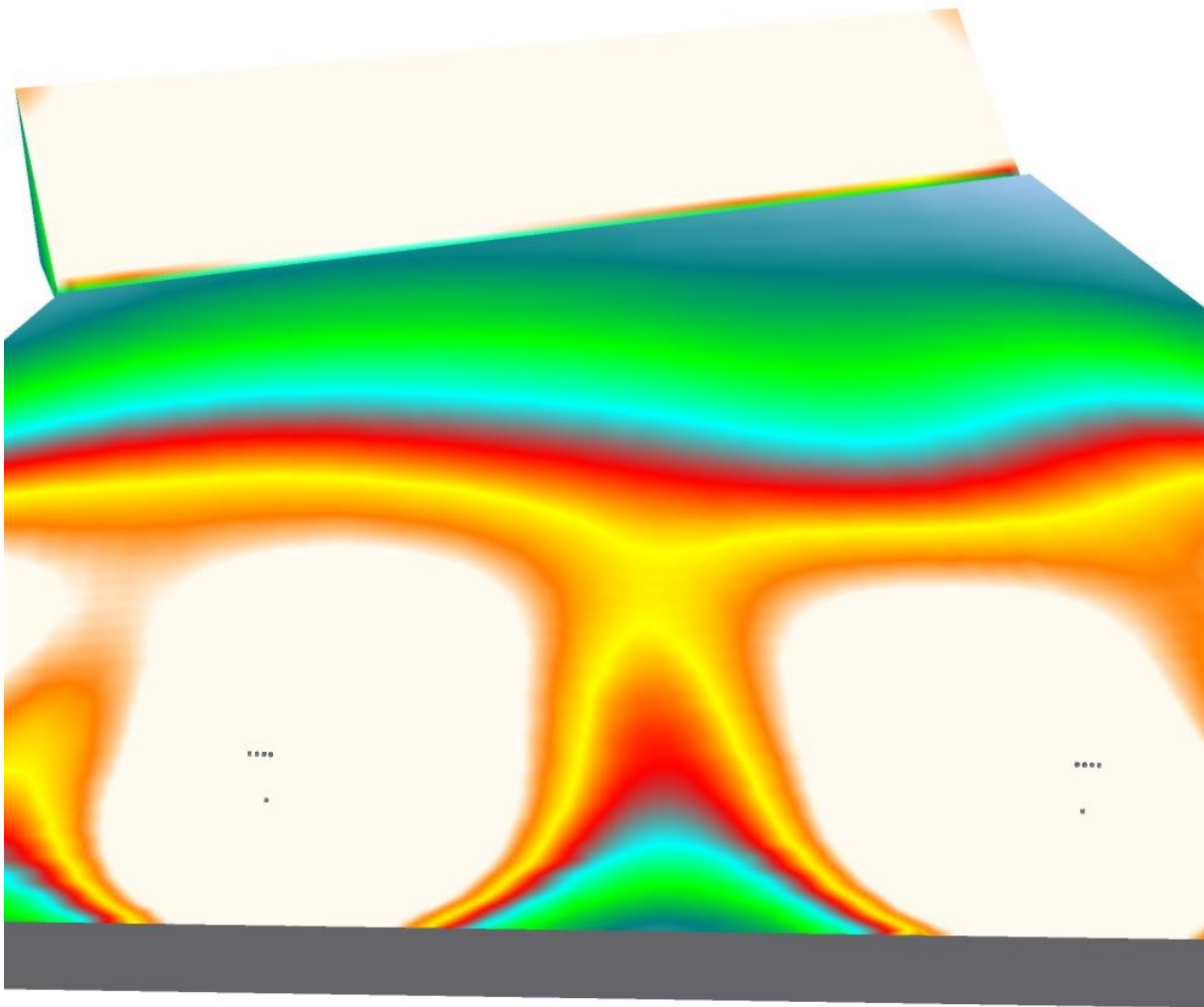


No.	Position [ft]			Rotation [°]		
	X	Y	Z	X	Y	Z
1	-1.000	71.267	24.000	0.0	-90.0	-87.0
2	-0.415	71.216	24.000	0.0	-90.0	-83.0
3	0.213	71.213	24.000	0.0	-90.0	-78.0
4	0.845	71.187	24.000	0.0	-90.0	-73.0
5	69.371	71.251	24.000	0.0	-90.0	-105.0
6	69.955	71.200	24.000	0.0	-90.0	-95.0
7	70.584	71.196	24.000	0.0	-90.0	-80.0
8	71.216	71.170	24.000	0.0	-90.0	-70.0
9	144.370	71.251	24.000	0.0	-90.0	-105.0
10	144.955	71.200	24.000	0.0	-90.0	-95.0
11	145.583	71.196	24.000	0.0	-90.0	-85.0
12	146.215	71.170	24.000	0.0	-90.0	-75.0
13	215.903	71.568	24.000	0.0	-90.0	-115.0
14	216.488	71.517	24.000	0.0	-90.0	-105.0
15	217.116	71.514	24.000	0.0	-90.0	-95.0
16	217.748	71.488	24.000	0.0	-90.0	-90.0

Exterior Scene 1 / 3D Rendering

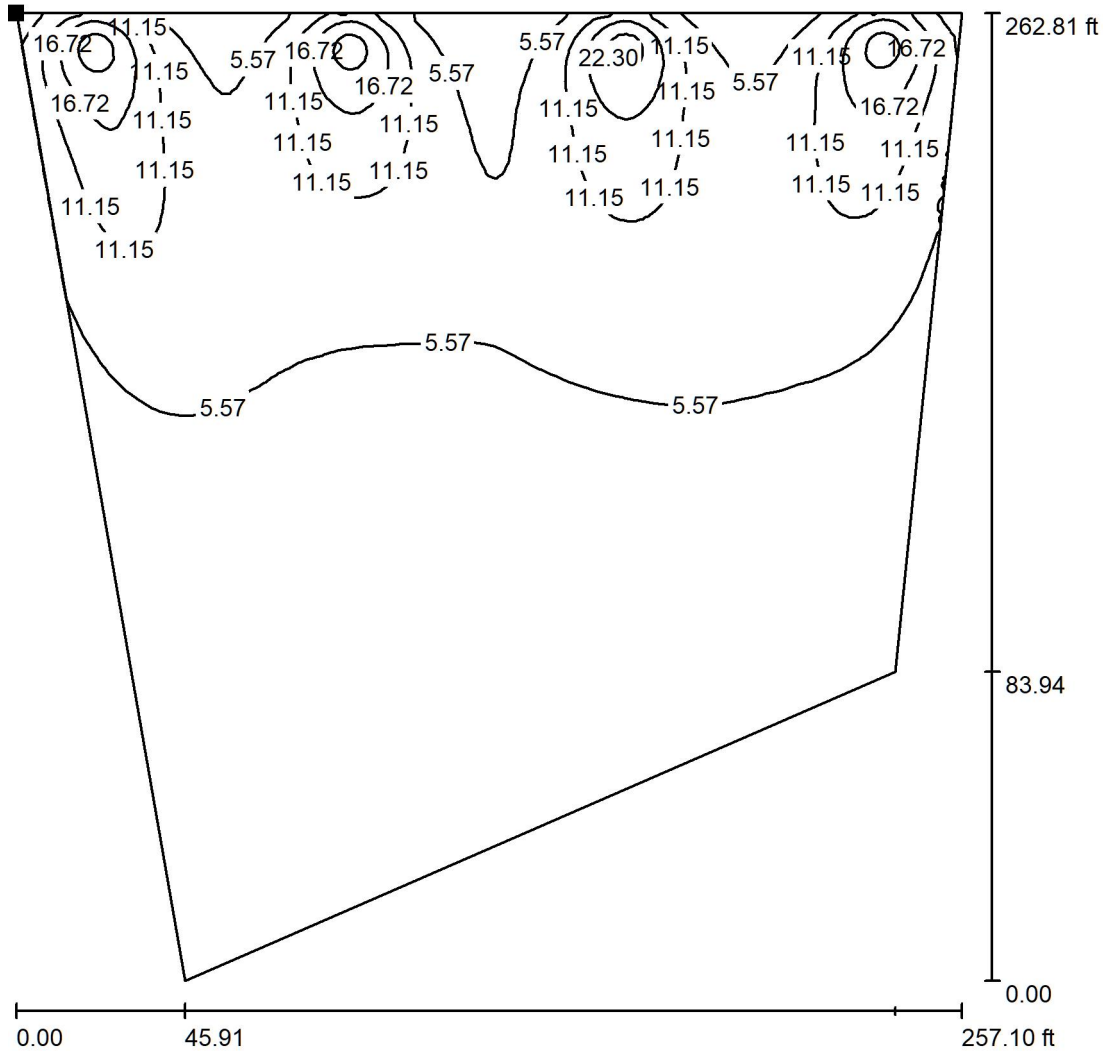


Exterior Scene 1 / False Color Rendering



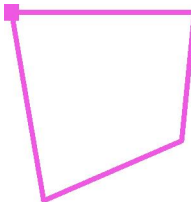
0 1.00 2.00 3.00 4.00 5.00 6.00 7.00 8.00 fc

Exterior Scene 1 / Ground Element 1 / Surface 1 / Isolines (E)



Values in Footcandles, Scale 1 : 627

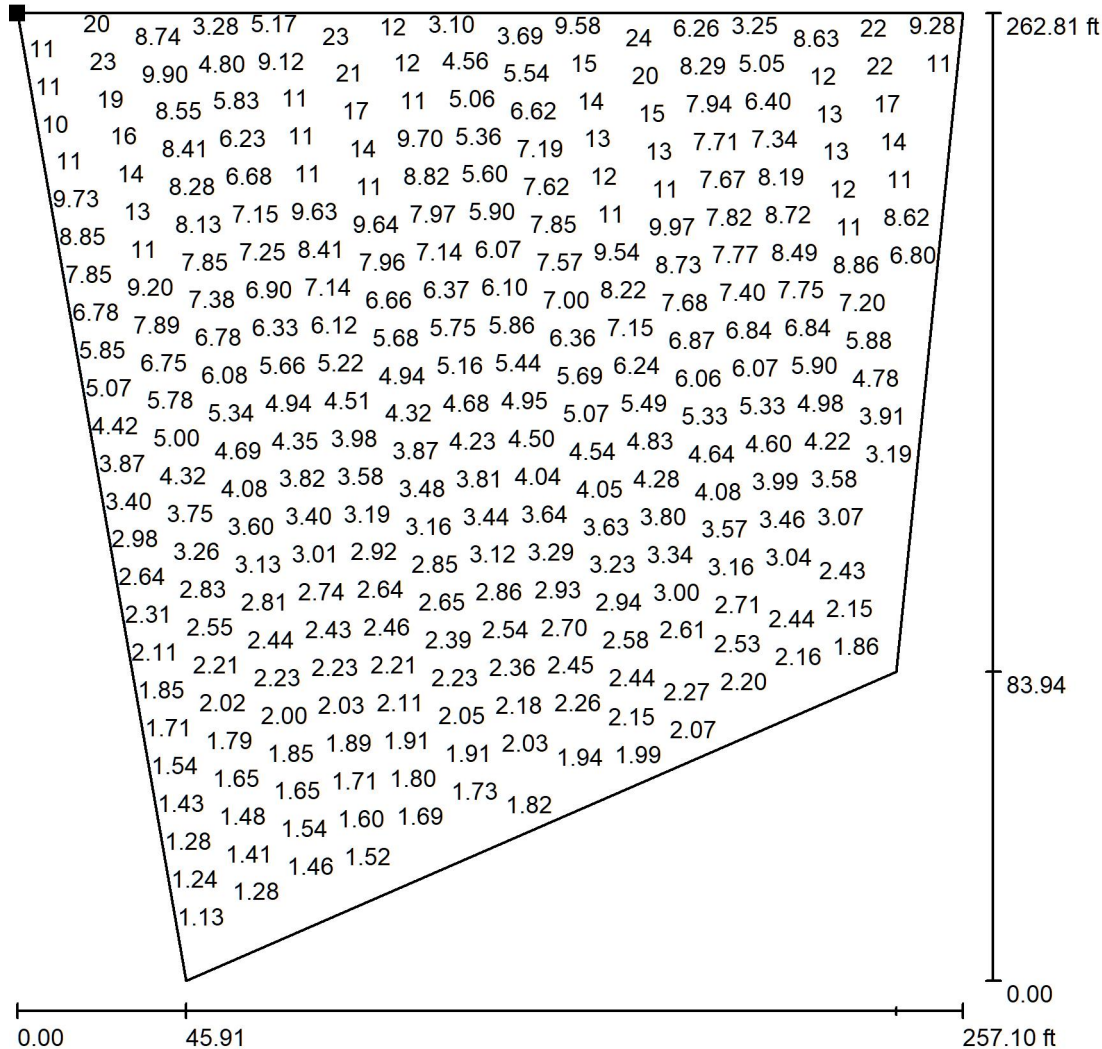
Position of surface in external scene:
 Marked point:
 (-20.692 ft, 71.748 ft, 5.000 ft)



Grid: 128 x 128 Points

E_{av} [fc]	E_{min} [fc]	E_{max} [fc]	u0	E_{min} / E_{max}
5.95	1.05	25	0.176	0.041

Exterior Scene 1 / Ground Element 1 / Surface 1 / Value Chart (E)



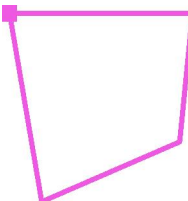
Values in Footcandles, Scale 1 : 627

Not all calculated values could be displayed.

Position of surface in external scene:

Marked point:

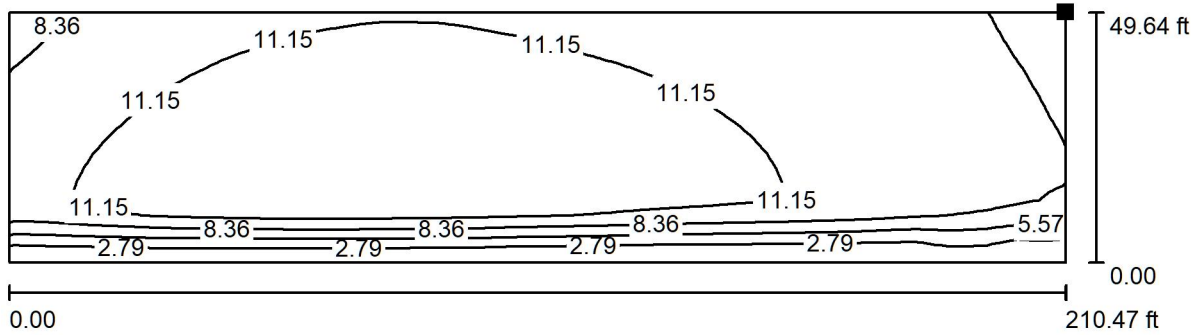
(-20.692 ft, 71.748 ft, 5.000 ft)



Grid: 128 x 128 Points

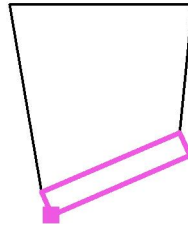
E_{av} [fc]	E_{min} [fc]	E_{max} [fc]	u0	E_{min} / E_{max}
5.95	1.05	25	0.176	0.041

Exterior Scene 1 / Calculation Surface 1 / Isolines (E, Perpendicular)



Values in Footcandles, Scale 1 : 459

Position of surface in external scene:
 Marked point:
 (39.063 ft, -222.900 ft, 35.380 ft)



Grid: 64 x 16 Points

E_{av} [fc]
9.80

E_{min} [fc]
0.31

E_{max} [fc]
13

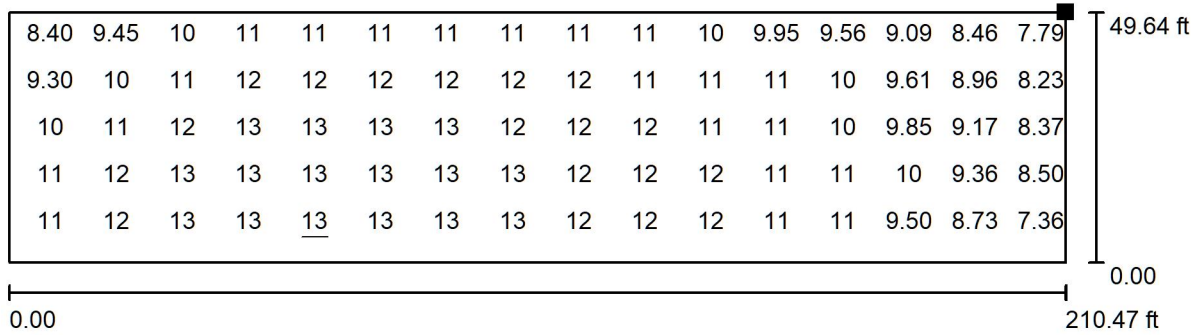
u_0
0.032

E_{min} / E_{max}
0.024

www.LEDLightExpert.com

Operator LEDLightExpert.com
 Telephone
 Fax
 e-Mail

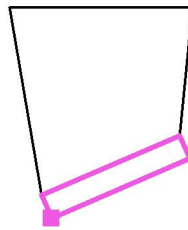
Exterior Scene 1 / Calculation Surface 1 / Value Chart (E, Perpendicular)



Values in Footcandles, Scale 1 : 459

Not all calculated values could be displayed.

Position of surface in external scene:
 Marked point:
 (39.063 ft, -222.900 ft, 35.380 ft)



Grid: 64 x 16 Points

E_{av} [fc]
9.80

E_{min} [fc]
0.31

E_{max} [fc]
13

u_0
0.032

E_{min} / E_{max}
0.024