

PRODUCT DESCRIPTION

This high output UFO builds on its legendary value, now with a sleek & smaller design sporting advanced and improved standard features, including a 110D lens as well as a staggering 140 lumens per watt! It now comes with a wattage selectable feature allowing you to fully control the light output

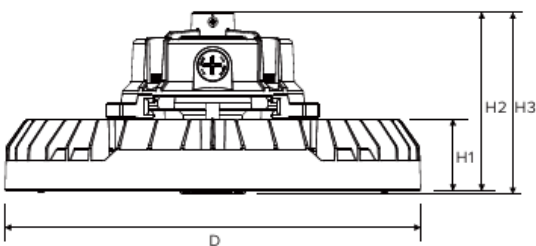


PART #: RG-JL-240W-TT

PRODUCT FEATURES & COMMON USE APPLICATIONS

- UL cUL certificate.
- Wattage and Color Selectable
- Lumileds or Samsung Chip, high CRI.
- Input voltage 120-277VAC.
- Output constant current lever can be adjusted through output cable with 0-10V.
- No UV or IR in the beam.
- Easy to install and operate.
- Energy saving, long lifespan.
- Light is soft and uniform, safe to eyes.
- Instant start, NO flickering, NO humming.
- Green and eco-friendly without mercury.
- Warehouse, factory, and workshops.
- Highway toll station and gas station.
- Exhibition hall.
- Gymnasium and supermarkets, etc

PRODUCT DIMENSIONS



Power	D	H1	H2	H3
150W	Ø240mm 9.45"	50mm 1.97"	127mm 5.00"	129mm 5.08"
240W	Ø300mm 11.81"	50mm 1.97"	127mm 5.00"	129mm 5.08"
AC	Cable length Tin plated bare wire head, Exposed length 0.3m			
Control	Tin plated bare wire head, Exposed length 0.3m			

LEGENDARY USA SUPPORT



US based phone and online customer support



PRODUCT TECHNICAL SPECIFICATIONS

OPTICAL	Input Power (Tolerance : ±10%)	240/200/150 Watts(Wattage Selectable)
	Color Temperature (Color Selectable)	3000K/4000K/5000K(Color Selectable)
	Lumen (Tolerance : -10%)	33600LM/28000LM/21000LM
	Efficacy (Tolerance : -3%)	140LM/W
	CRI	>80
	Diffuser Type	PC Lens(IK08 Shatter Proof)
	Beam Angle (50%) (Tolerance :	110 Degree
	Input Voltage and Frequency	120-277VAC, 50/60Hz
	PF (Tolerance : -3%)	≥0.9
ELECTRICAL	THD (Tolerance : +5%)	≤20%
	Flicker Percent	<5%
	Driver Brand	Rugged Grade Lighting
	Driver Model	Rugged Grade Lighting Driver
	Dimming	0-10V dimming standard
	Optional Accessory	Motion Sensor, Emergency BBU, U Bracket, PC reflector
	LED Brand	Lumileds
	LED Type	SMD2835
	Housing	Die-cast aluminum
	Housing Color	Black
OTHERS	Waterproof Rating	WET (IP65)
	Operating Temperature	-30°C TO 50°C
	Operating Humidity	20% - 90% RH
	Storage Humidity	10% - 95% RH
Warranty	5 years warranty with 24/7 operating hours Luminaire lifetime at	

PRODUCT MOUNTS & ACCESSORIES



PC reflector



Safety rope



U bracket



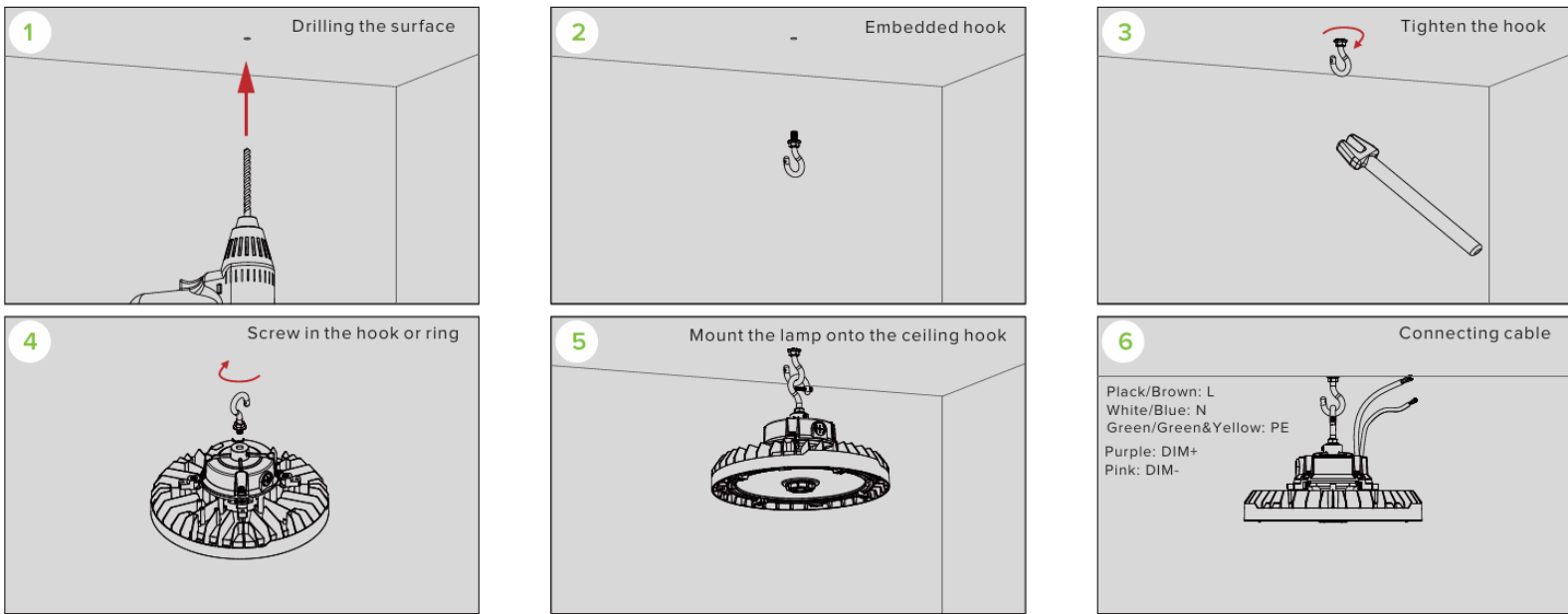
Sensor



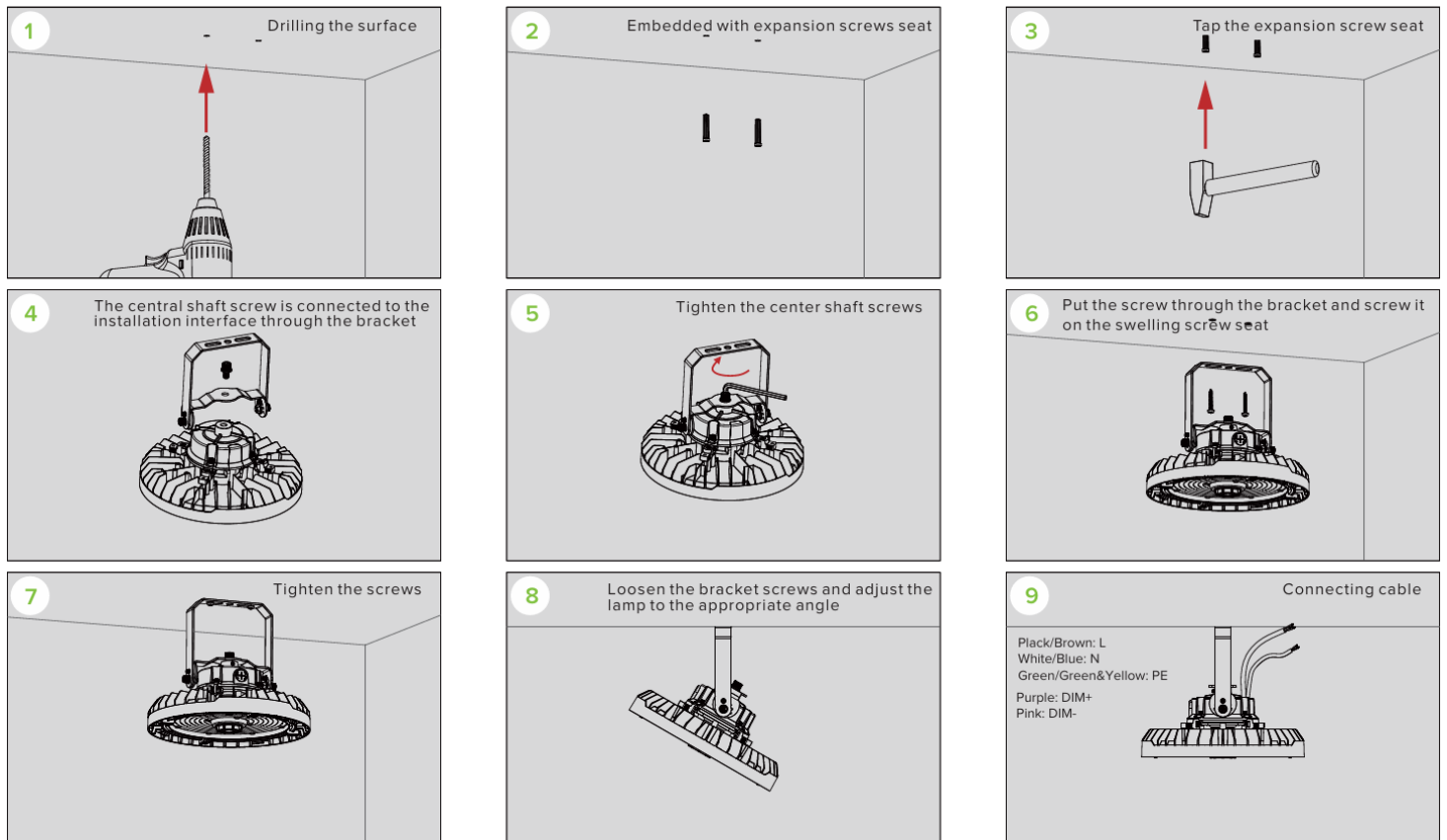
Emergency backup



INSTALLATION INSTRUCTION(HOOK)

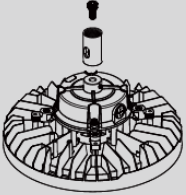


INSTALLATION INSTRUCTION(SURFACE MOUNT)



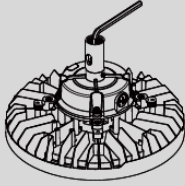
INSTALLATION INSTRUCTION(PPIPE MOUNT)

1 Screw Cross through the converter to connect to the installation interface

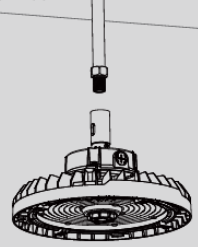


Converter specifications can be selected as G1/2 or G3/4

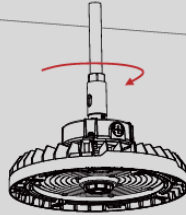
2 Tighten the center shaft screws



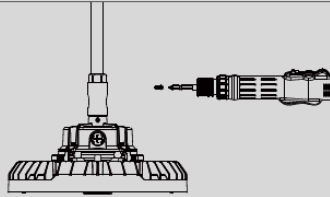
3 Align the lamp converter with the threaded pipe orifice



4 Rotate the lamp until it is tightened

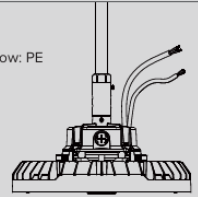


5 Tighten the auxiliary screws on the side of the converter



6 Connecting cable

Plack/Brown: L
White/Blue: N
Green/Green&Yellow: PE
Purple: DIM+
Pink: DIM-



PRODUCT PACKAGING

Power	L /inch	W /inch	H /inch	QTY/ctn	G.W./lbs
150W	10.5	10.5	11.5	2	10lbs
240W	12.8	12.8	13.8	2	14lbs

*Tolerance of Carton Size: ±15 MM, Tolerance of Weight: ±10%.



PRODUCT WARNINGS

- ⚡ Please turn off power before install or change assembly parts.
- ⚡ The input voltage and lamps should be matched, after connecting the power line.
- ⚡ Please make sure the wiring section is insulated.
- ⚡ Professionals must install and disassemble the lamps.
- ⚡ Surge is the number 1 cause of LED light failure. Outdoor lights must have surge at fixture, pole, and breaker.
- ⚡ Surge is the number 1 cause of LED light failure. Indoor lights must have surge at fixture and breaker.

PRODUCT TROUBLESHOOTING

Issue	Check points
Light Flickers	Check all wiring for disconnections, shorts and burnt wiring and connections. Confirm steady input voltage to the light fixture, fluctuating input voltage will harm the LED driver and can lead to premature failure. Lights with photocells can have photocell tag from ambient light or light reflecting at the sensor. Simply cover the photocell completely and see if flickering continues while the photocell is covered. Call Tech Support for help if none of the above solves the issue.
Light does not work at all.	Check all wiring for disconnections, shorts and burnt wiring and connections. Confirm steady input voltage to the light fixture, fluctuating input voltage will harm the LED driver and can lead to premature failure. If input voltage is not in the voltage range of the fixture, you will need to find the source of your input voltage issue. Call Tech Support for help if none of the above solves the issue.

For more technical information, install questions, troubleshooting help or warranty claims, we have a dedicated US Tech and Customer Support Team to help solve any issues you have and can be reached by email or phone. If you need help with any of our products, we are here for you so that you are never in the dark!

**BETTER LIGHTS.
BETTER SUPPORT.**

