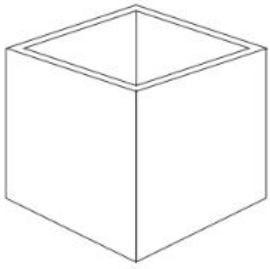
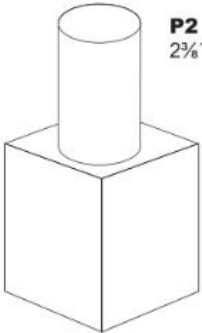


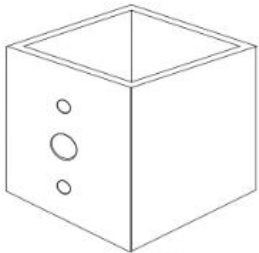
## Pole Specifications



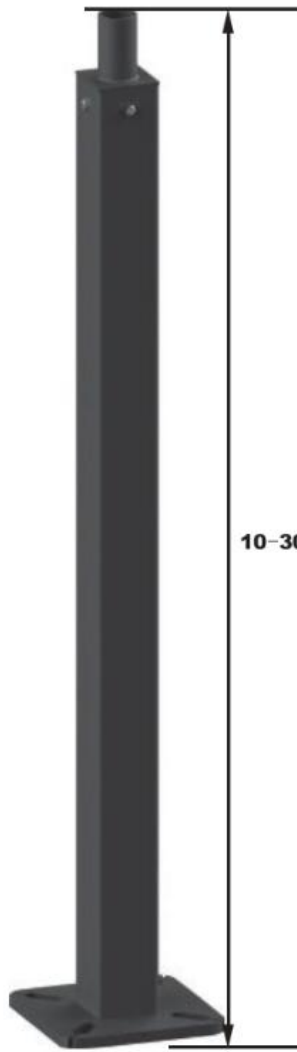
**4" and 5" Square**



**P2**  
2 3/8" x 4" Tenon



**Side Drills:**  
2 at 180°, 4 at 90°



10-30 Feet

### Specifications and Features:

#### Pole Specifications:

Conforms to ASTM-A 500 Grade B: Minimum Yield Strength of 46,000 PSI. Wall Thickness Available in 11 Gauge (.120") or 7 Gauge (.180").

#### Finish:

Textured Architectural Bronze Powdercoat Finish, Baked to Ensure Maximum Paint Adhesion, Hardness and Durability.

#### Anchor Bolts:

Anchor Bolts are Included, Sized Based on Pole Data Charts for the Selected Pole Size.

#### Hand Hole:

Cast Iron Reinforced Hand Hole and Cover with Ground Screw.

#### Base Cover:

Poles are Provided With a Two-Piece Formed Steel Base Cover that is Easily Assembled and Fitted Over Pole Base.

#### Pole Length:

Poles are Available in Standard Lengths as Shown in the Order Matrix. Poles can be Custom Cut to Order. Consult Factory.

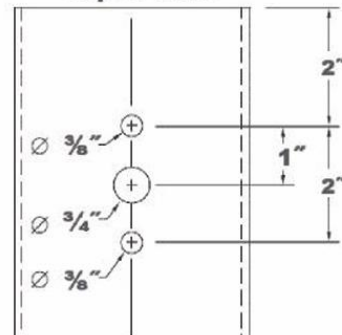
#### Mounting Options:

Standard Length Poles Include 2 3/8" OD Tenon, Side Drilled 4@90 Degrees, Polycarbonate Top Cover and Hole Plugs for Unused Drilling Locations.

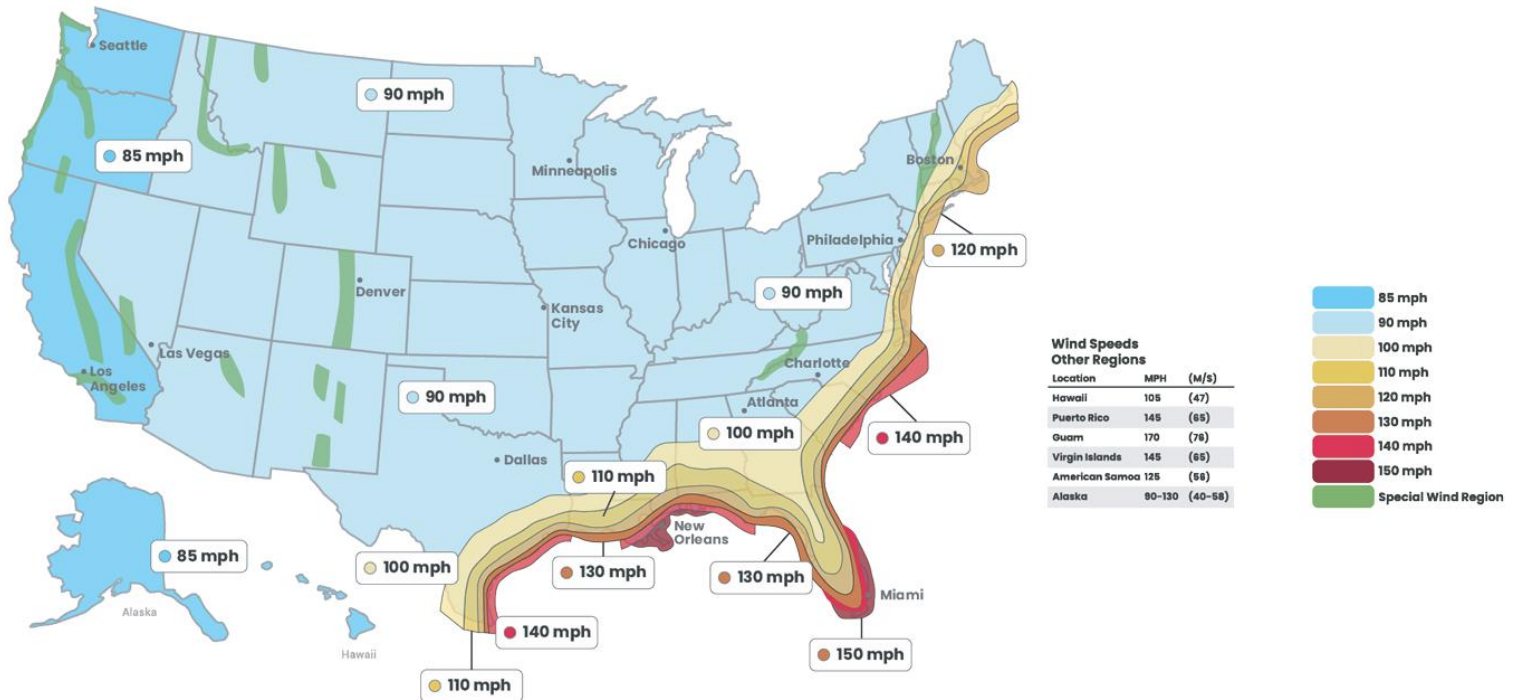
Cut To Order Poles can be Side Drilled for 2@180 Degrees or 4@90 Degrees, Includes Polycarbonate Top Cover and Hole Plugs for Unused Drilling Locations.

Cut To Order Poles May Also Be Ordered With 2 3/8" OD Tenons for Use With Post Top Decorative Luminaires, Flood/Area Slip Fitter Fixtures, or Any of a Wide Variety of Pole Top Mounting Accessories.

#### Top of Pole



## WIND LOADING & EPA DATA



ASCE 7-05 WIND MAP EPA LOAD RATING - 3 SECOND GUST WIND

Cat. No.	Weight (lbs)	Total Luminaire Weight (lbs)	90 MPH (ft <sup>2</sup> )	100 MPH (ft <sup>2</sup> )	110 MPH (ft <sup>2</sup> )	120 MPH (ft <sup>2</sup> )	130 MPH (ft <sup>2</sup> )	140 MPH (ft <sup>2</sup> )
KL-F-10FT-4IN-11GA	95	320	25.2	20.0	18.6	15.3	12.7	10.6
KL-F-15FT-4IN-11GA	130	245	15.5	11.9	10.9	8.6	6.8	5.4
KL-F-20FT-4IN-11GA	160	200	9.1	6.5	5.8	4.2	2.9	1.9
KL-F-25FT-4IN-11GA	195	200	4.7	2.8	2.2	1.0	NR	NR
KL-F-30FT-5IN-7GA	407	215	11.7	8.0	7.0	4.7	2.9	1.5
KL-F-30FT-5IN-7GA	285	200	3.4	1.1	NR	NR	NR	NR

We provide this information as a guide only and assume no liability for its use. Allowable pole EPA for job site wind conditions must be equal to or greater than fixture mount EPA. Responsibility lies with the specifier for the correct pole selection based on A.N.S.I. wind map and job location.

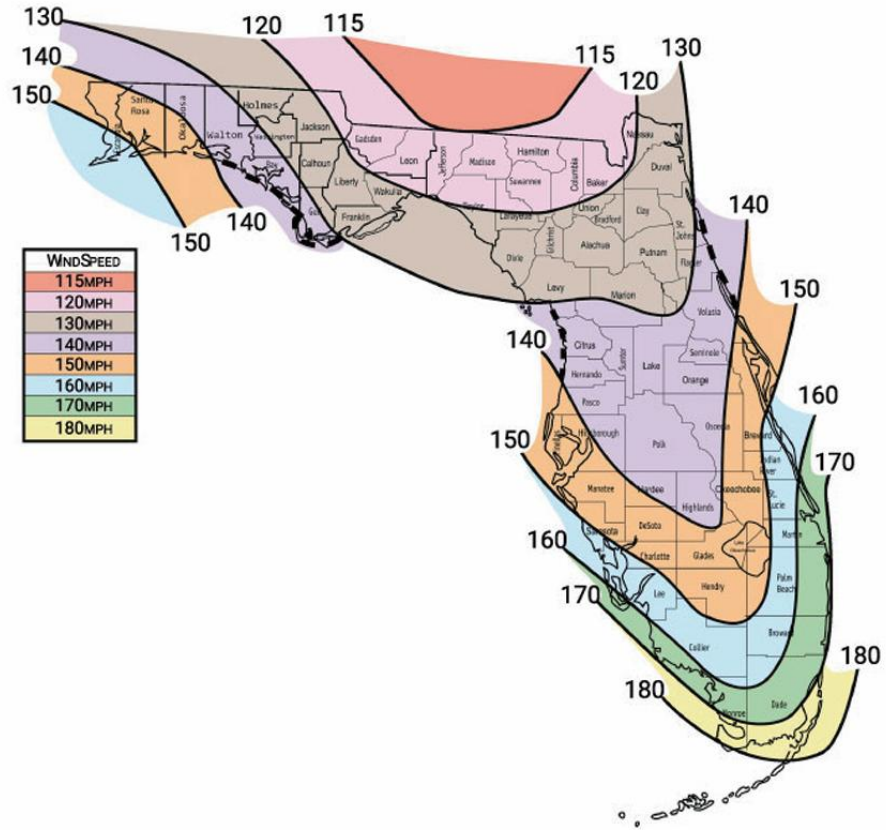
### NOTES

1. Maximum EPA (Effective Projected Area) are based on AASHTO 2013 (90-150MPH) and ASCE 7-05
2. Maximum EPA (Effective Projected Area) and weight values are based on side mounted fixtures only. Consult factory on loading criteria for pole top mounted luminaires and/or brackets. Variations from sizes above are available upon inquiry at the factory. Satisfactory performance of poles is dependent upon the pole being properly attached to a supporting foundation of adequate design.
3. Structure weight is a nominal value which includes the pole shaft and base plate only.
4. Variations from sizes above are available upon inquiry at the factory.
5. Satisfactory performance of poles is dependent upon the pole being properly attached to a supporting foundation of adequate design.



## WIND LOADING & EPA DATA

### WIND MAP FOR FLORIDA



### FBC 2023 / ASCE 7-10 WIND MAP EPA LOAD RATING - ULTIMATE 3 SECOND GUST WIND

Cat. No.	Weight (lbs)	Total Luminaire Weight (lbs)	120 MPH (ft <sup>2</sup> )	130 MPH (ft <sup>2</sup> )	140 MPH (ft <sup>2</sup> )	150 MPH (ft <sup>2</sup> )	160 MPH (ft <sup>2</sup> )	170 MPH (ft <sup>2</sup> )	180 MPH (ft <sup>2</sup> )
10FT	95	300	21.4	17.9	15.0	12.8	10.9	9.3	8.1
15FT	130	295	12.3	9.8	7.9	6.4	5.1	4.0	3.2
20FT	160	165	6.9	5.1	3.7	2.5	1.6	0.8	NR
30FT	407	207	8.5	5.9	3.8	2.2	0.8	NR	NR

We provides this information as a guide only and assumes no liability for its use. Allowable pole EPA for job site wind conditions must be equal to or greater than fixture mount EPA. Responsibility lies with the specifier for the correct pole selection based on A.N.S.I. wind map and job location.

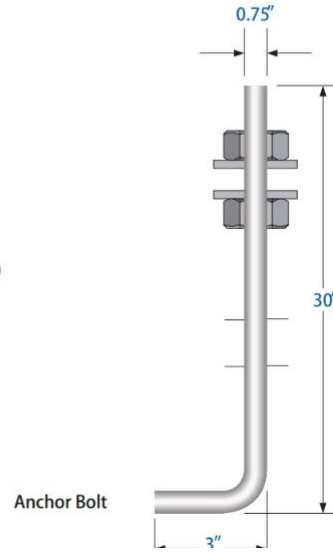
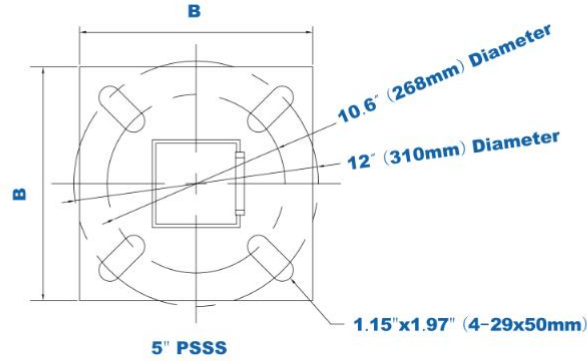
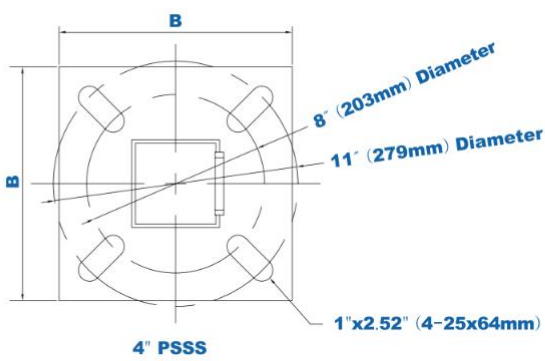
#### NOTES

1. Values are ultimate design 3-second gust wind speeds in miles per hour at 33 ft. above ground for Exposure C category.
2. Linear interpolation between contours is permitted.
3. Islands and coastal areas outside the last contour shall use the last wind speed contour of the coastal area.
4. Mountainous terrain, gorges, ocean promontories, and special wind regions shall be examined for unusual wind conditions.
5. Wind speeds correspond to approximately a 7% probability of exceedance in 50 years (Annual Exceedance Probability = 0.00143, MRI = 700 years).

Figure 1609.3(1) Ultimate Design Wind Speeds, VULT, For Risk Category II Buildings And Other Structures

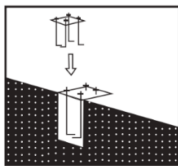
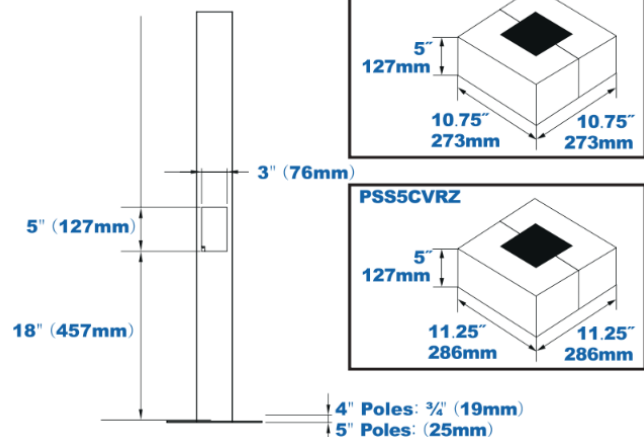
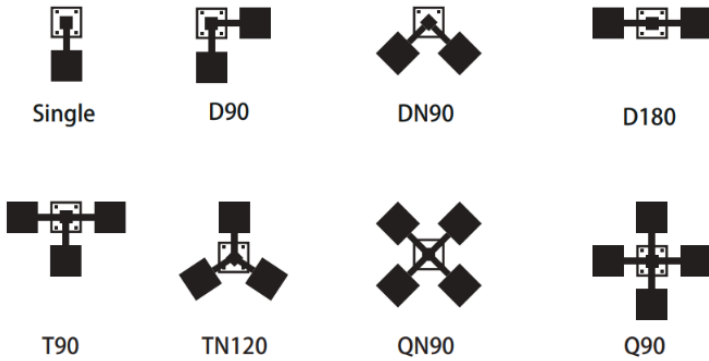


## BASE DIMENSIONS AND ANCHORING DATA

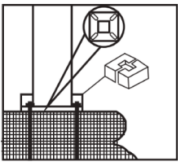


Shaft Base Size	Bolt Circle A	Base Size B	Base Thickness C	Bolt Projection	Anchor Bolt Size
4" PSSS 11 Gauge	8"-11" (203-279mm)	10.5" (266mm)	3/4"	4"	M20 x 27 1/2"
4" PSSS 7 Gauge	8"-11" (203-279mm)	10.5" (266mm)	3/4"	4"	M22 x 33"
5" PSSS 7 Gauge	10.6"-12" (268-310mm)	11" (280mm)	1"	4"	M22 x 33"

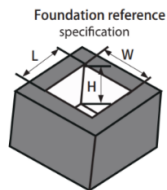
### Fixture Configurations:



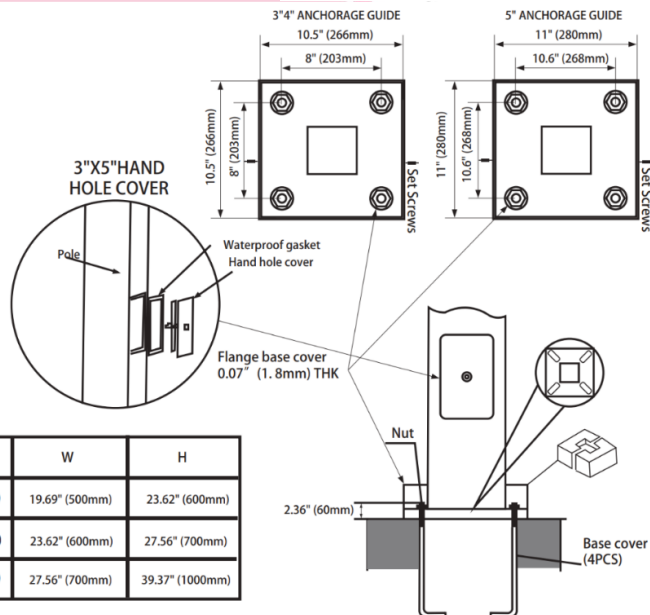
1. Dig a hole in the installation position of the lamp pole. Fixed four fastener fittings according to the hole position of lamp pole and poured with cement concrete. (as shown in the figure)



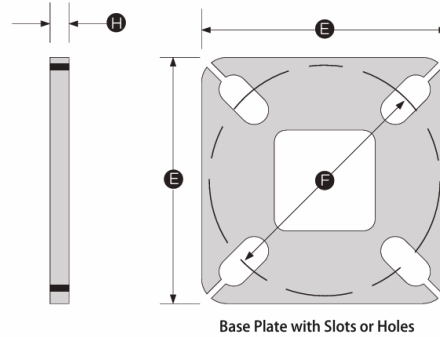
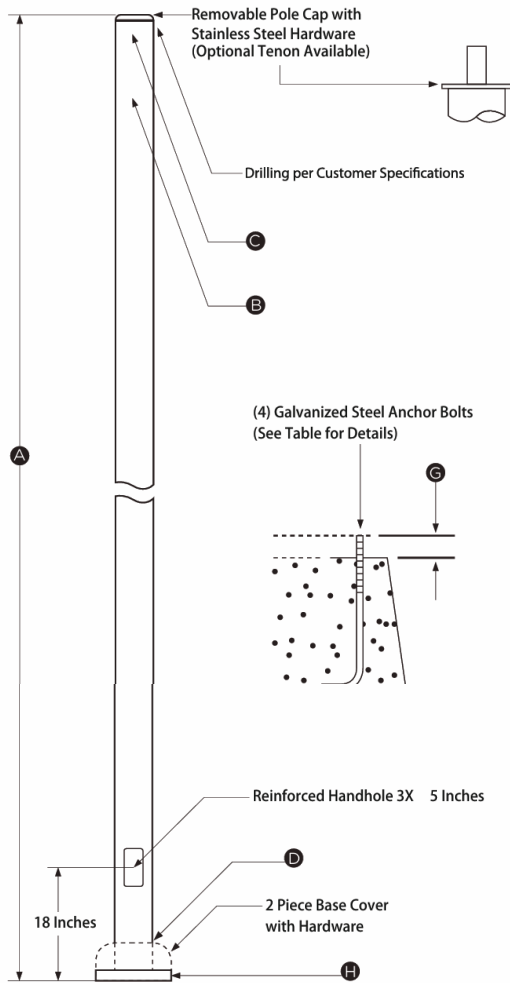
2. Align the four bolts of the lamp pole to the mounting hole of the lamp pole. After fixing the lamp pole with a nut, install a protective cover at the lower end of the lamp pole. (as shown in the figure) the hole position of lamp pole and poured with cement concrete. (as shown in the figure)



Specifications	L	W	H
10-15FT	19.69" (500mm)	19.69" (500mm)	23.62" (600mm)
20-25FT	23.62" (600mm)	23.62" (600mm)	27.56" (700mm)
30FT	27.56" (700mm)	27.56" (700mm)	39.37" (1000mm)



## 15FT 11 GAUGE POLE DIMENSIONS

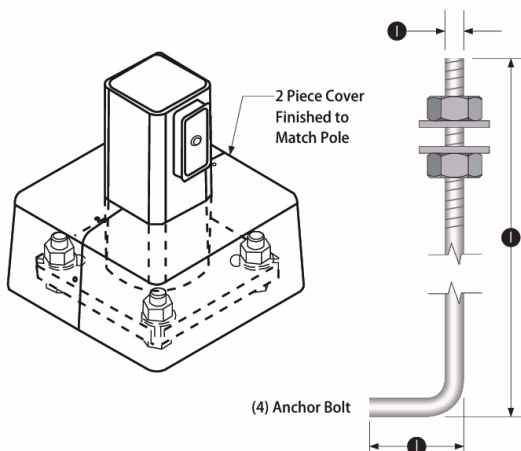


Specification Table	
Nutting Height (ft.)	A 15
Gauge	B 11
Top Width (in.)	C 4
Butt Width (in.)	D 4
Base Width (in.)	E 10.5
Bolt Circle (in.)	F 9.5
Bolt Projection (in.)	G 3.75
Base Thickness (in.)	H 0.75
Anchor Bolt Size (in.)	I 0.75 × 17 × 3
Bolt Circle Range (in.)	- 8-11
Pole Weight (lbs.)	- 113

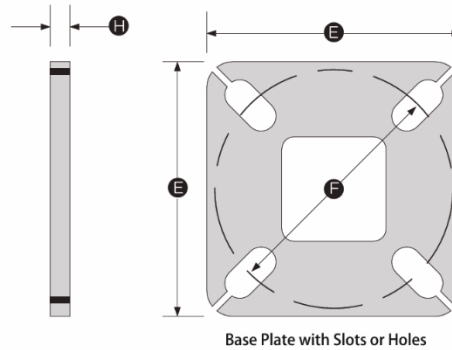
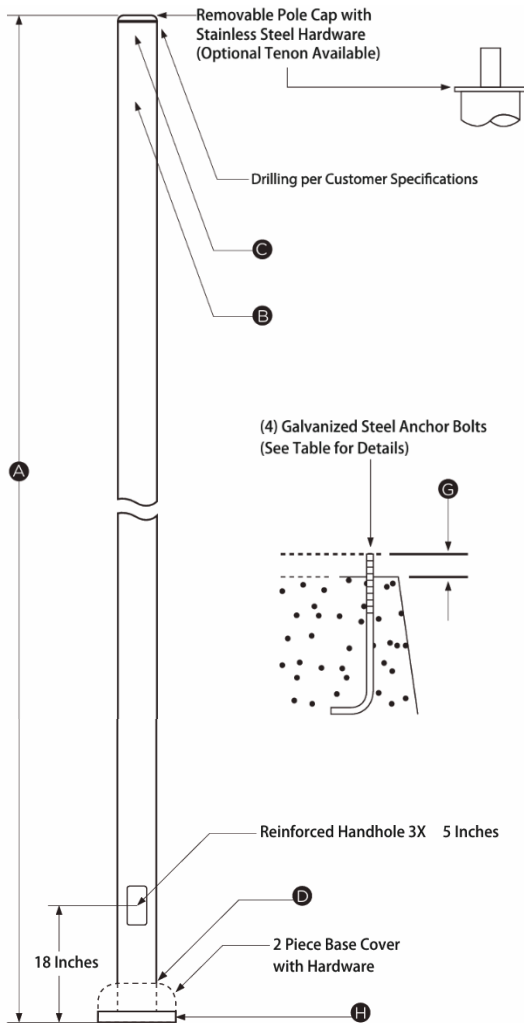
Maximum EPA with 1.3 Gust Factor:	
90 mph:	12.5 Square Feet
100 mph:	9.75 Square Feet
110 mph:	7.75 Square Feet
120 mph:	6.2 Square Feet

### Product Description

- Pole Top Options:** A removable plastic pole cap is provided if the pole is drilled for attaching light fixtures. The drill pattern and drill orientation needs to be provided by the customer unless Energy Light fixtures are used for the project. If a tenon option is selected, a steel tenon will be provided. A 23/8 inch diameter tenon with a 4 inch length is standard; however, the customer needs to confirm the appropriate tenon size required for the project.
- Pole Shaft:** Commercial quality welded steel tubing of 1 piece construction with a minimum yield strength of 55,000 psi is used to fabricate the pole shaft.
- Handhole:** 3 X 5 inches tall reinforced handhole is provided at 18 inches from the base. A cover with a single screw to secure the latch mechanism is also provided.
- Base Cover:** A 2 piece metal base cover is provided along with hardware to securely attach the 2 pieces together after pole installation.
- Anchor Bolts:** A set of 4 galvanized steel anchor bolts is provided with each pole assembly. Each bolt includes 2 nuts and 2 washers. A portion of the anchor bolt is threaded for securing and leveling the pole with the provided nuts and washers. An actual size paper anchor bolt template is included.
- Color:** Dark Bronze ( other color optional)



## 20FT 11 GAUGE POLE DIMENSIONS

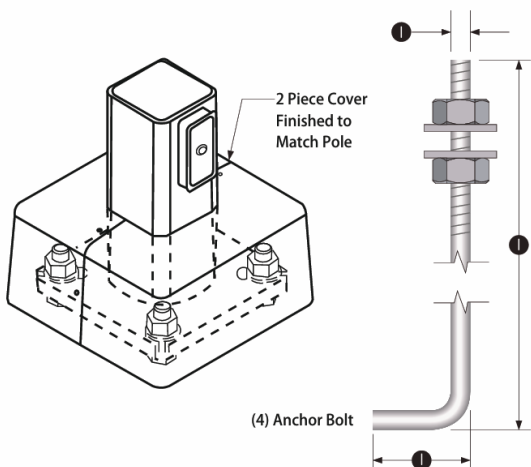


Specification Table	
Nutting Height (ft.)	A 20
Gauge	B 11
Top Width (in.)	C 4
Butt Width (in.)	D 4
Base Width (in.)	E 10.5
Bolt Circle (in.)	F 9.5
Bolt Projection (in.)	G 3.75
Base Thickness (in.)	H 0.75
Anchor Bolt Size (in.)	I 0.75 × 17 × 3
Bolt Circle Range (in.)	- 8-11
Pole Weight (lbs.)	- 138

Maximum EPA with 1.3 Gust Factor:	
90 mph:	8 Square Feet
100 mph:	5.7 Square Feet
110 mph:	4.3 Square Feet
120 mph:	3.1 Square Feet

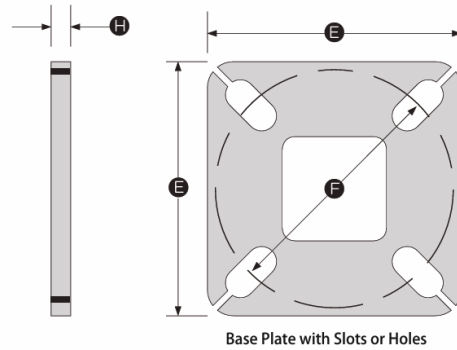
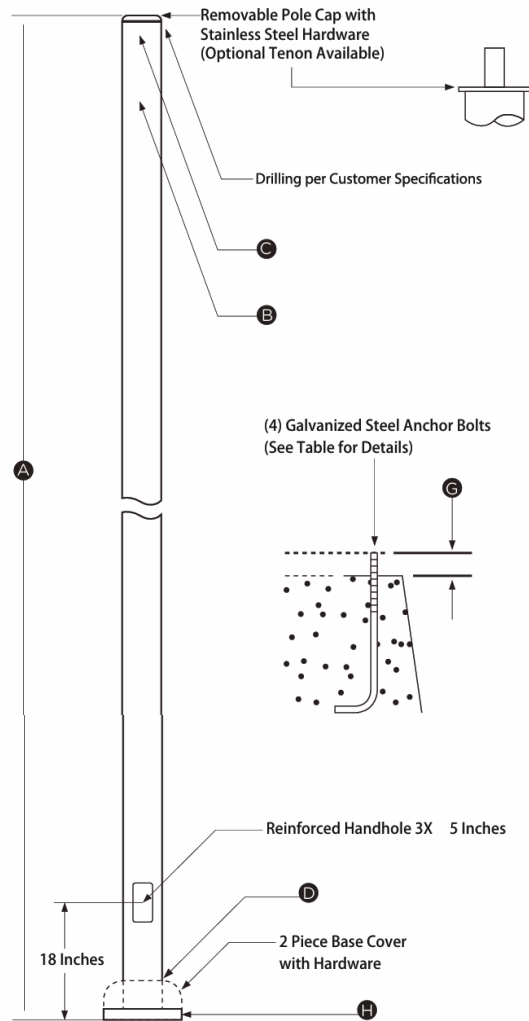
### Product Description

- Pole Top Options:** A removable plastic pole cap is provided if the pole is drilled for attaching light fixtures. The drill pattern and drill orientation needs to be provided by the customer unless Energy Light fixtures are used for the project. If a tenon option is selected, a steel tenon will be provided. A 23/8 inch diameter tenon with a 4 inch length is standard; however, the customer needs to confirm the appropriate tenon size required for the project.
- Pole Shaft:** Commercial quality welded steel tubing of 1 piece construction with a minimum yield strength of 55,000 psi is used to fabricate the pole shaft.
- Handhole:** 3 X 5 inches tall reinforced handhole is provided at 18 inches from the base. A cover with a single screw to secure the latch mechanism is also provided.
- Base Cover:** A 2 piece metal base cover is provided along with hardware to securely attach the 2 pieces together after pole installation.
- Anchor Bolts:** A set of 4 galvanized steel anchor bolts is provided with each pole assembly. Each bolt includes 2 nuts and 2 washers. A portion of the anchor bolt is threaded for securing and leveling the pole with the provided nuts and washers. An actual size paper anchor bolt template is included.
- Color:** Dark Bronze ( other color optional)





### 25FT 11 GAUGE POLE DIMENSIONS

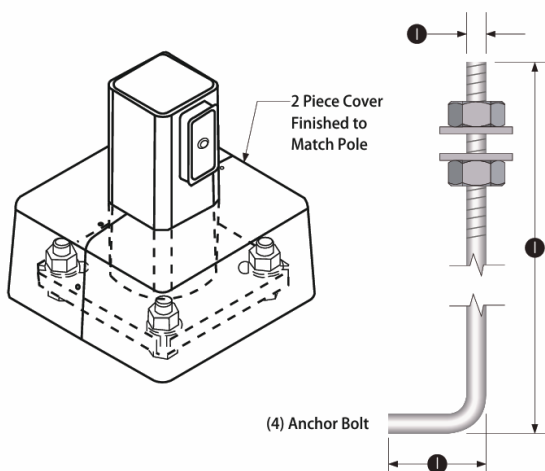


Specification Table	
Nutting Height (ft.)	A 25
Gauge	B 11
Top Width (in.)	C 4
Butt Width (in.)	D 4
Base Width (in.)	E 10.5
Bolt Circle (in.)	F 9.5
Bolt Projection (in.)	G 3.75
Base Thickness (in.)	H 0.75
Anchor Bolt Size (in.)	I 0.75 × 30 × 3
Bolt Circle Range (in.)	- 8-11
Pole Weight (lbs.)	- 240

Maximum EPA with 1.3 Gust Factor:	
90 mph:	8.3 Square Feet
100 mph:	6 Square Feet
110 mph:	4.25 Square Feet
120 mph:	3 Square Feet

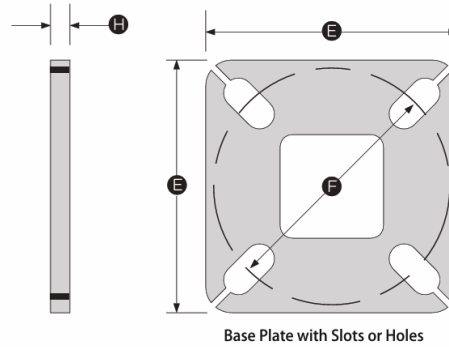
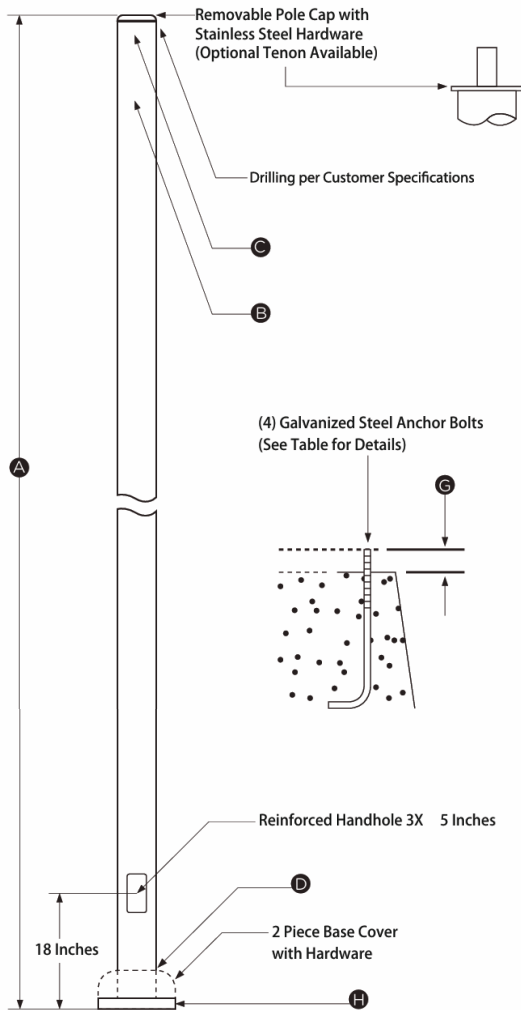
### Product Description

- Pole Top Options:** A removable plastic pole cap is provided if the pole is drilled for attaching light fixtures. The drill pattern and drill orientation needs to be provided by the customer unless Energy Light fixtures are used for the project. If a tenon option is selected, a steel tenon will be provided. A 23/8 inch diameter tenon with a 4 inch length is standard; however, the customer needs to confirm the appropriate tenon size required for the project.
- Pole Shaft:** Commercial quality welded steel tubing of 1 piece construction with a minimum yield strength of 55,000 psi is used to fabricate the pole shaft.
- Handhole:** 3 X 5 inches tall reinforced handhole is provided at 18 inches from the base. A cover with a single screw to secure the latch mechanism is also provided.
- Base Cover:** A 2 piece metal base cover is provided along with hardware to securely attach the 2 pieces together after pole installation.
- Anchor Bolts:** A set of 4 galvanized steel anchor bolts is provided with each pole assembly. Each bolt includes 2 nuts and 2 washers. A portion of the anchor bolt is threaded for securing and leveling the pole with the provided nuts and washers. An actual size paper anchor bolt template is included.
- Color:** Dark Bronze ( other color optional)





### 30FT 7 GAUGE POLE DIMENSIONS

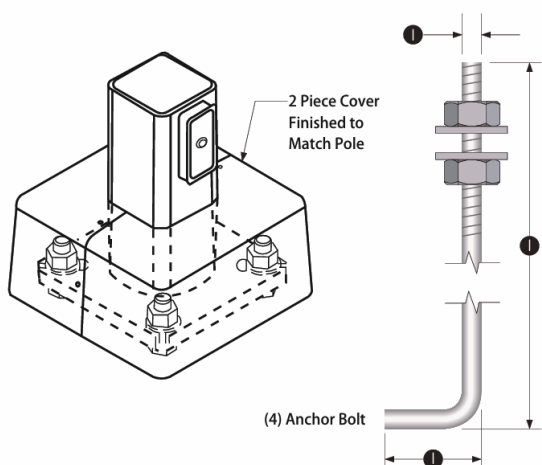


Specification Table	
Nutting Height (ft.)	A 30
Gauge	B 7
Top Width (in.)	C 5
Butt Width (in.)	D 5
Base Width (in.)	E 11
Bolt Circle (in.)	F 11.3
Bolt Projection (in.)	G 4.875
Base Thickness (in.)	H 1
Anchor Bolt Size (in.)	I 1X36X4
Bolt Circle Range (in.)	- 10.6-12

Maximum EPA with 1.3 Gust Factor:	
90 mph:	10.35 Square Feet
100 mph:	7.25 Square Feet
110 mph:	4.9 Square Feet
120 mph:	3.25 Square Feet

#### Product Description

- Pole Top Options:** A removable plastic pole cap is provided if the pole is drilled for attaching light fixtures. The drill pattern and drill orientation needs to be provided by the customer unless Energy Light fixtures are used for the project. If a tenon option is selected, a steel tenon will be provided. A 23/8 inch diameter tenon with a 4 inch length is standard; however, the customer needs to confirm the appropriate tenon size required for the project.
- Pole Shaft:** Commercial quality welded steel tubing of 1 piece construction with a minimum yield strength of 55,000 psi is used to fabricate the pole shaft.
- Handhole:** 3 X 5 inches tall reinforced handhole is provided at 18 inches from the base. A cover with a single screw to secure the latch mechanism is also provided.
- Base Cover:** A 2 piece metal base cover is provided along with hardware to securely attach the 2 pieces together after pole installation.
- Anchor Bolts:** A set of 4 galvanized steel anchor bolts is provided with each pole assembly. Each bolt includes 2 nuts and 2 washers. A portion of the anchor bolt is threaded for securing and leveling the pole with the provided nuts and washers. An actual size paper anchor bolt template is included.
- Color:** Dark Bronze ( other color optional)



## PRODUCT WARNINGS

- ⚡ Please turn off power before install or change assembly parts.
- ⚡ The input voltage and lamps should be matched, after connecting the power line.
- ⚡ Please make sure the wiring section is insulated.
- ⚡ Professionals must install and disassemble the lamps.
- ⚡ Surge is the number 1 cause of LED light failure. Outdoor lights must have surge at fixture, pole, and breaker.
- ⚡ Surge is the number 1 cause of LED light failure. Indoor lights must have surge at fixture and breaker.

## PRODUCT TROUBLESHOOTING

Issue	Check points
Light Flickers	Check all wiring for disconnections, shorts and burnt wiring and connections. Confirm steady input voltage to the light fixture, fluctuating input voltage will harm the LED driver and can lead to premature failure. Lights with photocells can have photocell tag from ambient light or light reflecting at the sensor. Simply cover the photocell completely and see if flickering continues while the photocell is covered. Call Tech Support for help if none of the above solves the issue.
Light does not work at all.	Check all wiring for disconnections, shorts and burnt wiring and connections. Confirm steady input voltage to the light fixture, fluctuating input voltage will harm the LED driver and can lead to premature failure. If input voltage is not in the voltage range of the fixture, you will need to find the source of your input voltage issue. Call Tech Support for help if none of the above solves the issue.

For more technical information, install questions, troubleshooting help or warranty claims, we have a dedicated US Tech and Customer Support Team to help solve any issues you have and can be reached by email or phone. If you need help with any of our products, we are here for you so that you are never in the dark!

# BETTER LIGHTS. BETTER SUPPORT.

