



### PRODUCT DESCRIPTION

THE NEW COBALT PRO LED FLOOD LIGHT, WITH A SLIM DESIGN AND A HIGHER CONVERSION EFFICIENCY. MONO-CRYSTALLINE PHOTOVOLTAIC SOLAR PANEL THAT CAUSE EFFICIENT CHARGING. ALLOWS US TO MEET NEW AND BETTER STANDARDS.

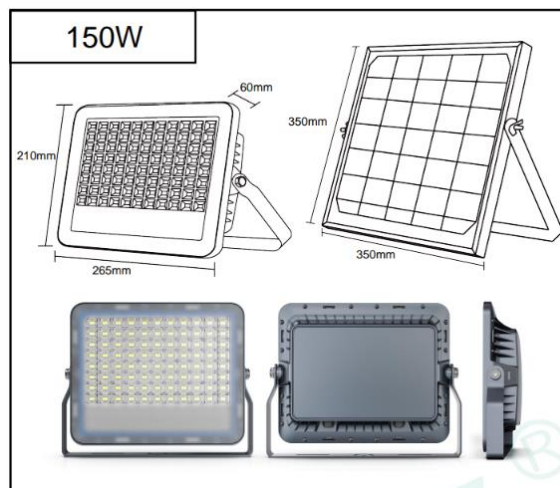


Part #: RGL-COBALT-PRO-150W

### PRODUCT FEATURES & COMMON USE APPLICATIONS

- ✓ Nice design with lighter weight, easier installation
- ✓ SAA/C-Tick/CE/CB/CCC/ROHS certification
- ✓ The controller has dimming and timer options
- ✓ Battery life is longer with an 8 hour charge that will last 3 days
- ✓ Easy to install and operate
- ✓ Energy saving, long lifespan
- ✓ Instant start, NO flickering, NO humming
- ✓ Green and eco-friendly without mercury
- ✓ Adjustable Beam Angle
- ✓ Street Lighting
- ✓ Outdoor landscaping light
- ✓ Building, The Hotel.
- ✓ Parking Lot

### PRODUCT DIMENSIONS



### LEGENDARY USA SUPPORT



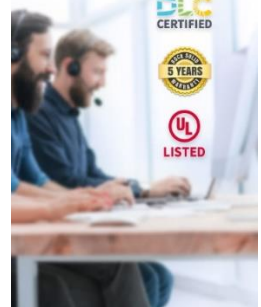
US based phone and online customer support

DLC CERTIFIED

5 YEARS WARRANTY



LISTED



## PRODUCT TECHNICAL SPECIFICATIONS

<b>OPTICAL</b>	Input Power (Tolerance: ±10%)	150W
	Color Temperature	3CCT: 3000K/4000K/5000K
	Lumen (Tolerance: -10%)	7500LM
	Battery	15Ah 3.2V
	Solar Panel	20W 6V 350*350*17
	CRI	Ra70
	Color Consistency	< 6 Steps (or < 6 SDCM)
	Distribution Pattern	NA
	Beam Angle (50%) (Tolerance: ±15%)	85*145°
	Battery Capacity	230WH
	PF (Tolerance: -3%)	≥0.95
<b>ELECTRICAL</b>	THD (Tolerance: +5%)	≤20%
	Flicker Percent	<70%
	Driver Brand	RG
	Driver Surge protection	L/N-PE: 2.5kV, L-N:2.5kV
	Dimming	None
	Optional Accessory	None
	LED Brand	Lumileds
	LED Type	SMD2835
LED QTY	176	
<b>MATERIALS</b>	Housing	Aluminum Alloy
	Housing Color	White
	Waterproof Rating	Wet(IP65)
	Operating Temperature	0°C TO 50°C
	Storage Temperature	0°C TO 80°C
	Operating Humidity	20% - 90% RH
	Storage Humidity	10% - 95% RH
<b>OTHERS</b>	Warranty	1 year warranty with 24/7 operating hours Luminaire lifetime at 25°C.
	Charge Time	6-8Hrs(Fullpower)

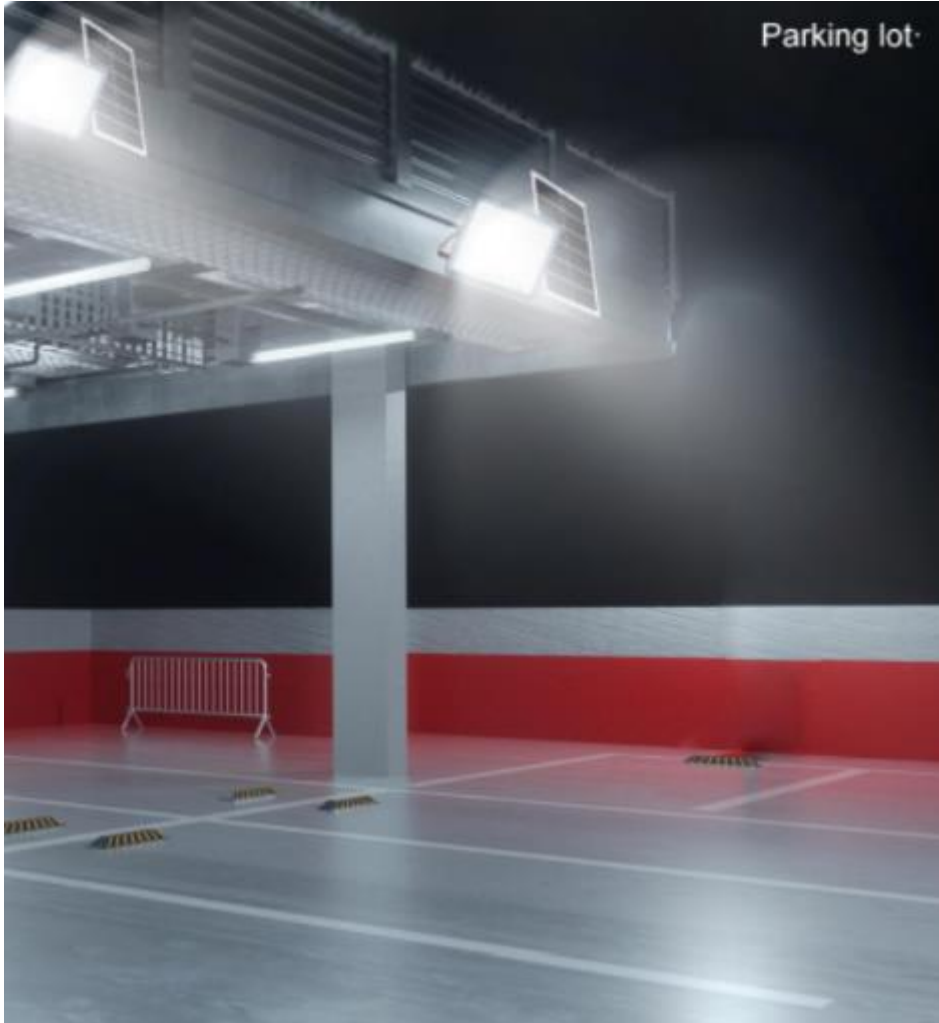
## PRODUCT ACCESORIES



Remote control



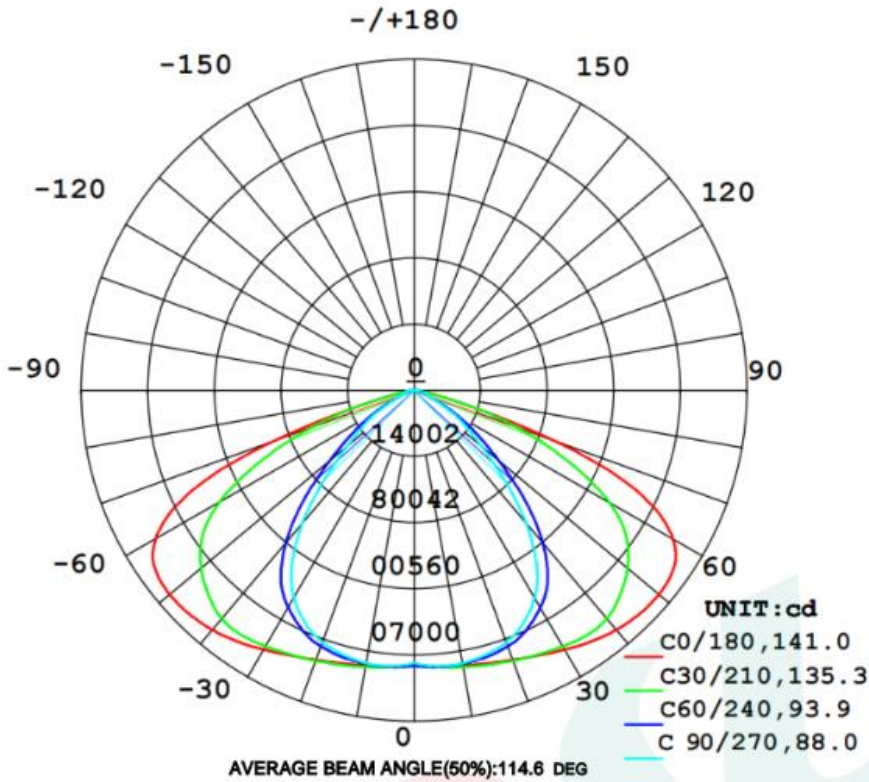
PRODUCT IMAGES & FEATURES





### PHOTOMETRICS

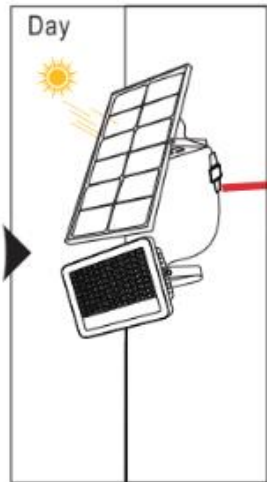
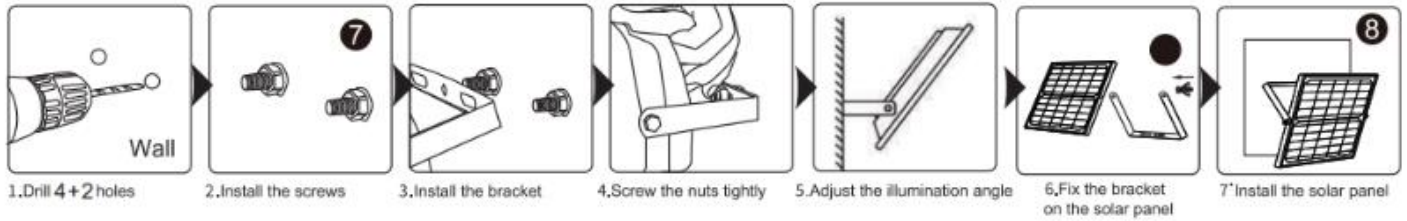
LUMINOUS INTENSITY DISTRIBUTION DIAGRAM



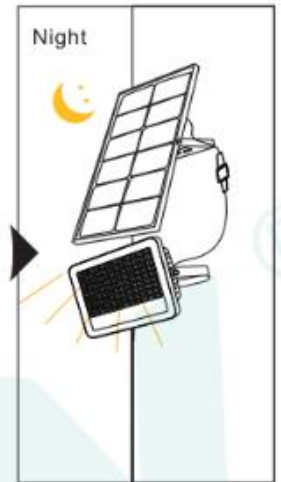
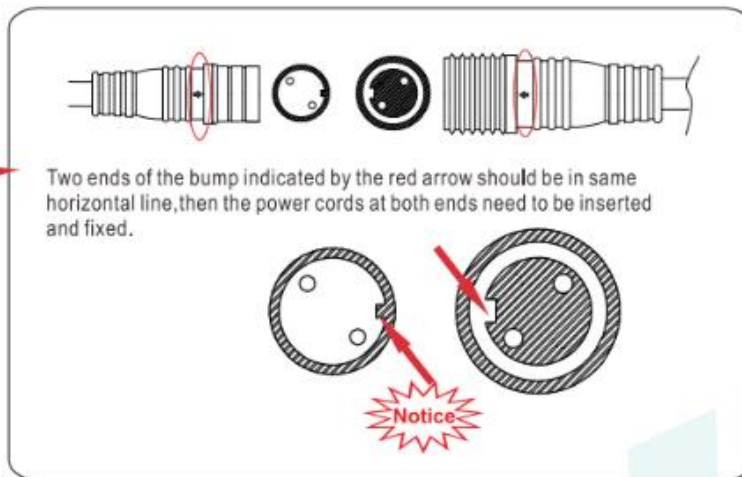
PC optical lens with high light transmission efficiency is adopted to ensure a more wider illumination range for you.



## PRODUCT INSTALLATION



8. Adjust the panel to the direction with adequate sunlight



9. Installation is finished, it will light up at night

### HOW THE SOLAR LIGHT WORKS:

During the daytime, the solar panel converts sun power into electricity and charging the battery. At night, the light turn on automatically using the electricity stored in the battery.

### PRECAUTION:

Please install in a sunny place where it can receive direct sunlight for at least 6~8 hours each day , avoid installation near a tree which creates overcast on solar panel, or it will affects the charging effect. Any shadow or overcast on solar panel during the day impact the effective charging of battery. Then the brightness will be changed when battery power is low. The selected locations should not be near lights, otherwise maybe cause the solar light to turn off prematurely.

### ATTENTION FOR THE USE OF THE FIRST TIME:

When you get the solar light, the battery is only 50%-60% full charge because of shipping. So we suggest you please open the switch and then place the solar light in a location where it can receive a full 6-8 hours of sun power to recharging the battery to reach maximum capacity, and then to install the solar light where you want.

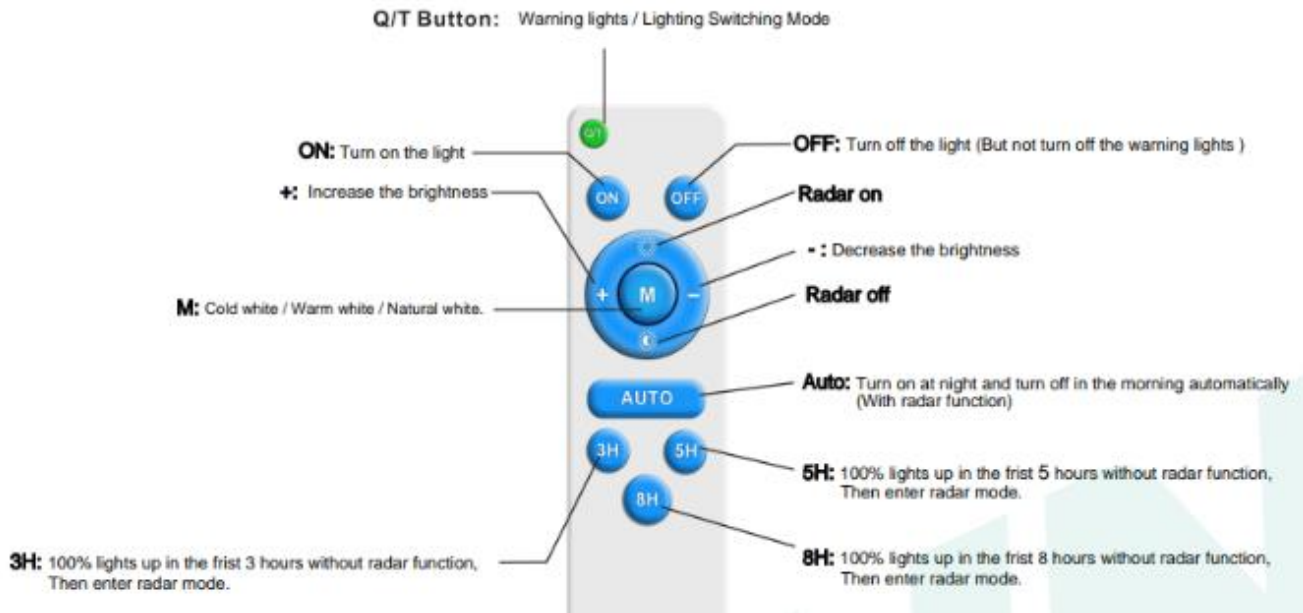


Activate Win.



## REMOTE DESCRIPTION

### Remote:



### Remark:

- 1.Radar mode:100% brightness when people come around  
20% brightness when people leave
- 2.Green indicator lights: 4 level Battery capacity, each one level means 25% battery capacity.
- 3.Red & Blue indicator lights: Alternate flashing, warning function.



## PRODUCT PACKAGING

Carton Size	Qty / Carton	Net Weight / Carton	Gross Weight / Carton
365*365*05 MM	1 PC	3.1 KG	4 KG

\*Tolerance of Carton Size:  $\pm 15$  MM, Tolerance of Weight:  $\pm 10\%$ .



PRODUCT WARNINGS

- ⚡ Please turn off power before install or change assembly parts.
- ⚡ The input voltage and lamps should be matched, after connecting the power line.
- ⚡ Please make sure the wiring section is insulated.
- ⚡ Professionals must install and disassemble the lamps.
- ⚡ Surge is the number 1 cause of LED light failure. Outdoor lights must have surge at fixture, pole, and breaker.
- ⚡ Surge is the number 1 cause of LED light failure. Indoor lights must have surge at fixture and breaker.

PRODUCT TROUBLESHOOTING

Issue	Check points
Light Flickers	Check all wiring for disconnections, shorts and burnt wiring and connections. Confirm steady input voltage to the light fixture, fluctuating input voltage will harm the LED driver and can lead to premature failure. Lights with photocells can have photocell tag from ambient light or light reflecting at the sensor. Simply cover the photocell completely and see if flickering continues while the photocell is covered. Call Tech Support for help if none of the above solves the issue.
Light does not work at all.	Check all wiring for disconnections, shorts and burnt wiring and connections. Confirm steady input voltage to the light fixture, fluctuating input voltage will harm the LED driver and can lead to premature failure. If input voltage is not in the voltage range of the fixture, you will need to find the source of your input voltage issue. Call Tech Support for help if none of the above solves the issue.

For more technical information, install questions, troubleshooting help or warranty claims, we have a dedicated US Tech and Customer Support Team to help solve any issues you have and can be reached by email or phone. If you need help with any of our products, we are here for you so that you are never in the dark!



**BETTER LIGHTS.  
BETTER SUPPORT.**



**CERTIFIED**



**LISTED**



LEGENDARY RUGGEDGRADE QUALITY  
LEGENDARY USA SUPPORT



US based  
phone and online  
customer support



ROCK SOLID  
**5 YEARS**  
WARRANTY