



PRODUCT DESCRIPTION

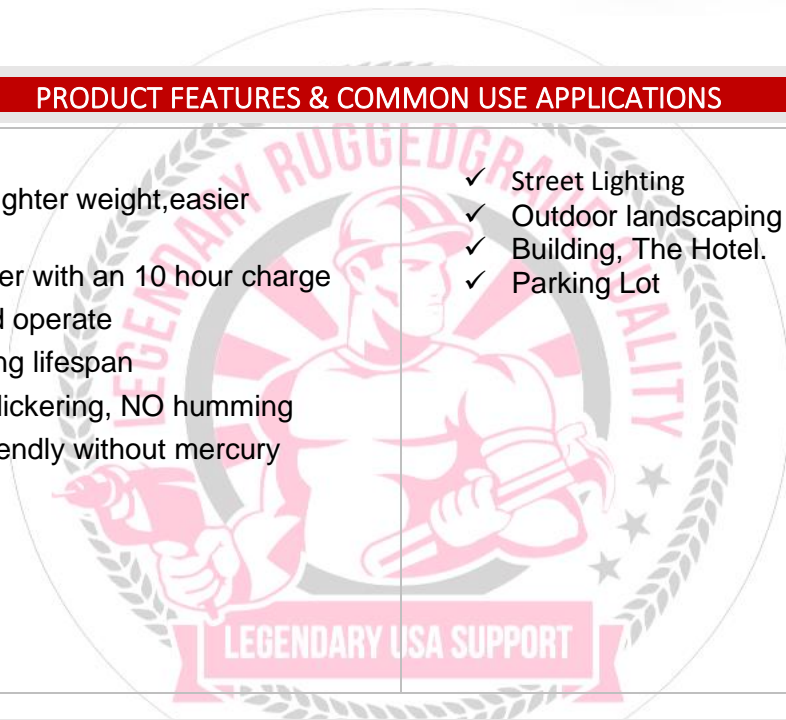
THE NEW SOLAR SERIES IS A NEW PRIVATE DESIGN LED SOLAR STREET LIGHT, WITH A SLIM DESIGN AND A HIGHER CONVERSION EFFICIENCY. MONO-CRYSTALLINE PHOTOVOLTAIC SOLAR PANEL WITH A 3.7V INPUT.



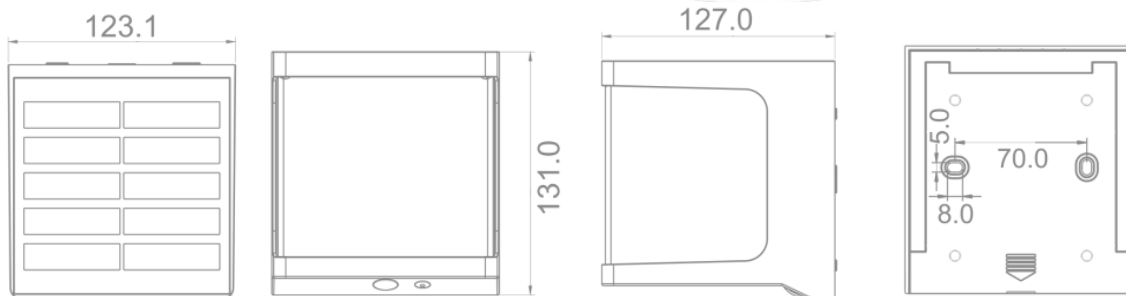
Part #: RG-7W-SOLAR-CUBE

PRODUCT FEATURES & COMMON USE APPLICATIONS

- ✓ Nice design with lighter weight, easier installation
- ✓ Battery life is longer with an 10 hour charge
- ✓ Easy to install and operate
- ✓ Energy saving, long lifespan
- ✓ Instant start, NO flickering, NO humming
- ✓ Green and eco-friendly without mercury
- ✓ Street Lighting
- ✓ Outdoor landscaping light
- ✓ Building, The Hotel.
- ✓ Parking Lot



PRODUCT DIMENSIONS



LEGENDARY USA SUPPORT



US based phone and online customer support

DLC CERTIFIED

5 YEARS WARRANTY

UL LISTED





PRODUCT TECHNICAL SPECIFICATIONS

OPTICAL	Input Power (Tolerance: ±10%)	7W
	Color Temperature	4000K
	Lumen (Tolerance: -10%)	2000LM
	Input Voltage	3.7 V
	Battery	3.7V/7.4WH
	Solar Panel	Monocrystalline silicon, 4.86V/ 1W
	CRI	>80
	Efficiency	285 LM/W
	Installation Height	3 Meters
	Control Mode	Button Switch, ON/OFF Long Press 1.5s
	Lighting Mode	M1: 100LM + PIR (10S) Till dawn
M2: 0LM + PIR (10S) Till dawn		
M3: 300LM Timed 6H		
Mode Indication	M1: Flash for one time, M2: Flash for two times, M3: Flash for three times	
ELECTRICAL	PIR	120°, 5m.Max
	Core technology	ALS 2.3 / TCS 1.0
	Dimming	None
	Optional Accessory	None
	LED Brand	OSRAM 2835
	LED Type	SMD 3030
	LED QTY	39
	Housing	ABS + Panlite PC
	Housing Color	Black
MATERIALS	Waterproof Rating	Wet(IP65)
	Operating Temperature	-25°C TO 50°C
	Storage Temperature	-20°C TO 45°C
	Operating Humidity	20% - 90% RH
	Storage Humidity	10% - 95% RH
	Warranty	1 year warranty
	Charge Time	10hours(with enough strong shine)
OTHERS		

PRODUCT ACCESORIES



PRODUCT IMAGES & FEATURES



Solar Charging Efficiency: >21%

High lumen LEDs 160lm/W

PIR: 120°, 5m.Max



3 lighting modes to choose,
all mode you need are available

M1

100lm
+
PIR (10S) till dawn



M2

0lm
+
PIR (10S) till dawn



M3

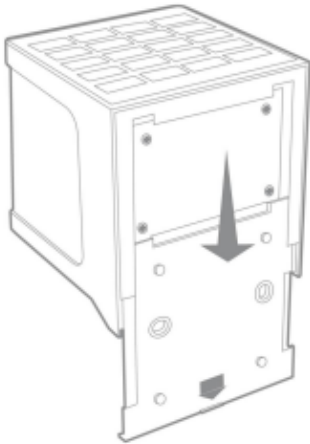
300lm
Timed 6H



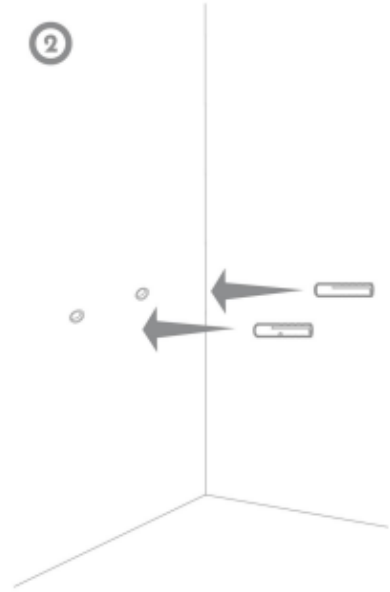
INSTALLATION INSTRUCTIONS

Fix the lamp on the wall with the screws.

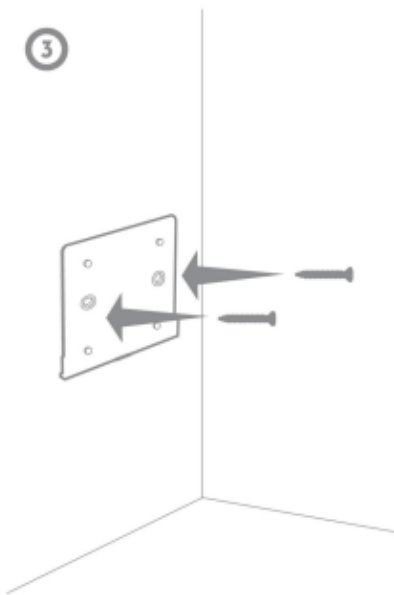
①



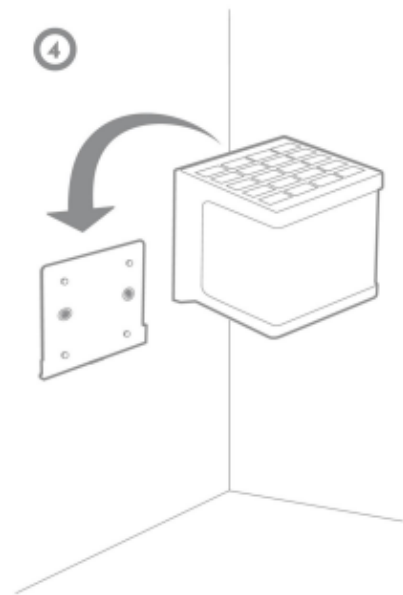
②



③

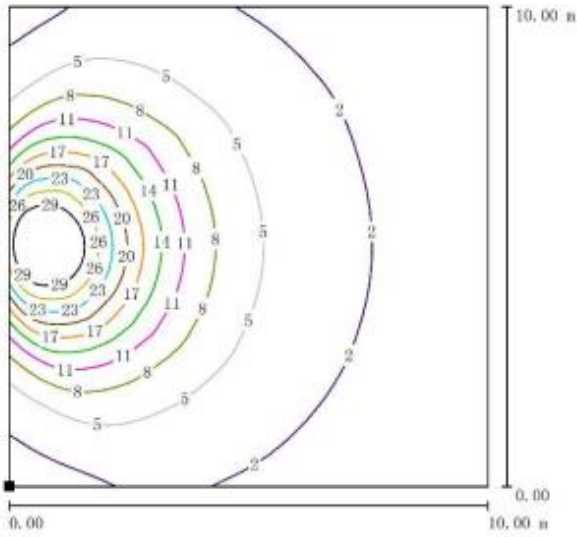


④

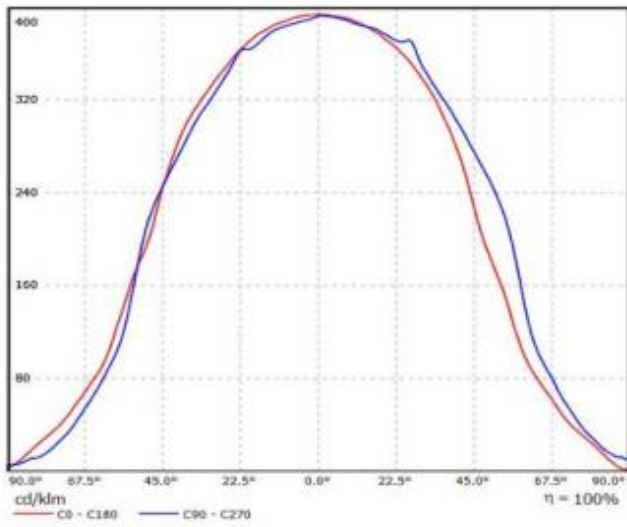


PHOTOMETRICS

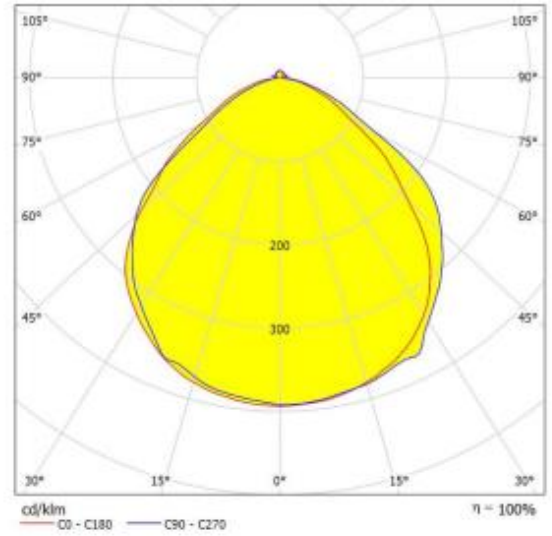
Road Simulated Diagram



Illumination Curve



Luminance Distribution



PACKAGING

PRODUCT LIST
BRACKET: 1 PC
INSTRUCTIONS: 1 PC
SCREW: 1 SET



INNER BOX
1 PC / 1 BOX



1 LAYERS
1 LAYER = 27 BOXES



BRACKET CARTON
27 BOXES / CTN



CARTON

LAYER NUMBER

COLOR BOX

PRODUCT LIST

STEP 1

STEP 2

STEP 3

STEP 4

MODEL NO.	PACKING METHOD	PCS/CTN	QTY(PCS)	CTN QTY	CARTON SIZE(MM)	N.W.(KG)	G.W.(KG)
SWL-18	INNER BOX	1	1	1	138*130*134	/	/
	CARTON	27	27	1	432*408*415	/	17.4

Net weight and gross weight are for reference only



PRODUCT WARNINGS

- ⚡ Please turn off power before install or change assembly parts.
- ⚡ The input voltage and lamps should be matched, after connecting the power line.
- ⚡ Please make sure the wiring section is insulated.
- ⚡ Professionals must install and disassemble the lamps.
- ⚡ Surge is the number 1 cause of LED light failure. Outdoor lights must have surge at fixture, pole, and breaker.
- ⚡ Surge is the number 1 cause of LED light failure. Indoor lights must have surge at fixture and breaker.

PRODUCT TROUBLESHOOTING

Issue	Check points
Light Flickers	Check all wiring for disconnections, shorts and burnt wiring and connections. Confirm steady input voltage to the light fixture, fluctuating input voltage will harm the LED driver and can lead to premature failure. Lights with photocells can have photocell tag from ambient light or light reflecting at the sensor. Simply cover the photocell completely and see if flickering continues while the photocell is covered. Call Tech Support for help if none of the above solves the issue.
Light does not work at all.	Check all wiring for disconnections, shorts and burnt wiring and connections. Confirm steady input voltage to the light fixture, fluctuating input voltage will harm the LED driver and can lead to premature failure. If input voltage is not in the voltage range of the fixture, you will need to find the source of your input voltage issue. Call Tech Support for help if none of the above solves the issue.

For more technical information, install questions, troubleshooting help or warranty claims, we have a dedicated US Tech and Customer Support Team to help solve any issues you have and can be reached by email or phone. If you need help with any of our products, we are here for you so that you are never in the dark!



**BETTER LIGHTS.
BETTER SUPPORT.**



CERTIFIED



LISTED



LEGENDARY RUGGEDGRADE QUALITY
LEGENDARY USA SUPPORT



US based
phone and online
customer support



ROCK SOLID
5 YEARS
WARRANTY