

60W | FULLY TUNABLE LED 4FT VAPOR LIGHT



PRODUCT DESCRIPTION

Our new Vapor tight fixture is back and better than ever with fully tunable technology! Now wattage and color selectable this light is full customizable to fit your lighting needs.

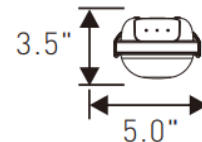
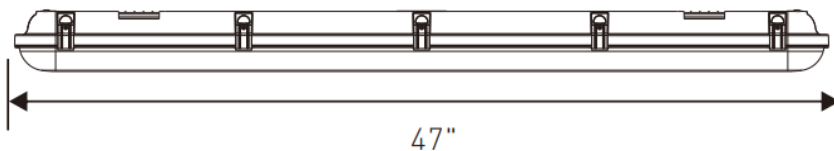


#: RGL-4FT-VAP-60W-TT

PRODUCT FEATURES & COMMON USE APPLICATIONS

- UL cUL DLC certificate.
- Lumileds or Samsung Chip, high CRI.
- Input voltage 120-277VAC.
- No UV or IR in the beam.
- Easy to install and operate.
- Energy saving, long lifespan.
- Light is soft and uniform, safe to eyes.
- Instant start, NO flickering, NO humming.
- Green and eco-friendly without mercury.
- Warehouse, factory, and workshops.
- Highway toll station and gas station.
- Exhibition hall.
- Gymnasium and supermarkets, etc

PRODUCT DIMENSIONS



LEGENDARY USA SUPPORT



US based phone and online customer support



Rugged Grade Lighting
Industrial Grade Solutions



888-953-2476
sales@ruggedgrade.com



PRODUCT IMAGES & ACTUAL INSTALLATIONS

OPTICAL	Input Power (Tolerance : ±10%)	40/50/60W(Wattage Selectable)		
	Color Temperature	3000K	4000K	5000K
	Lumen (Tolerance : -10%)	7500LM	7800LM	7700LM
	Efficacy (Tolerance : -3%)	125LM/W	130LM/W	128LM/W
	CRI	>80		
	Color Consistency	<7 Steps (or <7 SDCM)		
	UGR (Glare Rating)	<28 (X=4H, Y=8H; S/H=1; Reflectances: 70%/50%/20%)		
	Diffuser Type	PC Lens(Shatter Proof Lens)		
Beam Angle (50%) (Tolerance :	110 Degree			
ELECTRICAL	Input Voltage and Frequency	120-277VAC, 50/60Hz		
	PF (Tolerance : -3%)	≥0.95		
	THD (Tolerance : +5%)	≤20%		
	Driver Efficacy	<90%		
	Driver Brand	Rugged Grade Lighting		
	Driver Model	Rugged Grade Lighting Driver		
	Driver Surge protection	L/N-PE: 6kV, L-N: 4kV		
	Dimming	Wattage Selectable Switch		
	Optional Accessory	15W Battery Back up		
MATERIALS	LED Brand	Lumileds		
	LED Type	SMD2835		
	LED QTY	198PCS		
	Housing	PC		
	Housing Color	Grey		
	Waterproof Rating	WET (IP65)		
OTHERS	Operating Temperature	-40F TO 104F		
	Storage Temperature	-40F TO 104F		
	Operating Humidity	20% - 90% RH		
	Storage Humidity	10% - 95% RH		
	Warranty	5 years warranty with 24/7 operating hours Luminaire lifetime at		

PRODUCT MOUNTS & ACCESSORIES



PRODUCT IMAGES & ACTUAL INSTALLATIONS

APPLICATIONS:



Supermarket

Farm



Parking garage

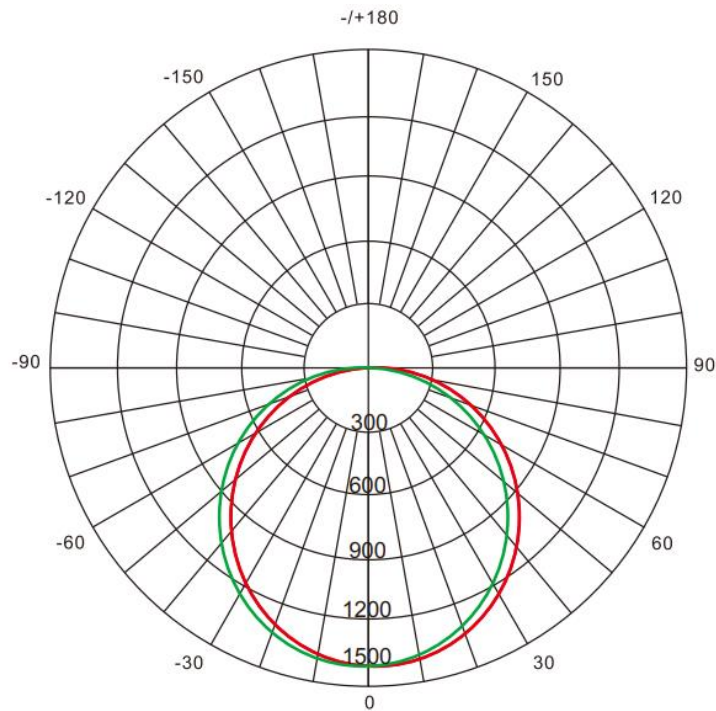


Warehouses





PHOTOMETRICS



AVERAGE BEAM ANGLE(50%): 113°

Test Number:LS-VT40WF4-50K
Lumens:5200LM
Test Number:40W
Test Number:5000K

UNIT:CD

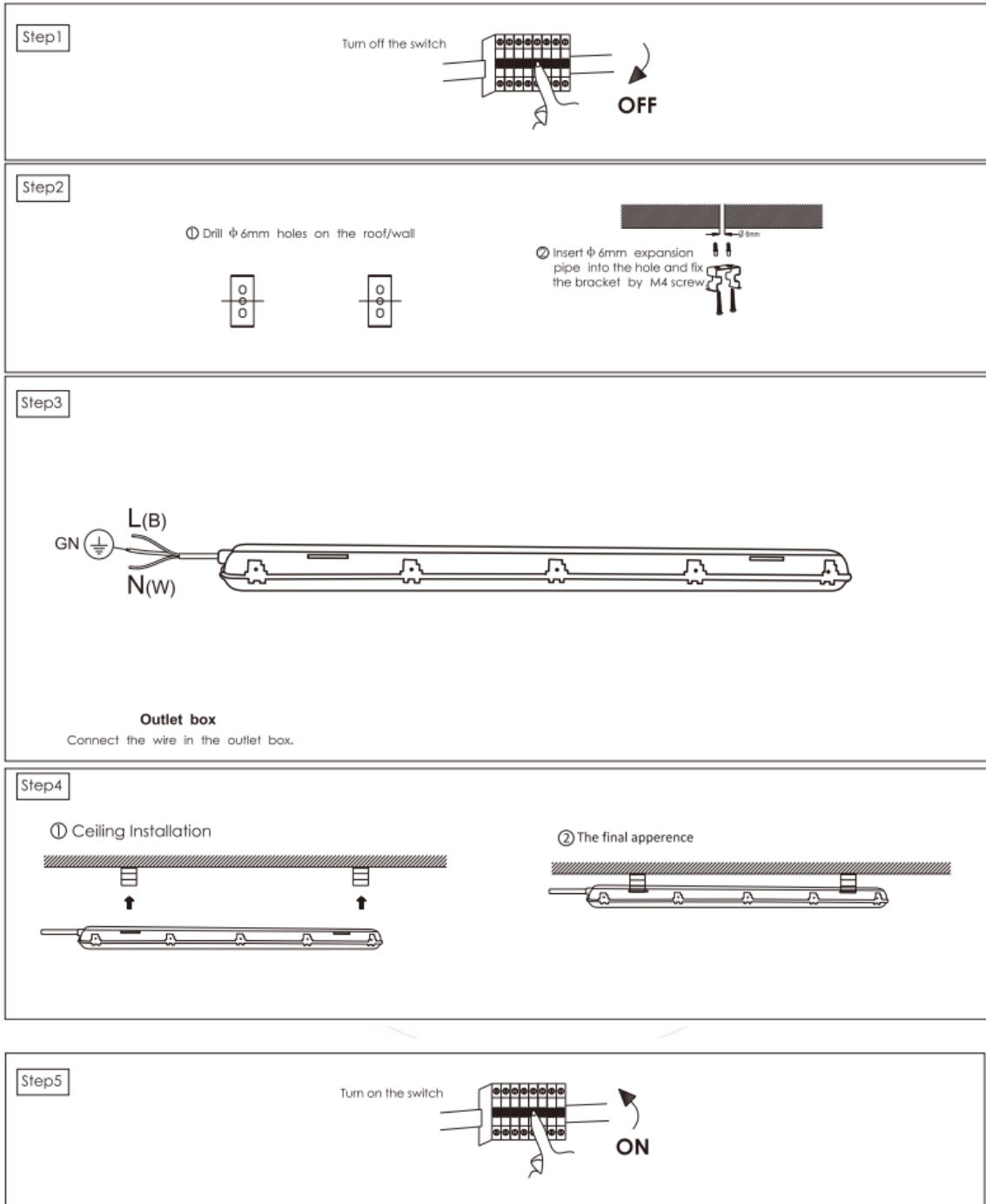
— C0/180,110.9
— C30/210,110.5
— C60/240,109.3.
— C90/270,109.1

INSTALLATION WARNING

1. The installation and maintenance must be completed by electricians or professionals.
2. Please cut off the power before installation and maintenance.
3. The thermally insulating material is not allowed to cover the fixture.
4. Please keep away from the corrosive substance, and keep the fixture dry and clean.
5. Working temperature: -4°F~104°F, storage temperature: -22°F~140°F.



INSTALLATION



Caution: Please note that DO NOT use this product in the following places/application

- 1.The place has a large quantity of lampblack and smoke,such as:kitchen and Food processing factory etc.
- 2.The place has a large quantity of chemical corrosive substance,such as:chemical plant and stockyard etc.
- 3.The place has poor temperature conditions,large-scale temperature variation,which would easily lead to broken and damage the product,the applicable operating temperature is between -15 and 45 degrees.

ATTENTION: à noter qu'il ne faut pas utiliser le produit dans les endroits suivants

1. Dans un lieu avec une grande quantité de fumé, par exemple: cuisine, une usine de transformation alimentaire etc.
2. Dans un endroit avec une grande quantité de substance corrosive chimique, tels qu'une: usine de produits chimiques, parc de stockage, etc.
3. Dans des lieux froids ou à variations de température à grande échelle, qui pourrait facilement emmener à casser et/ou endommager le produit. La température de fonctionnement applicable au produit est comprise entre -15 et 45 degrés.





PRODUCT PACKAGING

Size	Master Carton Size (LxWxH)	Qty/Carton	Weight (KG) / (LBS)
4FT	47" × 5.7" × 3.5"	6	12.5KG/27.7lbs

*Tolerance of Carton Size: ± 15 MM, Tolerance of Weight: $\pm 10\%$.



PRODUCT WARNINGS

- ⚡ Please turn off power before install or change assembly parts.
- ⚡ The input voltage and lamps should be matched, after connecting the power line.
- ⚡ Please make sure the wiring section is insulated.
- ⚡ Professionals must install and disassemble the lamps.
- ⚡ Surge is the number 1 cause of LED light failure. Outdoor lights must have surge at fixture, pole, and breaker.
- ⚡ Surge is the number 1 cause of LED light failure. Indoor lights must have surge at fixture and breaker.

PRODUCT TROUBLESHOOTING

Issue	Check points
Light Flickers	Check all wiring for disconnections, shorts and burnt wiring and connections. Confirm steady input voltage to the light fixture, fluctuating input voltage will harm the LED driver and can lead to premature failure. Lights with photocells can have photocell tag from ambient light or light reflecting at the sensor. Simply cover the photocell completely and see if flickering continues while the photocell is covered. Call Tech Support for help if none of the above solves the issue.
Light does not work at all.	Check all wiring for disconnections, shorts and burnt wiring and connections. Confirm steady input voltage to the light fixture, fluctuating input voltage will harm the LED driver and can lead to premature failure. If input voltage is not in the voltage range of the fixture, you will need to find the source of your input voltage issue. Call Tech Support for help if none of the above solves the issue.

For more technical information, install questions, troubleshooting help or warranty claims, we have a dedicated US Tech and Customer Support Team to help solve any issues you have and can be reached by email or phone. If you need help with any of our products, we are here for you so that you are never in the dark!

BETTER LIGHTS. BETTER SUPPORT.

