

150W HERCULES II | LED EXPLOSION PROOF LIGHT



PRODUCT DESCRIPTION

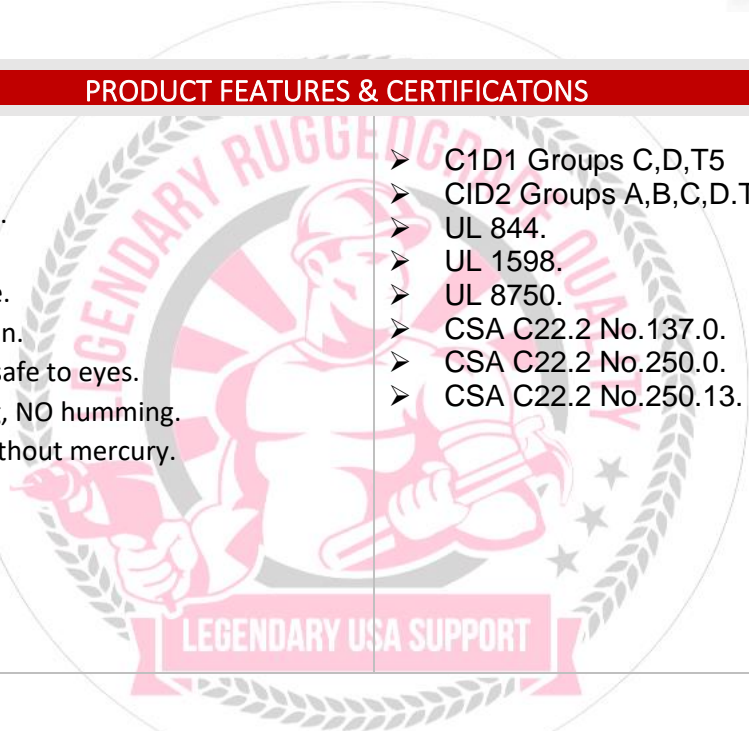
The New Hercules II Series is here with a new flood light design but keeps all toughness of an explosion proof light. This New model comes with all necessary C1D1 and C1D2 certifications!



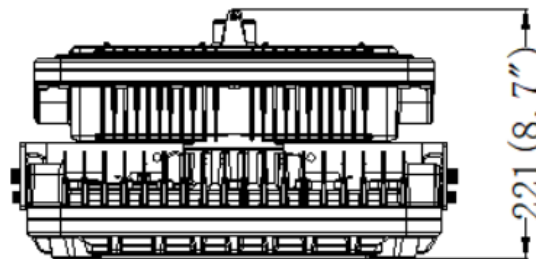
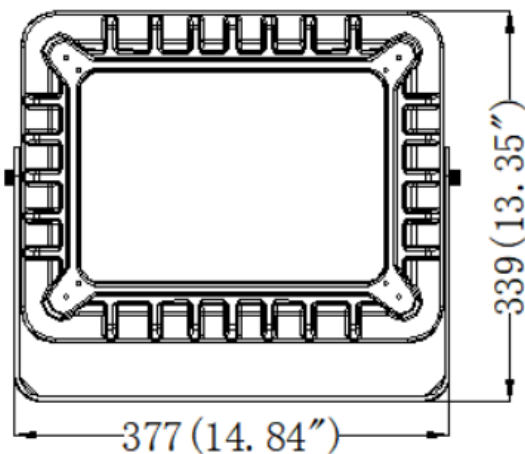
Part #: RGL-HERCULES-2-150W

PRODUCT FEATURES & CERTIFICATIONS

- UL cUL certificate.
- Input voltage 120-277VAC.
- No UV or IR in the beam.
- Easy to install and operate.
- Energy saving, long lifespan.
- Light is soft and uniform, safe to eyes.
- Instant start, NO flickering, NO humming.
- Green and eco-friendly without mercury.
- C1D1 Groups C,D,T5
- CID2 Groups A,B,C,D.T4/T4A
- UL 844.
- UL 1598.
- UL 8750.
- CSA C22.2 No.137.0.
- CSA C22.2 No.250.0.
- CSA C22.2 No.250.13.



PRODUCT DIMENSIONS



Rugged Grade Lighting
Industrial Grade Solutions



LEGENDARY USA SUPPORT



US based
phone and online
customer support



CERTIFIED

5 YEARS
WARRANTY



LISTED



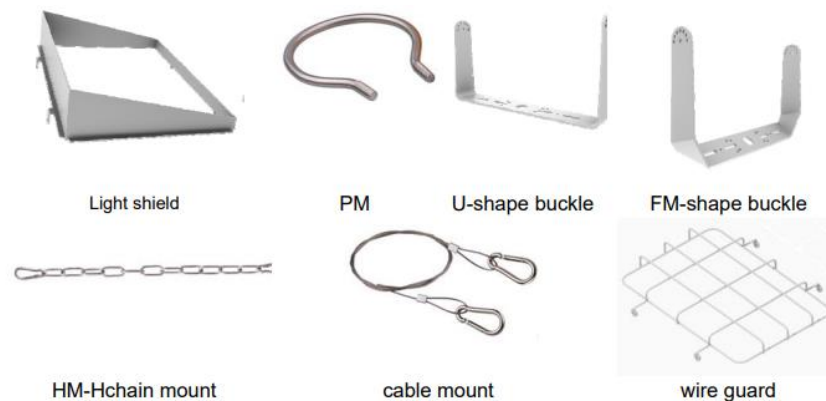
888-953-2476
sales@ruggedgrade.com



PRODUCT TECHNICAL SPECIFICATIONS

OPTICAL	Input Power (Tolerance : ±10%)	150W		
	Color Temperature	5000K		
	Cover	Clear Glass	Clear Glass+ 7H6V Lens	Clear Glass+23 degree lens
	Lumen (Tolerance : -10%)	31000LM	30600LM	27200LM
	Efficacy (Tolerance : -3%)	155LM/W	153LM/W	136LM/W
	CRI	>70		
	Color Consistency	< 7 Steps (or <7 SDCM)		
	UGR (Glare Rating)	< 28 (X=4H, Y=8H; S/H=1; Reflectances: 70%/50%/20%)		
	Diffuser Type	PC Lens		
	Beam Angle (50%) (Tolerance :	140°×120°(7H6V);23°(S2);T1-T5;5H5V-7H7V;S3-S9;110°		
ELECTRICAL	Input Voltage and Frequency	120-277VAC, 50/60Hz		
	PF (Tolerance : -3%)	≥0.9		
	THD (Tolerance : +5%)	≤20%		
	Flicker Percent	< 5%		
	Driver Brand	Rugged Grade Lighting		
	Driver Model	SS-200VP-56BH		
	Driver Surge protection	L/N-PE: 10kV, L-N:6kV		
	LED Brand	Lumileds		
	LED Type	Bridgelux / SMD3030 (1W)		
MATERIALS	LED QTY	312PCS		
	Housing	Aluminum Alloy		
	Housing Color	Grey, or Customized		
	Waterproof Rating	WET (IP66)		
	Operating Temperature	-40°C TO 55°C		
OTHERS	Operating Humidity	10% - 90% RH		
	Storage Humidity	10% - 95% RH		
	Warranty	5 years warranty with 24/7 operating hours Luminaire lifetime at 25°C.		

PRODUCT MOUNTS & ACCESSORIES





PRODUCT IMAGES & ACTUAL INSTALLATIONS

1. Suitable for gas station, petroleum and chemical industries, coal mine, military, airport, warehouse, marine etc.
2. Zone1 & Zone2 gaseous environment, and Zone21 & Zone22 dust environment.
3. Class I Division 2 Group A, B, C, D



Chemical Factory



Offshore Oil Mining



Military Ship



Army Base



Gas Station



Petrol Process Factory



Traning Camp



Navy Port





PHOTOMETRICS & DLC PRODUCT SPEC

Luminaire Property

Luminaire Manufacturer:

Voltage: 120.8 V

Power: 204.30 W

Current: 1.696 A

Power Factor: 0.997

Photometric Results

IES Classification: Type I

Total Rated Lamp Lumens: 31316.6 lm

Efficiency: 100%

Upward Ratio: 0%

Central Intensity: 13805.4 cd

Pos of Max. Intensity: H0 V13

Longitudinal Classification: Very Short

Measurement Flux: 31316.6 lm

Downward Ratio: 100%

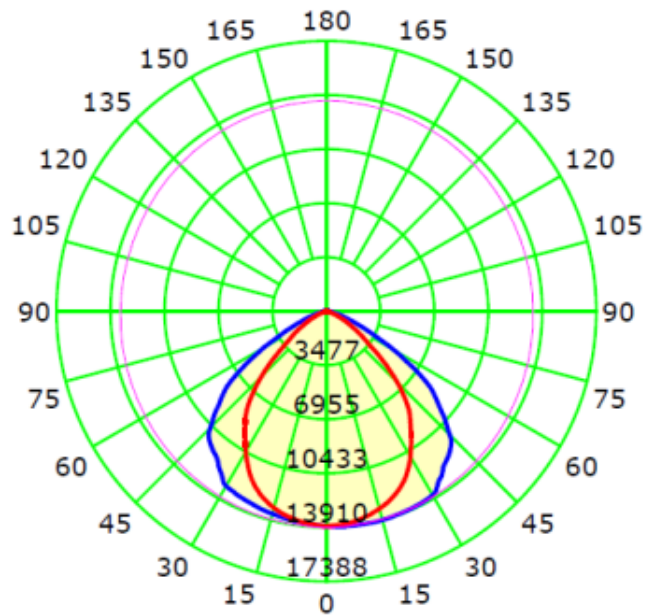
Luminaire Efficacy Rating (LER): 153.34

Max. Intensity: 13910.74 cd

Picture Of Luminaire



Luminous Intensity Distribution Curve



Unit: cd

Average Diffuse Angle(50%): 99.1°

— C0-C180 — C90-C270 — G13



PRODUCT PACKAGING

		clear glass (with U-shape bracket or FM bracket)
Lamps Net Weight		15.7kg
Outer box	size	452×442×285mm
	Qty/ Carton	1 PC
	Weight/Carton	17.3kg

*Tolerance of Carton Size: ±15 MM, Tolerance of Weight: ±10%.



PRODUCT WARNINGS

- ⚠ Please turn off power before install or change assembly parts.
- ⚠ The input voltage and lamps should be matched, after connecting the power line.
- ⚠ Please make sure the wiring section is insulated.
- ⚠ Professionals must install and disassemble the lamps.
- ⚠ Surge is the number 1 cause of LED light failure. Outdoor lights must have surge at fixture, pole, and breaker.
- ⚠ Surge is the number 1 cause of LED light failure. Indoor lights must have surge at fixture and breaker.

PRODUCT TROUBLESHOOTING

Issue	Check points
Light Flickers	Check all wiring for disconnections, shorts and burnt wiring and connections. Confirm steady input voltage to the light fixture, fluctuating input voltage will harm the LED driver and can lead to premature failure. Lights with photocells can have photocell tag from ambient light or light reflecting at the sensor. Simply cover the photocell completely and see if flickering continues while the photocell is covered. Call Tech Support for help if none of the above solves the issue.
Light does not work at all.	Check all wiring for disconnections, shorts and burnt wiring and connections. Confirm steady input voltage to the light fixture, fluctuating input voltage will harm the LED driver and can lead to premature failure. If input voltage is not in the voltage range of the fixture, you will need to find the source of your input voltage issue. Call Tech Support for help if none of the above solves the issue.

For more technical information, install questions, troubleshooting help or warranty claims, we have a dedicated US Tech and Customer Support Team to help solve any issues you have and can be reached by email or phone. If you need help with any of our products, we are here for you so that you are never in the dark!

BETTER LIGHTS. BETTER SUPPORT.

