

72 LED Warehouse Lights - 210x100ft -240 watts

72 quantity LED Warehouse Lights 210x100ft space -25ft -height - with 240 watt Titan II LED High Bay Lights

Partner for Contact: *removed*

Order No.:

Company:

Customer No.:

Date: 02 / 18 / 2019

Operator: LEDLightExpert.com

LEDLightExpert.com

Operator LEDLightExpert.com
Telephone 800-674-9420
Fax
e-Mail

Table of contents

72 LED Warehouse Lights - 210x100ft -240 watts

Project Cover	1
Table of contents	2
Luminaire parts list	3
RG-HB05-240WMACGD2	
Luminaire Data Sheet	4
Room 1	
Summary	5
Luminaire parts list	6
Photometric Results	7
3D Rendering	8
False Color Rendering	9
Room Surfaces	
Floor	
Isolines (E)	10
Value Chart (E)	11

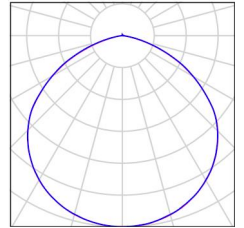
LEDLightExpert.com

Operator LEDLightExpert.com
Telephone 800-674-9420
Fax
e-Mail

72 LED Warehouse Lights - 210x100ft -240 watts / Luminaire parts list

72 Pieces RG-HB05-240WMACGD2
Article No.:
Luminous flux (Luminaire): 33278 lm
Luminous flux (Lamps): 1000 lm
Luminaire Wattage: 243.3 W
Luminaire classification according to CIE: 100
CIE flux code: 50 84 98 100 3328
Fitting: 1 x User defined (Correction Factor 1.000).

See our luminaire catalog for an image of the luminaire.



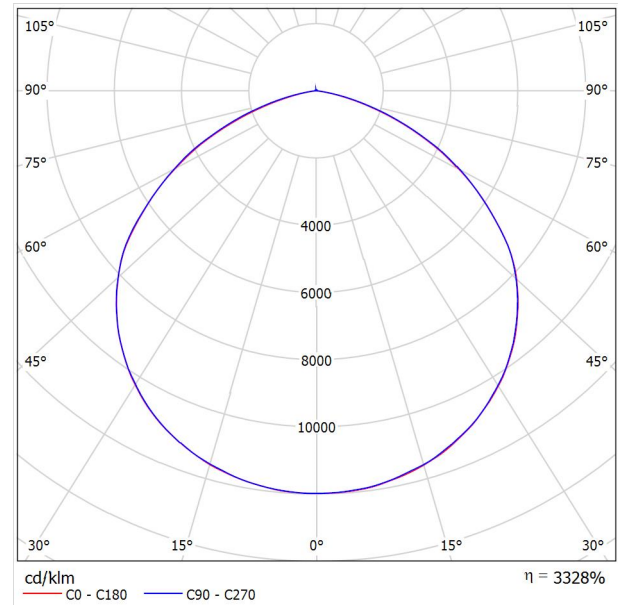
LEDLightExpert.com

Operator LEDLightExpert.com
Telephone 800-674-9420
Fax
e-Mail

RG-HB05-240WMACGD2 / Luminaire Data Sheet

Luminous emittance 1:

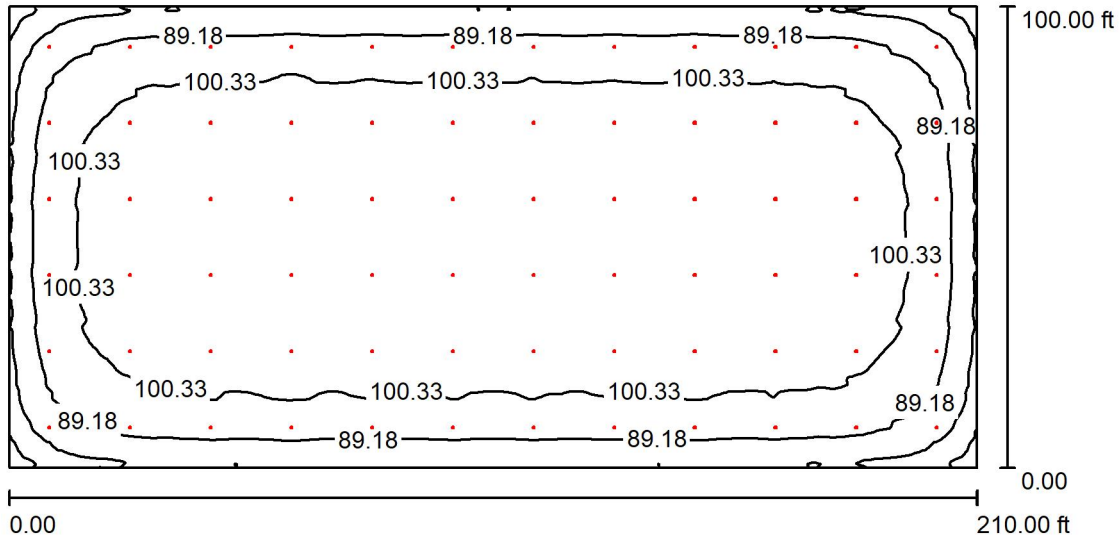
See our luminaire catalog for an image of the luminaire.



Luminaire classification according to CIE: 100
CIE flux code: 50 84 98 100 3328

Due to missing symmetry properties, no UGR table can be displayed for this luminaire.

Room 1 / Summary



Height of Room: 25.200 ft, Mounting Height: 25.000 ft, Light loss factor: 0.80 Values in Footcandles, Scale 1:500

Surface	ρ [%]	E_{av} [fc]	E_{min} [fc]	E_{max} [fc]	$u0$
Workplane	/	99	58	109	0.587
Floor	20	97	56	108	0.574
Ceiling	70	27	23	82	0.857
Walls (4)	87	52	24	71	/

Workplane:

Height: 2.789 ft
 Grid: 128 x 128 Points
 Boundary Zone: 0.000 ft

Illuminance Quotient (according to LG7): Walls / Working Plane: 0.529, Ceiling / Working Plane: 0.275.

Luminaire Parts List

No.	Pieces	Designation (Correction Factor)	Φ (Luminaire) [lm]	Φ (Lamps) [lm]	P [W]
1	72	RG-HB05-240WMACGD2 (1.000)	33278	1000	243.3
			Total: 2396015	Total: 72000	17517.6

Specific connected load: 0.83 W/sq ft = 0.08 W/sq ft/10 fc (Ground area: 21000.49 sq ft)

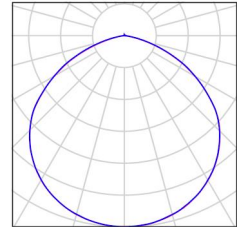
LEDLightExpert.com

Operator LEDLightExpert.com
Telephone 800-674-9420
Fax
e-Mail

Room 1 / Luminaire parts list

72 Pieces RG-HB05-240WMACGD2
Article No.:
Luminous flux (Luminaire): 33278 lm
Luminous flux (Lamps): 1000 lm
Luminaire Wattage: 243.3 W
Luminaire classification according to CIE: 100
CIE flux code: 50 84 98 100 3328
Fitting: 1 x User defined (Correction Factor 1.000).

See our luminaire catalog for an image of the luminaire.



LEDLightExpert.com

Operator LEDLightExpert.com
 Telephone 800-674-9420
 Fax
 e-Mail

Room 1 / Photometric Results

Total Luminous Flux: 2396015 lm
 Total Load: 17517.6 W
 Light loss factor: 0.80
 Boundary Zone: 0.000 ft

Surface	Average illuminances [fc]			Reflection factor [%]	Average luminance [cd/m ²]
	direct	indirect	total		
Workplane	73	26	99	/	/
Floor	71	26	97	20	67
Ceiling	0.25	27	27	70	65
Wall 1	28	24	52	87	155
Wall 2	27	25	52	87	154
Wall 3	28	24	52	87	155
Wall 4	27	25	52	87	156

Uniformity on the working plane

u_0 : 0.587 (1:2)

E_{min} / E_{max} : 0.531 (1:2)

Illuminance Quotient (according to LG7): Walls / Working Plane: 0.529, Ceiling / Working Plane: 0.275.

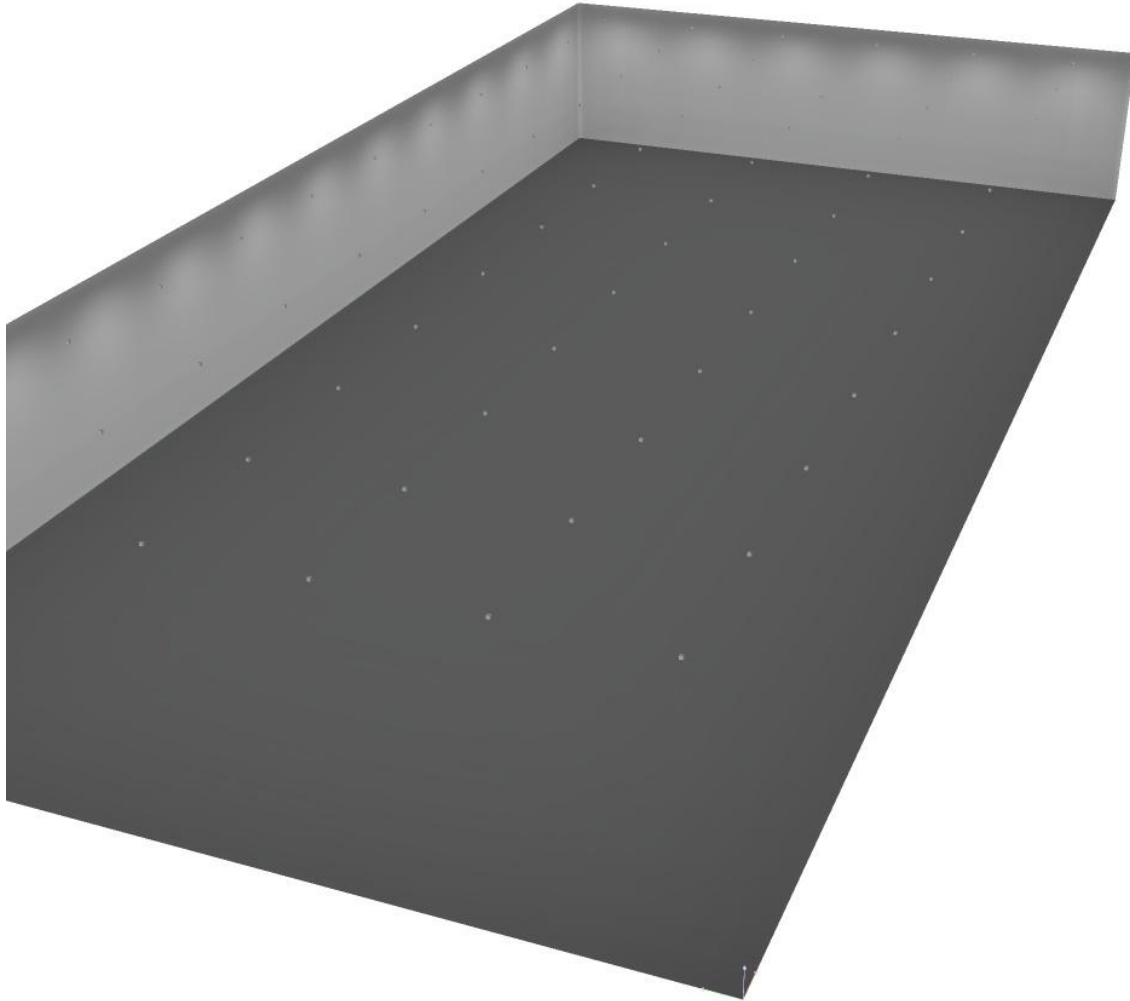
Specific connected load: 0.83 W/sq ft = 0.08 W/sq ft/10 fc (Ground area: 21000.49 sq ft)



LEDLightExpert.com

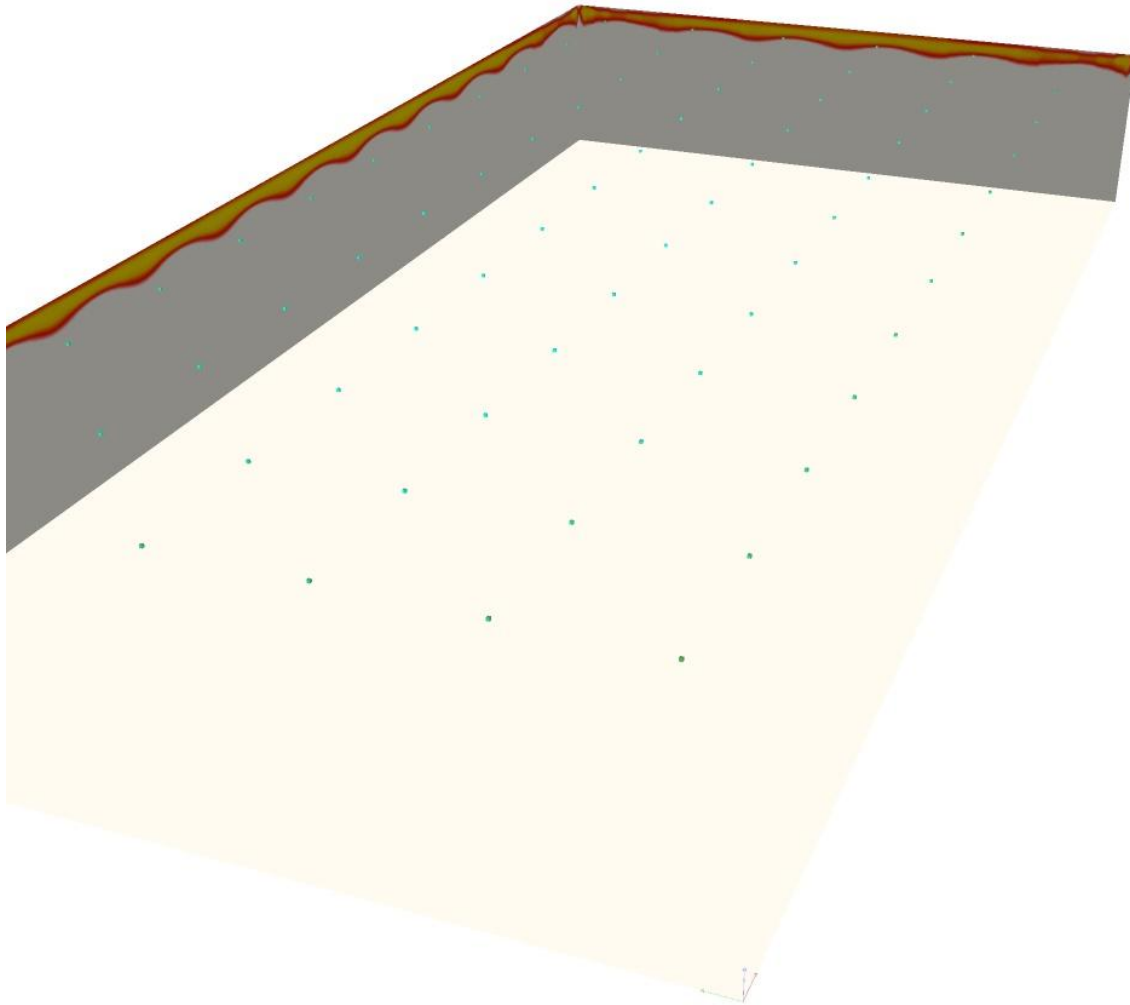
Operator LEDLightExpert.com
Telephone 800-674-9420
Fax
e-Mail

Room 1 / 3D Rendering





Room 1 / False Color Rendering



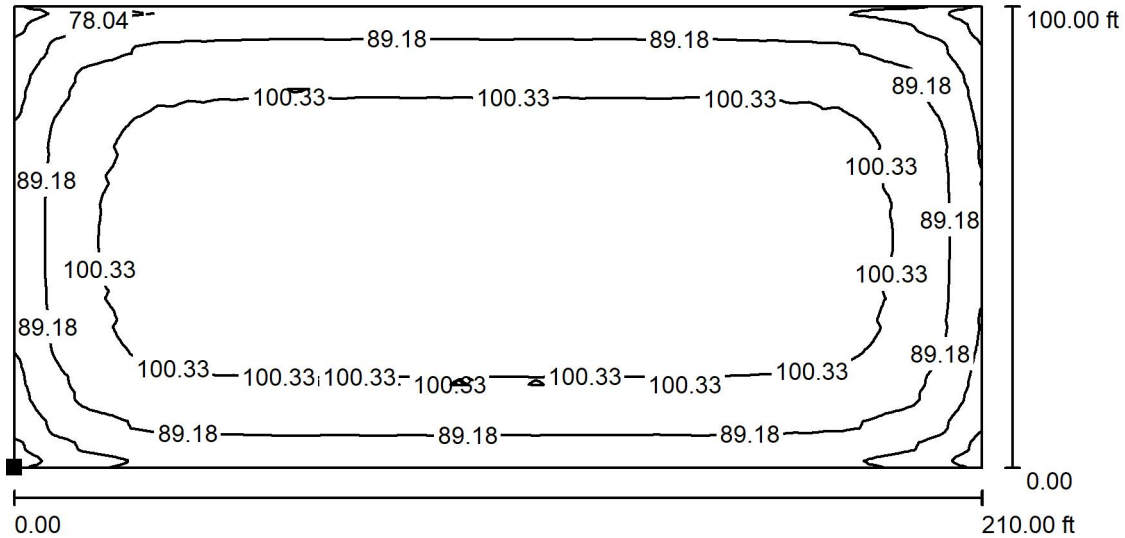
0 5.00 10.00 14.00 18.00 22.00 27.00 31.00 35.00

fc

LEDLightExpert.com

Operator LEDLightExpert.com
 Telephone 800-674-9420
 Fax
 e-Mail

Room 1 / Floor / Isolines (E)



Values in Footcandles, Scale 1 : 500

Position of surface in room:
 Marked point:
 (0.000 ft, 0.000 ft, 0.000 ft)



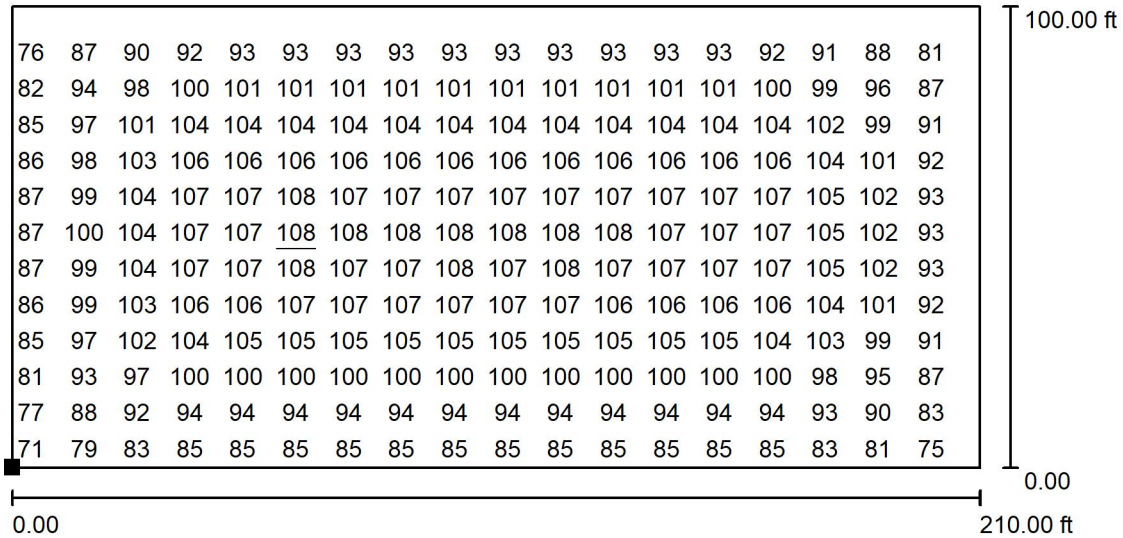
Grid: 128 x 128 Points

E_{av} [fc]	E_{min} [fc]	E_{max} [fc]	u_0	E_{min} / E_{max}
97	56	108	0.574	0.518

LEDLightExpert.com

Operator LEDLightExpert.com
 Telephone 800-674-9420
 Fax
 e-Mail

Room 1 / Floor / Value Chart (E)



Values in Footcandles, Scale 1 : 500

Not all calculated values could be displayed.

Position of surface in room:
 Marked point:
 (0.000 ft, 0.000 ft, 0.000 ft)



Grid: 128 x 128 Points

E_{av} [fc]	E_{min} [fc]	E_{max} [fc]	u0	E_{min} / E_{max}
97	56	108	0.574	0.518