

Horse Arena 250x150 with 16qty of 300 watt light - 8 poles with 1 at each end

Horse Arena 250x150 with 16qty of 300 watt light. 30 Ft Poles. 8 poles with 1 at each end

Partner for Contact:
Order No.:
Company:
Customer No.:

Date: 02 / 18 / 2019
Operator: LEDLightExpert.com

LEDLightExpert.com

Operator LEDLightExpert.com
 Telephone 800-674-9420
 Fax
 e-Mail

Table of contents

Horse Arena 250x150 with 16qty of 300 watt light - 8 poles with 1 a...	
Project Cover	1
Table of contents	2
Luminaire parts list	3
RG-NextGen-2-S-G07-300WCT3A1-BHPAM50	
Luminaire Data Sheet	4
RG-PL08-600WCT3A1-BHPAM50	
Luminaire Data Sheet	5
Exterior Scene 1	
Planning data	6
Luminaire parts list	7
Floor plan	8
Luminaires (layout plan)	9
Luminaires (coordinates list)	10
3D Rendering	11
False Color Rendering	12
Exterior Surfaces	
Ground Element 1	
Surface 1	
Isolines (E)	13
Value Chart (E)	14

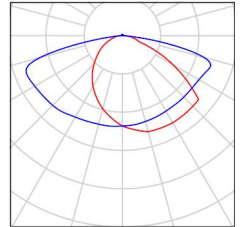
LEDLightExpert.com

Operator LEDLightExpert.com
Telephone 800-674-9420
Fax
e-Mail

Horse Arena 250x150 with 16qty of 300 watt light - 8 poles with 1 at each end / Luminaire parts list

16 Pieces RG-NextGen-2-S-G07-300WCT3A1-BHPAM50
Article No.:
Luminous flux (Luminaire): 38254 lm
Luminous flux (Lamps): 38254 lm
Luminaire Wattage: 291.1 W
Luminaire classification according to CIE: 99
CIE flux code: 36 68 92 99 100
Fitting: 1 x User defined (Correction Factor 1.000).

See our luminaire catalog for an image of the luminaire.



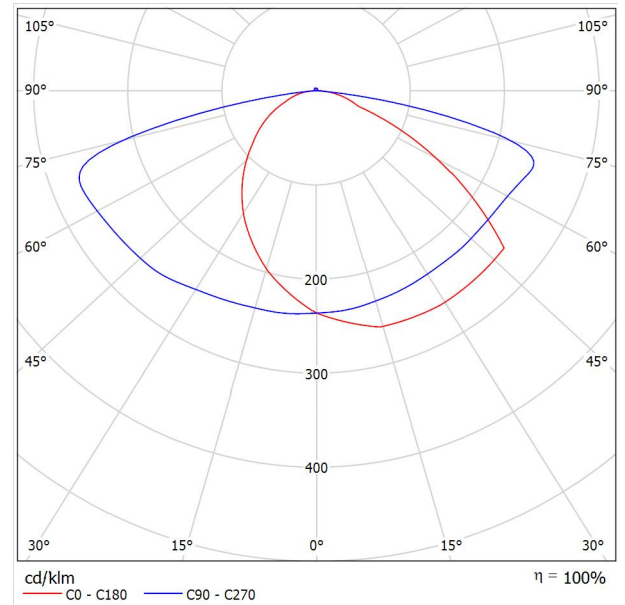
LEDLightExpert.com

Operator LEDLightExpert.com
Telephone 800-674-9420
Fax
e-Mail

RG-NextGen-2-S-G07-300WCT3A1-BHPAM50 / Luminaire Data Sheet

Luminous emittance 1:

See our luminaire catalog for an image of the luminaire.



Luminaire classification according to CIE: 99
CIE flux code: 36 68 92 99 100

Due to missing symmetry properties, no UGR table can be displayed for this luminaire.

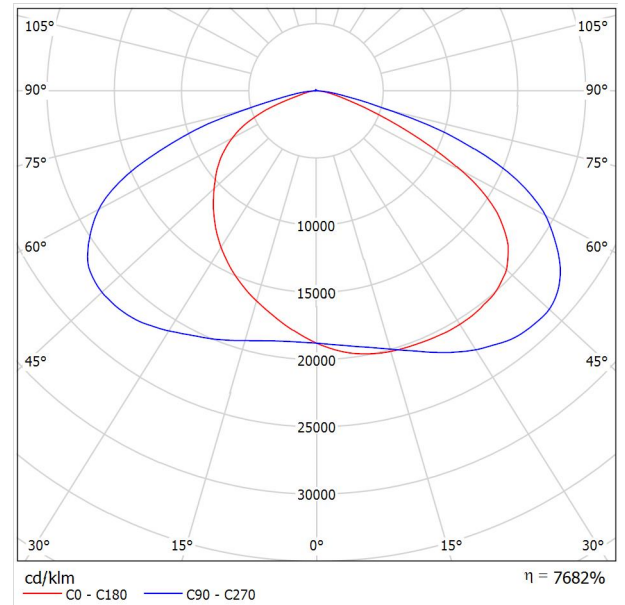
LEDLightExpert.com

Operator LEDLightExpert.com
Telephone 800-674-9420
Fax
e-Mail

RG-PL08-600WCT3A1-BHPAM50 / Luminaire Data Sheet

Luminous emittance 1:

See our luminaire catalog for an image of the luminaire.



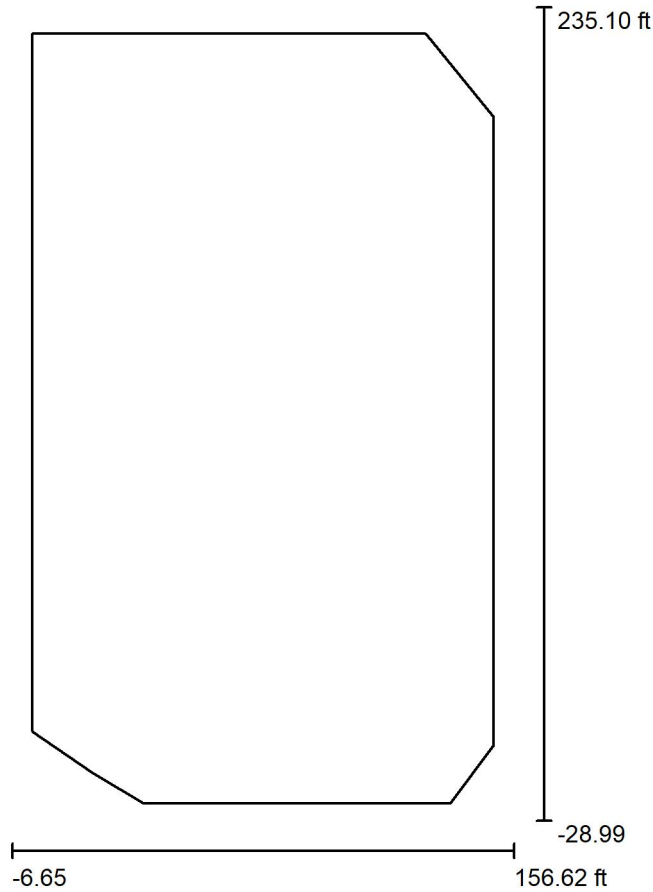
Luminaire classification according to CIE: 100
CIE flux code: 39 76 96 100 7679

Due to missing symmetry properties, no UGR table can be displayed for this luminaire.

LEDLightExpert.com

Operator LEDLightExpert.com
 Telephone 800-674-9420
 Fax
 e-Mail

Exterior Scene 1 / Planning data



Light loss factor: 0.80, ULR (Upward Light Ratio): 55.0%

Scale 1:750

Luminaire Parts List

No.	Pieces	Designation (Correction Factor)	Φ (Luminaire) [lm]	Φ (Lamps) [lm]	P [W]
1	16	RG-NextGen-2-S-G07-300WCT3A1-BHPAM50 (1.000)	38254	38254	291.1
Total:			612056	612064	4657.6

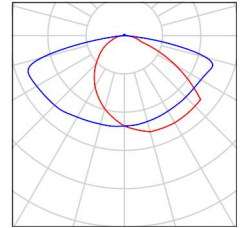
LEDLightExpert.com

Operator LEDLightExpert.com
Telephone 800-674-9420
Fax
e-Mail

Exterior Scene 1 / Luminaire parts list

16 Pieces RG-NextGen-2-S-G07-300WCT3A1-BHPAM50
Article No.:
Luminous flux (Luminaire): 38254 lm
Luminous flux (Lamps): 38254 lm
Luminaire Wattage: 291.1 W
Luminaire classification according to CIE: 99
CIE flux code: 36 68 92 99 100
Fitting: 1 x User defined (Correction Factor 1.000).

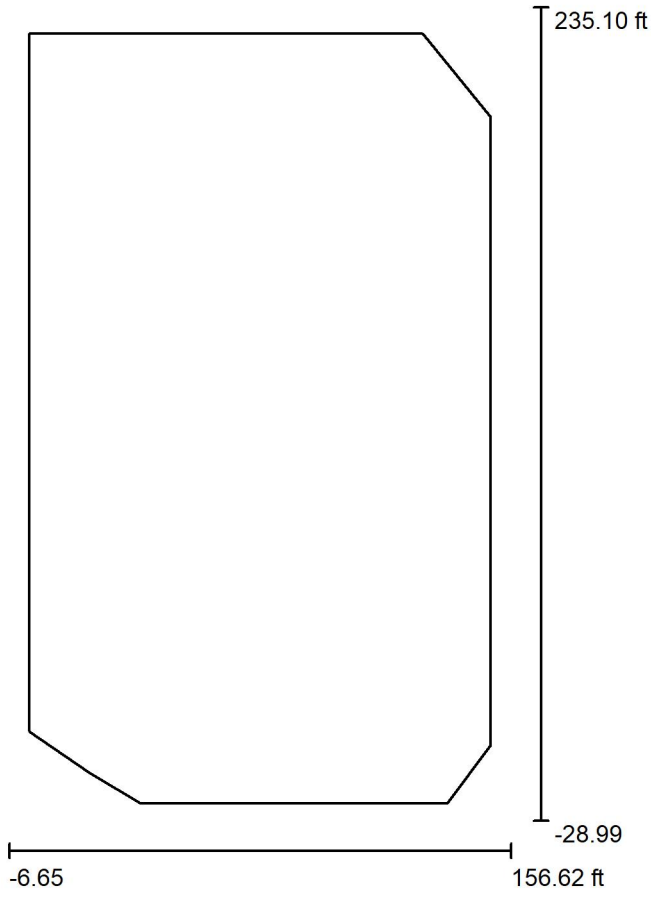
See our luminaire catalog for an image of the luminaire.



LEDLightExpert.com

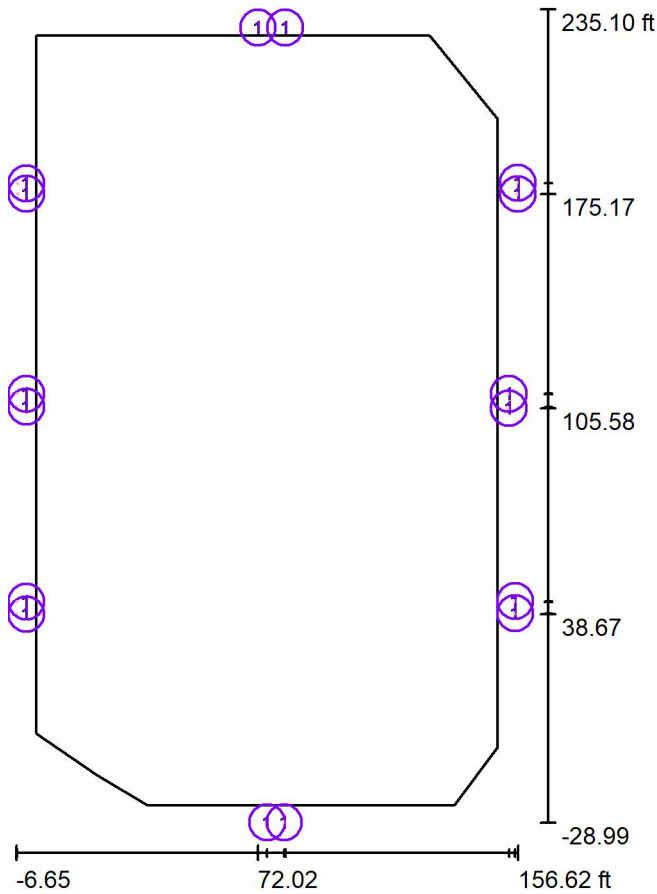
Operator LEDLightExpert.com
Telephone 800-674-9420
Fax
e-Mail

Exterior Scene 1 / Floor plan



Scale 1 : 750

Exterior Scene 1 / Luminaires (layout plan)



Scale 1 : 750

Luminaire Parts List

No.	Pieces	Designation
1	16	RG-NextGen-2-S-G07-300WCT3A1-BHPAM50

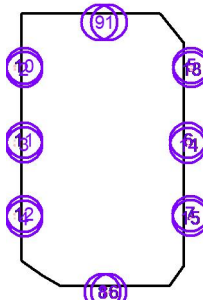
LEDLightExpert.com

Operator LEDLightExpert.com
 Telephone 800-674-9420
 Fax
 e-Mail

Exterior Scene 1 / Luminaires (coordinates list)

RG-NextGen-2-S-G07-300WCT3A1-BHPAM50

38254 lm, 291.1 W, 1 x 1 x User defined (Correction Factor 1.000).

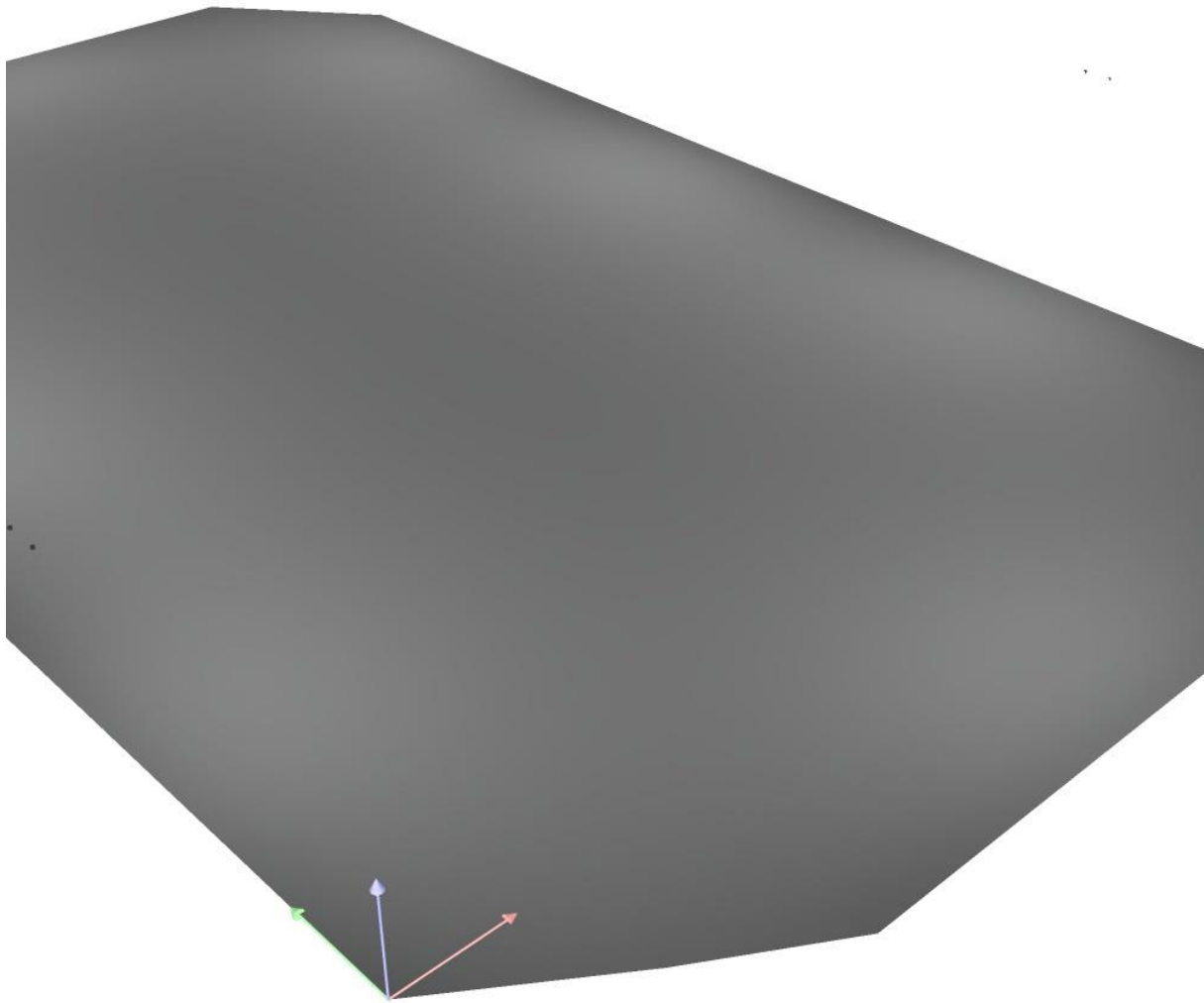


No.	Position [ft]			Rotation [°]		
	X	Y	Z	X	Y	Z
1	80.955	235.069	30.000	0.0	-80.0	-90.0
2	-6.261	175.227	30.000	0.0	-80.0	0.0
3	-6.625	106.029	30.000	0.0	-80.0	0.0
4	-6.625	38.668	30.000	0.0	-80.0	0.0
5	156.589	178.788	30.000	0.0	-80.0	180.0
6	153.641	110.278	30.000	0.0	-80.0	180.0
7	155.685	42.895	30.000	0.0	-80.0	180.0
8	75.058	-28.963	30.000	0.0	-80.0	90.0
9	72.019	235.069	30.000	0.0	-80.0	-90.0
10	-6.260	178.634	30.000	0.0	-80.0	0.0
11	-6.625	110.229	30.000	0.0	-80.0	0.0
12	-6.625	42.699	30.000	0.0	-80.0	0.0
13	156.585	175.173	30.000	0.0	-80.0	180.0
14	153.641	105.582	30.000	0.0	-80.0	180.0
15	155.685	38.942	30.000	0.0	-80.0	180.0
16	80.574	-28.963	30.000	0.0	-80.0	90.0

LEDLightExpert.com

Operator LEDLightExpert.com
Telephone 800-674-9420
Fax
e-Mail

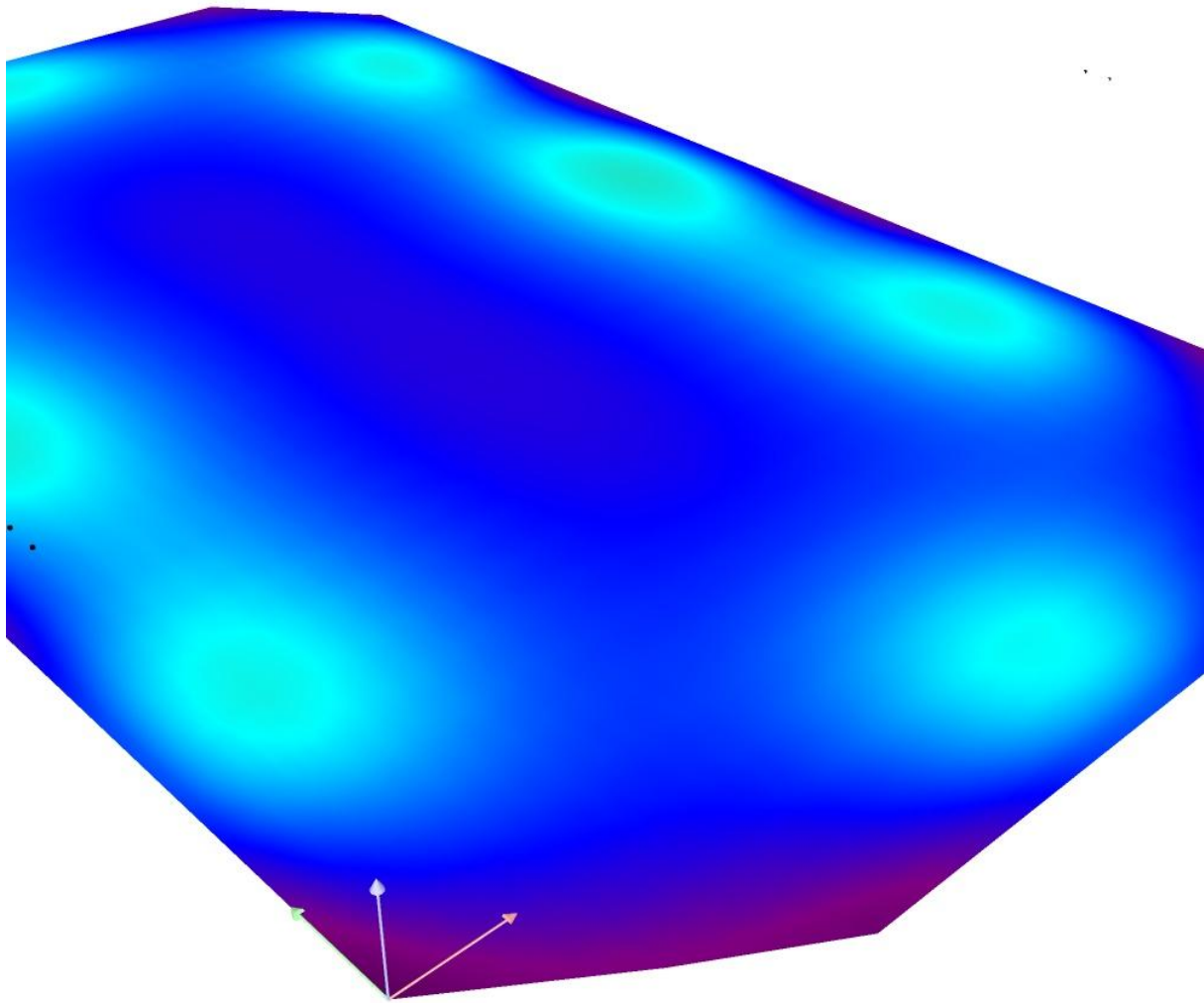
Exterior Scene 1 / 3D Rendering



LEDLightExpert.com

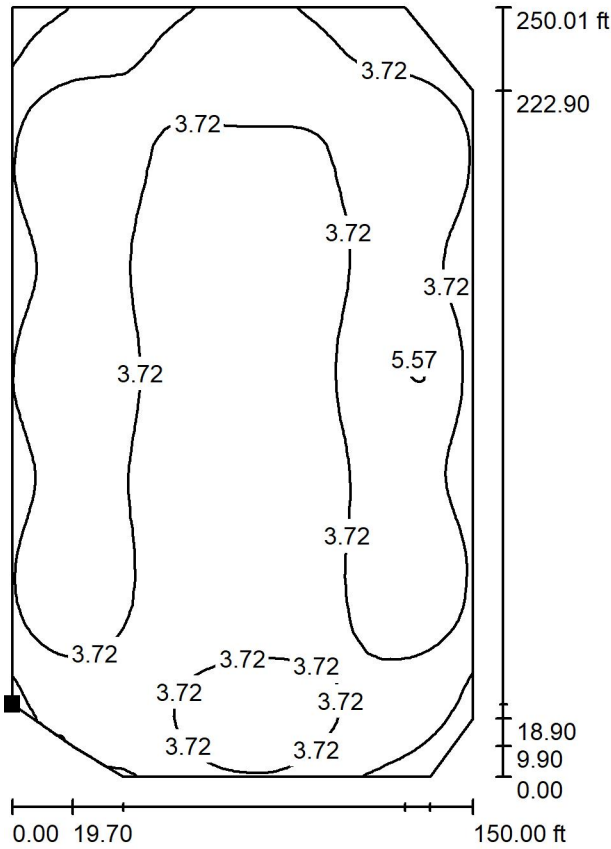
Operator LEDLightExpert.com
Telephone 800-674-9420
Fax
e-Mail

Exterior Scene 1 / False Color Rendering



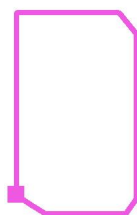
0 2.00 3.00 5.00 8.00 11.00 14.00 17.00 20.00 fc

Exterior Scene 1 / Ground Element 1 / Surface 1 / Isolines (E)



Values in Footcandles, Scale 1 : 750

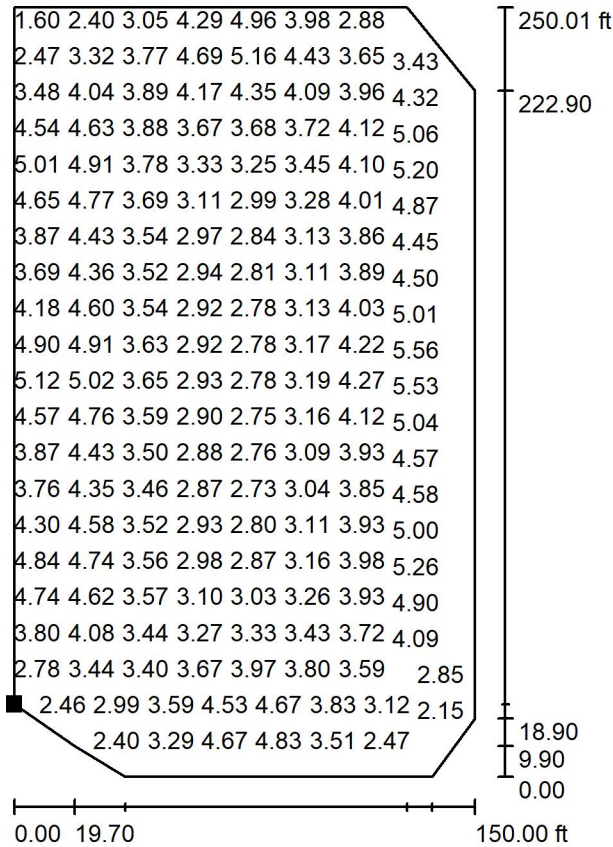
Position of surface in external scene:
 Marked point:
 (0.000 ft, 0.000 ft, 0.000 ft)



Grid: 128 x 128 Points

E_{av} [fc]	E_{min} [fc]	E_{max} [fc]	u0	E_{min} / E_{max}
3.71	0.96	5.62	0.260	0.171

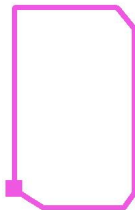
Exterior Scene 1 / Ground Element 1 / Surface 1 / Value Chart (E)



Values in Footcandles, Scale 1 : 750

Not all calculated values could be displayed.

Position of surface in external scene:
 Marked point:
 (0.000 ft, 0.000 ft, 0.000 ft)



Grid: 128 x 128 Points

E_{av} [fc]
3.71

E_{min} [fc]
0.96

E_{max} [fc]
5.62

u_0
0.260

E_{min} / E_{max}
0.171