

KALO XO SERIES

Product Spec Sheet



COMMERCIAL-GRADE

LED Can Light

Product Overview

Elevate your spaces with Kalo XO Series by Hetria Lighting. These cutting-edge LED lights feature integrated drivers, high lumen efficiency, built-in surge protection, UL listing for safety, and a 5-year warranty.

Experience innovation that's smaller, brighter, and environmentally friendly. Illuminate responsibly with Hetria Lighting!

Built to withstand the test of time, our units boast an impressive IP65 waterproof rating and are capable of enduring any harsh weather condition ensuring optimal outdoor performance. Illuminate your world with confidence and reliability.

Product Warranty



5-Year
Limited Warranty



50,000 Hrs

Applications

Libraries, , Residuals, Supermarkets, Advertising lighting, etc

Main Features

- Crystal-Clear White Light: Drawing just **22W** of input power, it delivers an impressive 1100 lumens. Dimming not available.
- Elegant & Aesthetic Fixture and Housing: Design to complement the light, crafted from aluminum with rich, enduring black powder coat for timeless beauty.
- Elegance Meets Performance: Its stylish design is matched by its impressive functionality so you can install with absolute confidence thanks to its reassuring 5-Year limited warranty.
- UL Listed: When you choose UL Certified products you are selecting Superior Quality, Enhance Safety & Unmatched Reliability.
- Integrated Driver (Driver on Board): Compact, Sleek & Lightweight! The integrated driver reduces the size, streamlines the design, and lightens the fixture making it more space-efficient for installation with a pleasing appearance.
- Advanced driver is rated for **120V exclusively.**
- Suitable for use in -20°C to 40°C
- Eco-friendly: Printed on recycled material to reduce waste.








www.hetria.com

HETRIA
MODEL PERFORMANCE LIGHTING



Model Specifications

Key Specifications

Features	Description
Wattage Selectable	 22/15/10 Watts.
Kelvin Color	 3CCT: 30K/40K/50K
LED Chip	 Bridgelux SMD2835
Lumen Performance	 84Lm/Watt. 22W=1850 Lumens
Surge Protection	 2kV Built-in for Extended Lifespan

- Dimming: TRIAC
- Efficacy: <84lm/W
- Input Voltage & Frequency: **120VAC** 50/60Hz
- IP: IP65 Waterproof Rating
- Power Factor (PF): >.94
- Total Harmonic Distortion (THD): <20%
- Color Rendering Index (CRI): >90
- Housing & Lens: PC
- Operating Temperature: -20°C to 40°C

Certifications



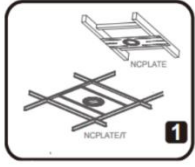
Model Specifications

Model	WATT(W)	Lumens (lm)	Efficacy (lm/W)	Mount Type	Kelvin Color (K)	Voltage (V)	CRI
Kalo XO Series Fully Tunable	22W/15W/10W	1850/1350/900	84/lm/W	Ceiling	3CCT: 30K /40K/50K	120-277VAC	>90

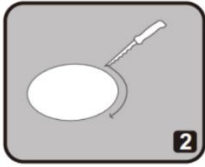
Mounting Instructions

Installation:

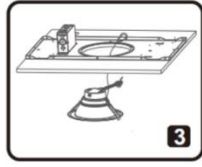
Step 1



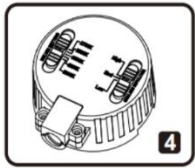
Step 2



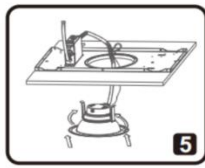
Step 3



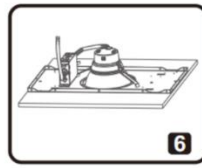
Step 4



Step 5

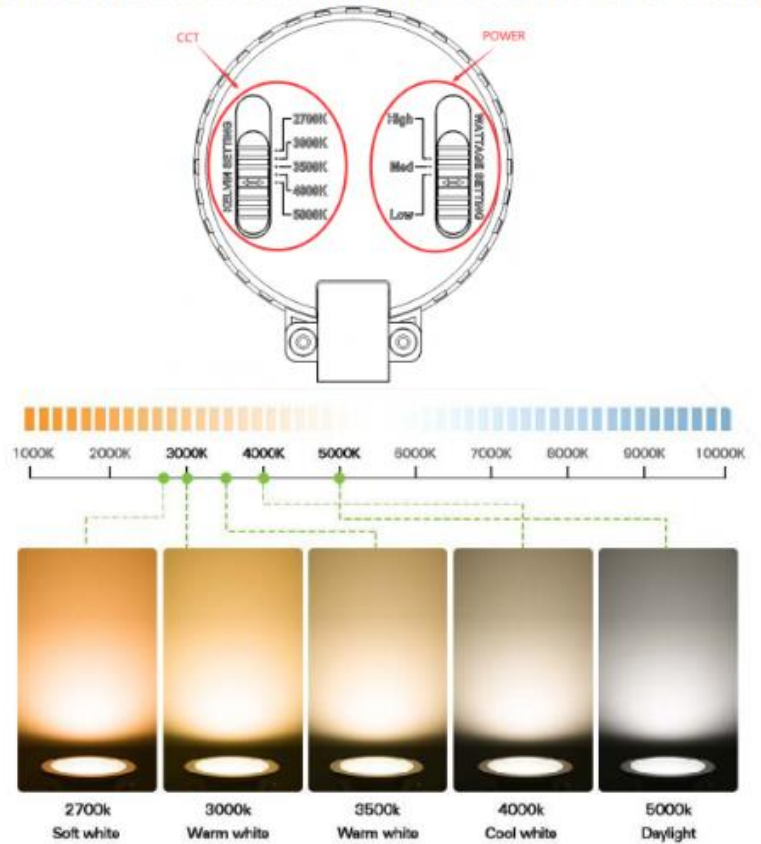


Step 6



Photometric Results – 22W Kalo XO Series Led Can Light

CHANGE COLOR TEMPERATURE WITH THE SIMPLE FLIP OF A SWITCH



Model Series	Outer Diameter (in)	Inner Diameter (in)	Width (in)	Net Weight (lbs)	Measurements Diagram						
Kalo XO Series 22W WM	8.2	5.9	4.0	.5	<table border="1"> <thead> <tr> <th>A</th> <th>B</th> <th>C</th> </tr> </thead> <tbody> <tr> <td>5.9"(150mm)</td> <td>8.2"(209mm)</td> <td>4.0"(101mm)</td> </tr> </tbody> </table>	A	B	C	5.9"(150mm)	8.2"(209mm)	4.0"(101mm)
A	B	C									
5.9"(150mm)	8.2"(209mm)	4.0"(101mm)									