

KALO RD SERIES

Product Spec Sheet



COMMERCIAL-GRADE

LED Can Light

Product Overview

Elevate your spaces with Kalo RD Series by Hetria Lighting. These cutting-edge LED lights feature integrated drivers, high lumen efficiency, built-in surge protection, UL listing for safety, and a 3-year warranty.

Experience innovation that's smaller, brighter, and environmentally friendly. Illuminate responsibly with Hetria Lighting!

Built to withstand the test of time, our units boast an impressive IP65 waterproof rating and are capable of enduring any harsh weather condition ensuring optimal outdoor performance. Illuminate your world with confidence and reliability.

Product Warranty



5-Year
Limited Warranty



50,000 Hrs

Applications






Libraries, Parks, Residentials, Supermarkets, Advertising lighting, etc

Main Features

- Crystal-Clear White Light: Drawing just **15W** of input power, it delivers an impressive 1050 lumens. Dimming not available.
- Elegant & Aesthetic Fixture and Housing: Design to complement the light, crafted from aluminum with rich, enduring black powder coat for timeless beauty.
- Elegance Meets Performance: Its stylish design is matched by its impressive functionality so you can install with absolute confidence thanks to its reassuring 5-Year limited warranty.
- UL Listed: When you choose UL Certified products you are selecting Superior Quality, Enhance Safety & Unmatched Reliability.
- Integrated Driver (Driver on Board): Compact, Sleek & Lightweight! The integrated driver reduces the size, streamlines the design, and lightens the fixture making it more space-efficient for installation with a pleasing appearance.
- Advanced driver is rated for **120V exclusively.**
- Suitable for use in -20°C to 40°C
- Eco-friendly: Printed on recycled material to reduce waste.



Model Specifications

Features	Description
Input Wattage	 15 Watts.
Kelvin Color	 3CCT: 30K/40K/50K
LED Chip	 Bridgelux SMD2835
Lumen Performance	 70Lm/Watt. 15W=1050 Lumens
Surge Protection	 2kV Built-in for Extended Lifespan

Key Specifications

- Dimming: TRIAC
- Efficacy: <70lm/W
- Input Voltage & Frequency: **120VAC** 50/60Hz
- IP: IP65 Waterproof Rating
- Power Factor (PF): > .94
- Total Harmonic Distortion (THD): <20%
- Color Rendering Index (CRI): >90
- Housing & Lens: PC
- Operating Temperature: -20°C to 40°C

Certifications

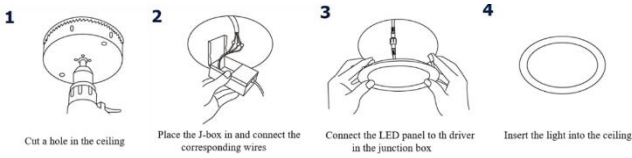


Model Specifications

Model	WATT(W)	Lumens (lm)	Efficacy (lm/W)	Mount Type	Kelvin Color (K)	Voltage (V)	CRI
Kalo RD Series 3CCT	15W	1050	70/lm/W	Ceiling	3CCT: 30K /40K/50K	120-277VAC	>90

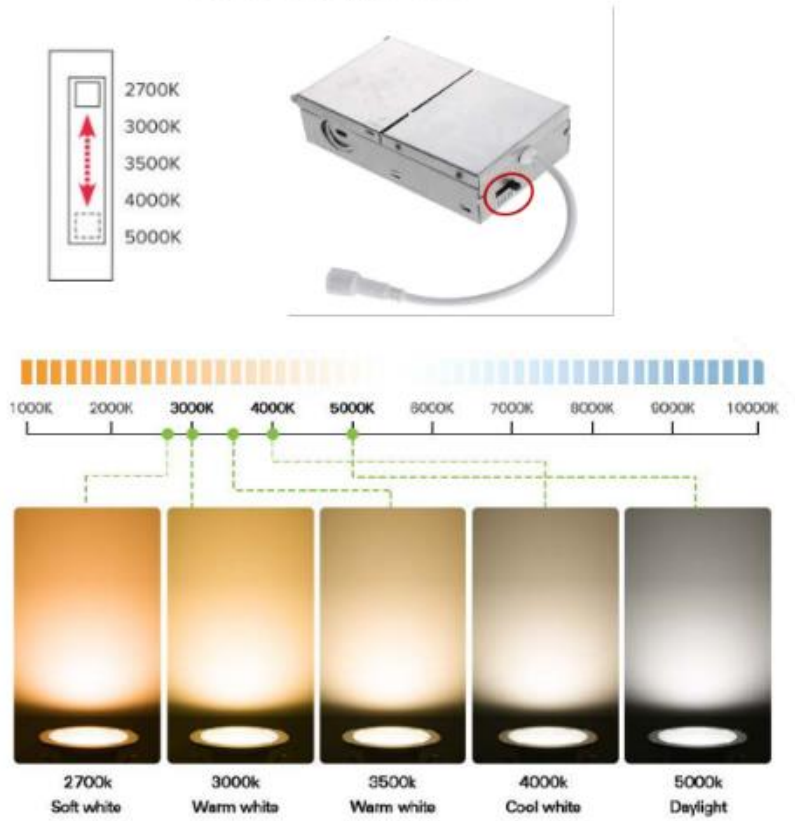
Mounting Instructions

Installation:



Photometric Results – 15W Kalo RD Series Led Can Light

CHANGE COLOR TEMPERATURE WITH THE SIMPLE FLIP OF A SWITCH



Model Series	Outer Diameter (in)	Inner Diameter (in)	Width (in)	Net Weight (lbs)	Measurements Diagram
Kalo RD Series 15W WM	6.57	4.96	.62	.6	<p>The diagram shows three views of the light fixture: a top view with an outer diameter of 6.57 inches and an inner diameter of 4.96 inches; a side view showing a height of 1.55 inches; and a perspective view showing a depth of 1.67 inches and a mounting arm length of 191.05 inches. Other dimensions include 126 inches for the width of the mounting arm, 167 inches for the height of the mounting arm, 350 inches for the length of the mounting arm, 15.2 inches for the width of the mounting arm, 69 inches for the height of the mounting arm, 110 inches for the length of the mounting arm, and 35 inches for the width of the mounting arm.</p>