

## **Baseball Diamond 6 poles - 38qty of 750w SP**

Baseball Diamond 6 poles - 38 quantity of the 750 watt RuggedGrade Stadium Pro Series Light

Partner for Contact: \*Removed\*  
Order No.:  
Company: \*Removed\*  
Customer No.:

Date: 02 / 18 / 2019  
Operator: LEDLightExpert.com

www.LEDLightExpert.com

Operator LEDLightExpert.com  
Telephone 800-674-9420  
Fax  
e-Mail sales@LEDLightExpert.com

## Table of contents

<b>Baseball Diamond 6 poles - 38qty of 750w SP</b>	
Project Cover	1
Table of contents	2
<b>SP01-750W</b>	
Luminaire Data Sheet	3
<b>Exterior Scene 1</b>	
Luminaire parts list	4
Luminaires (layout plan)	5
Luminaires (coordinates list)	6
3D Rendering	8
False Color Rendering	9
<b>Exterior Surfaces</b>	
<b>Ground Element 1</b>	
<b>Surface 1</b>	
Isolines (E)	10
Value Chart (E)	11

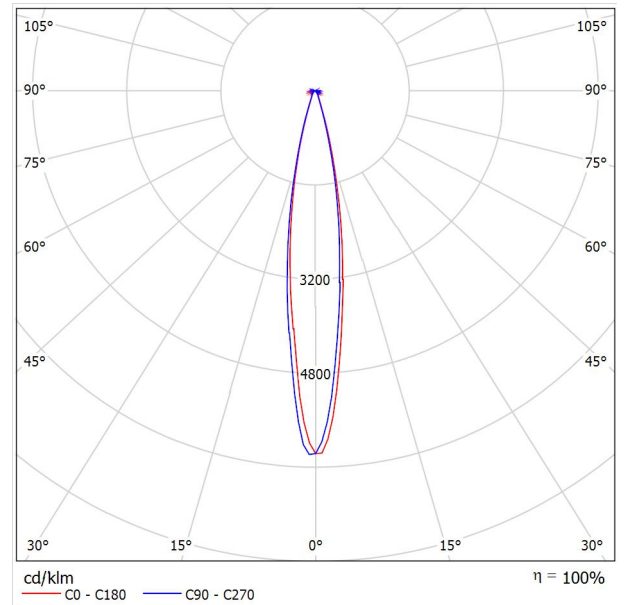
www.LEDLightExpert.com

Operator LEDLightExpert.com  
Telephone 800-674-9420  
Fax  
e-Mail sales@LEDLightExpert.com

## SP01-750W / Luminaire Data Sheet

Luminous emittance 1:

See our luminaire catalog for an image of the luminaire.



Luminaire classification according to CIE: 100  
CIE flux code: 83 91 96 100 100

Due to missing symmetry properties, no UGR table can be displayed for this luminaire.

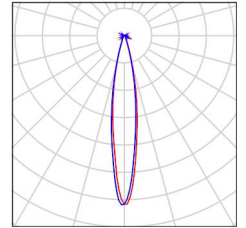
www.LEDLightExpert.com

Operator LEDLightExpert.com  
Telephone 800-674-9420  
Fax  
e-Mail sales@LEDLightExpert.com

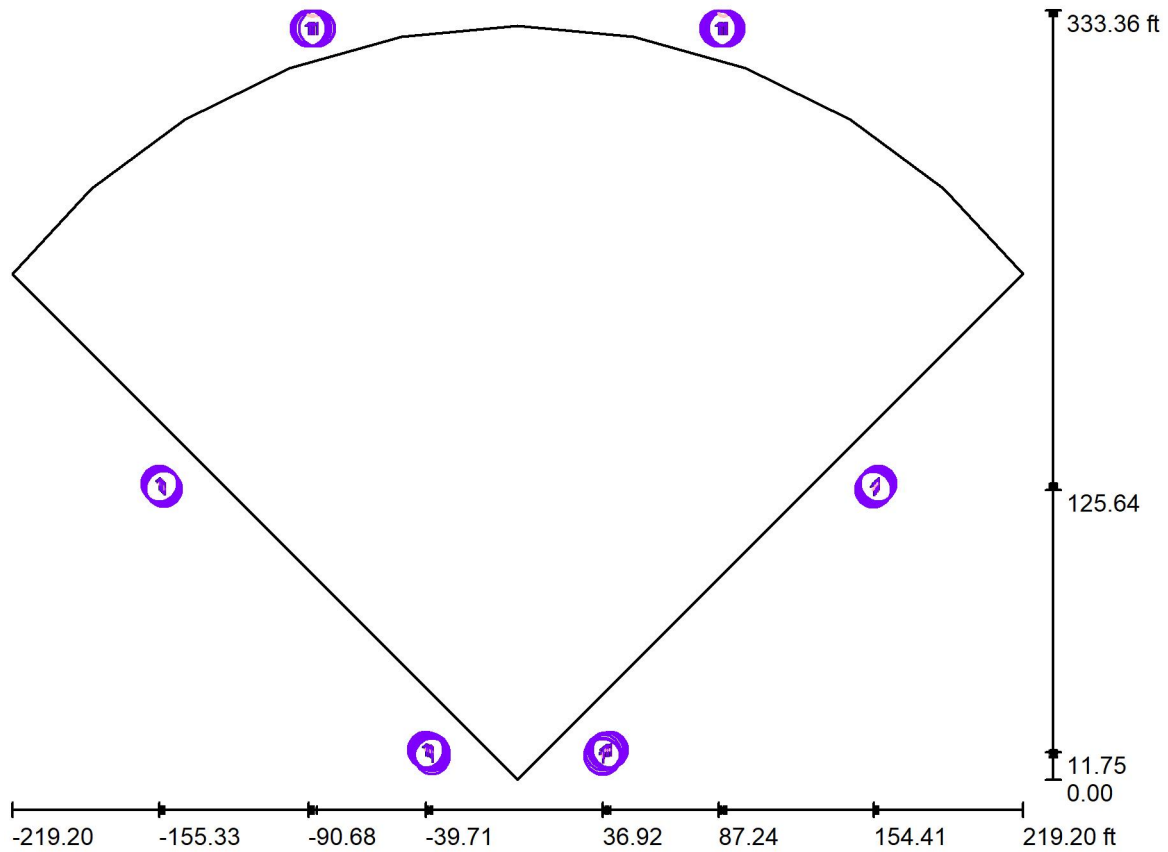
## Exterior Scene 1 / Luminaire parts list

38 Pieces SP01-750W  
Article No.:  
Luminous flux (Luminaire): 103115 lm  
Luminous flux (Lamps): 103264 lm  
Luminaire Wattage: 747.8 W  
Luminaire classification according to CIE: 100  
CIE flux code: 83 91 96 100 100  
Fitting: 1 x User defined (Correction Factor 1.000).

See our luminaire catalog for an image of the luminaire.



**Exterior Scene 1 / Luminaires (layout plan)**



Scale 1 : 1000

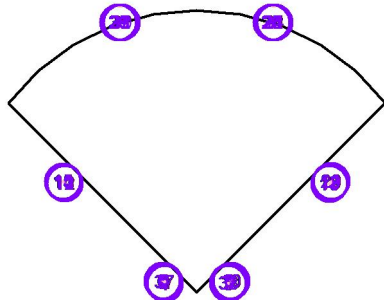
**Luminaire Parts List**

No.	Pieces	Designation
1	38	SP01-750W

**Exterior Scene 1 / Luminaires (coordinates list)**

**SP01-750W**

103115 lm, 747.8 W, 1 x 1 x User defined (Correction Factor 1.000).



No.	Position [ft]			Rotation [°]		
	X	Y	Z	X	Y	Z
1	-36.959	10.089	73.000	0.0	-53.0	40.0
2	-37.011	11.291	73.000	0.0	-55.0	65.0
3	37.078	9.761	73.000	0.0	-50.0	140.0
4	-37.890	12.339	73.000	0.0	-55.0	90.0
5	-38.890	12.606	73.000	0.0	-58.0	110.0
6	-39.706	12.818	73.000	0.0	-65.0	100.0
7	37.252	11.754	73.000	0.0	-65.0	110.0
8	38.373	12.538	73.000	0.0	-65.0	90.0
9	39.238	12.576	73.000	0.0	-65.0	70.0
10	40.247	12.822	73.000	0.0	-60.0	75.0
11	-153.749	126.433	73.000	0.0	-60.0	30.0
12	-153.318	125.904	73.000	0.0	-65.0	15.0
13	-154.191	127.033	73.000	0.0	-60.0	50.0
14	-154.742	127.528	73.000	0.0	-68.0	70.0
15	-155.329	128.115	73.000	0.0	-58.0	90.0
16	154.415	125.640	73.000	0.0	-63.0	160.0
17	154.994	126.243	73.000	0.0	-63.0	140.0
18	155.441	126.960	73.000	0.0	-63.0	120.0
19	155.930	127.459	73.000	0.0	-60.0	100.0
20	156.586	128.184	73.000	0.0	-65.0	150.0
21	90.760	331.717	73.000	0.0	-63.0	-50.0
22	89.402	331.010	73.000	0.0	-63.0	-65.0
23	88.228	331.270	73.000	0.0	-65.0	-83.0
24	87.589	331.855	73.000	0.0	-60.0	-120.0
25	87.258	332.655	73.000	0.0	-60.0	-140.0
26	87.235	333.177	73.000	0.0	-60.0	-160.0
27	-89.228	331.002	73.000	0.0	-65.0	-95.0
28	-90.375	331.364	73.000	0.0	-68.0	-110.0

www.LEDLightExpert.com

Operator LEDLightExpert.com  
 Telephone 800-674-9420  
 Fax  
 e-Mail sales@LEDLightExpert.com

### Exterior Scene 1 / Luminaires (coordinates list)

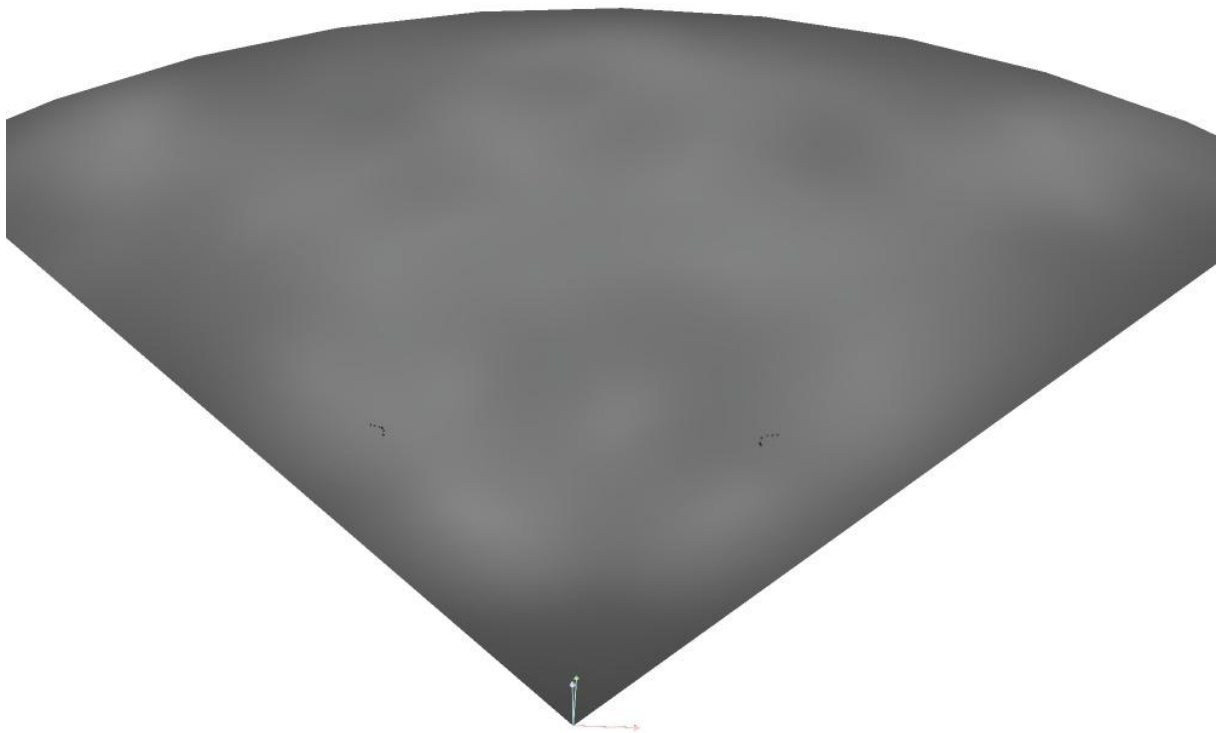
No.	Position [ft]			Rotation [°]		
	X	Y	Z	X	Y	Z
29	-90.508	331.478	73.000	0.0	-65.0	-130.0
30	-86.914	331.364	73.000	0.0	-68.0	-20.0
31	-87.040	331.235	73.000	0.0	-65.0	-20.0
32	-88.544	331.123	73.000	0.0	-60.0	-60.0
33	-90.073	331.190	73.000	0.0	-68.0	-110.0
34	90.375	331.364	73.000	0.0	-65.0	-40.0
35	87.426	332.582	73.000	0.0	-70.0	-160.0
36	-90.678	331.530	73.000	0.0	-68.0	-130.0
37	-37.476	12.021	73.000	0.0	-70.0	40.0
38	36.921	10.259	73.000	0.0	-75.0	140.0



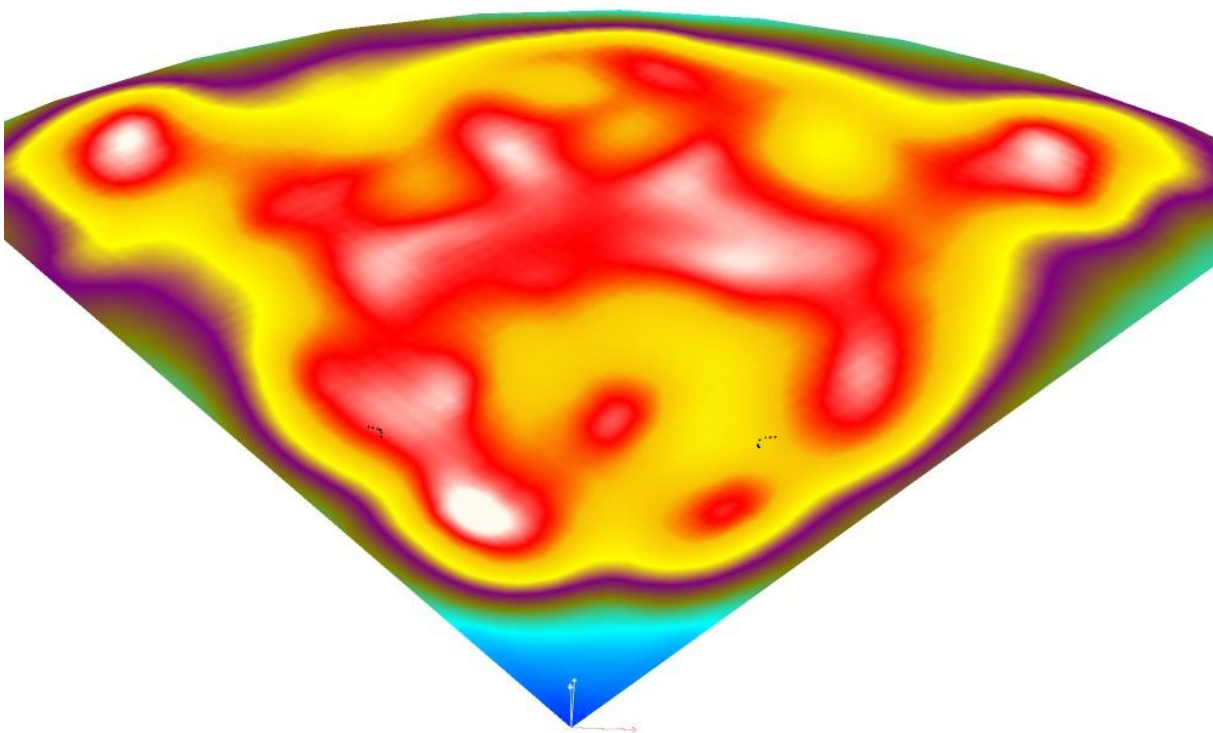
www.LEDLightExpert.com

Operator LEDLightExpert.com  
Telephone 800-674-9420  
Fax  
e-Mail sales@LEDLightExpert.com

## Exterior Scene 1 / 3D Rendering

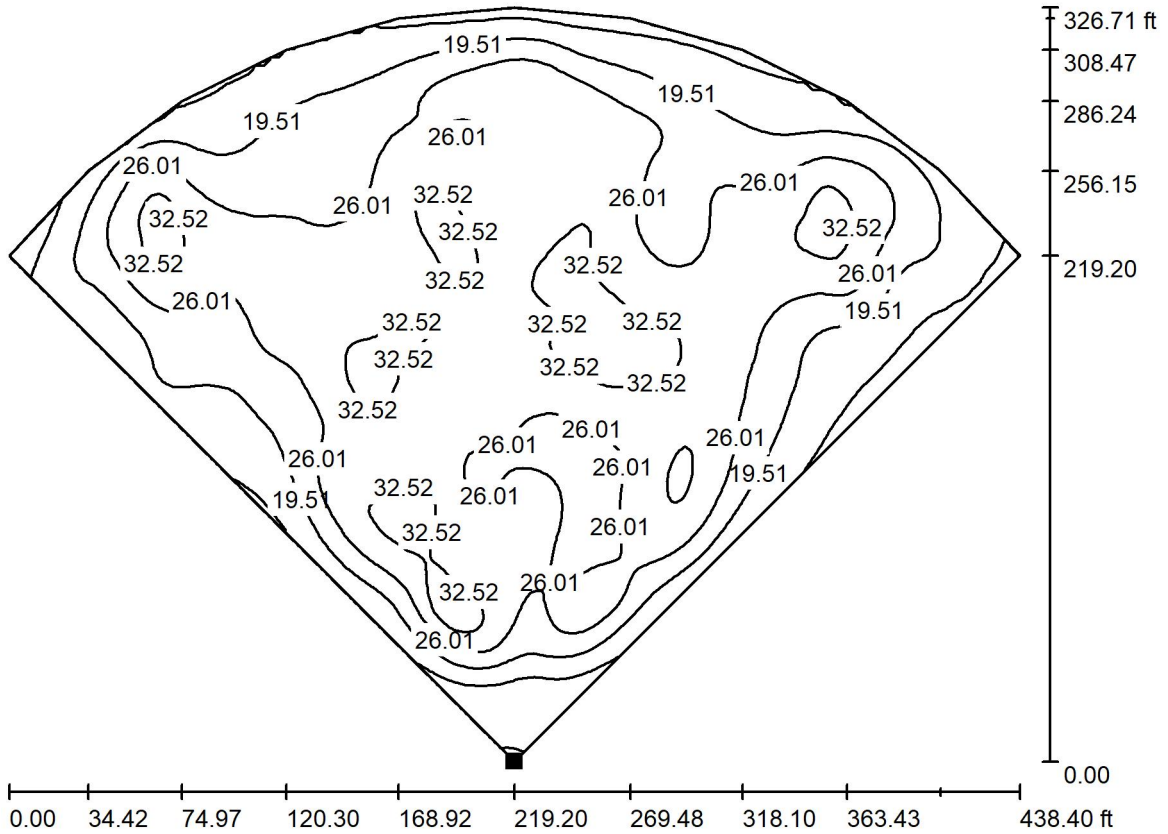


### Exterior Scene 1 / False Color Rendering



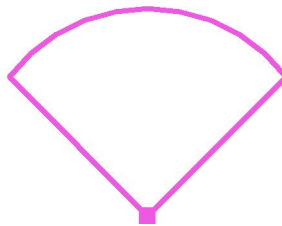
0      5.00      10.00      14.00      18.00      22.00      27.00      31.00      35.00      fc

**Exterior Scene 1 / Ground Element 1 / Surface 1 / Isolines (E)**



Values in Footcandles, Scale 1 : 1000

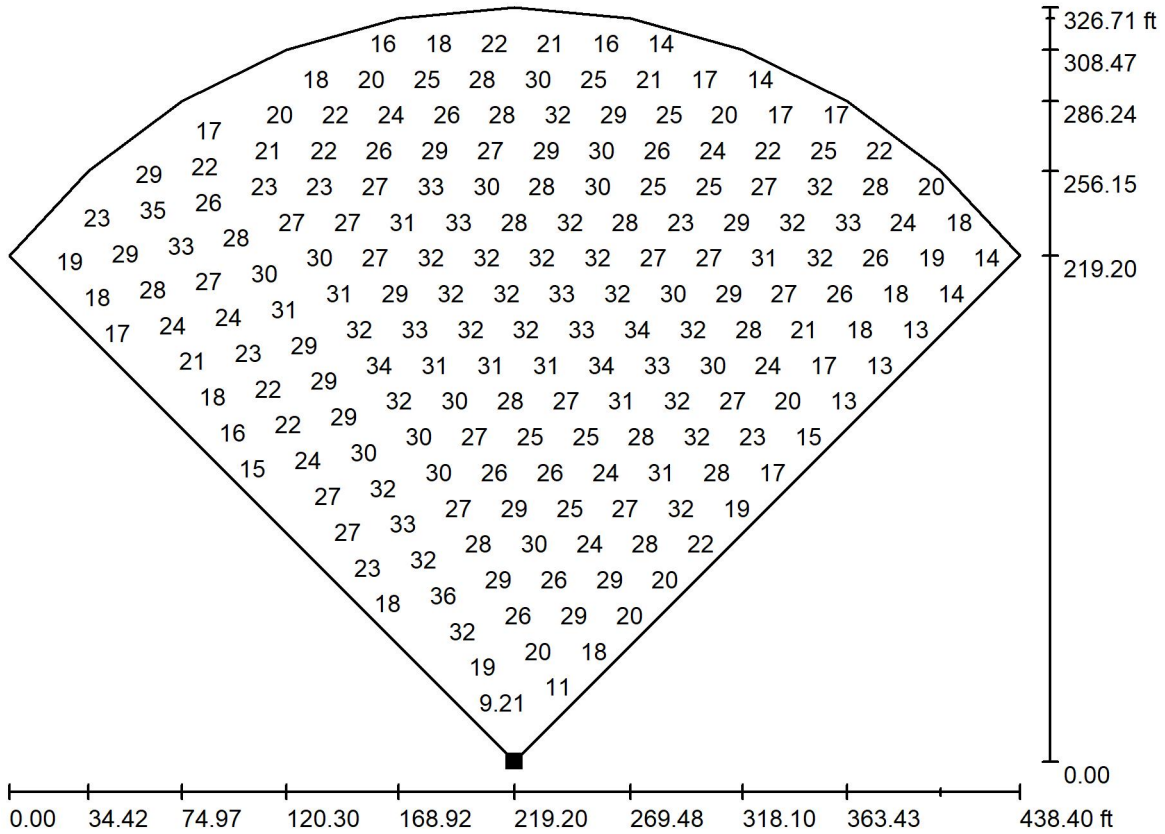
Position of surface in external scene:  
 Marked point:  
 (0.000 ft, 0.000 ft, 0.000 ft)



Grid: 128 x 128 Points

$E_{av}$ [fc]	$E_{min}$ [fc]	$E_{max}$ [fc]	u0	$E_{min} / E_{max}$
25	6.13	37	0.246	0.165

**Exterior Scene 1 / Ground Element 1 / Surface 1 / Value Chart (E)**

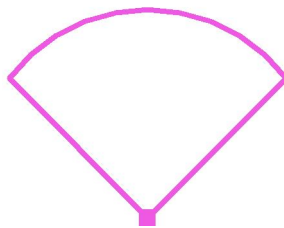


Values in Footcandles, Scale 1 : 1000

Not all calculated values could be displayed.

Position of surface in external scene:

Marked point:  
 (0.000 ft, 0.000 ft, 0.000 ft)



Grid: 128 x 128 Points

$E_{av}$ [fc]	$E_{min}$ [fc]	$E_{max}$ [fc]	u0	$E_{min} / E_{max}$
25	6.13	37	0.246	0.165