

Scale: 1 inch= 35.00 Ft.

LIGHTING DETAILS:

Luminaire Schedule						
Label	Symbol	Qty	LLF	Description	Luminaire Lumens	Luminaire Watts
F1		12	1.000	RGL-RWP02-120W	14513	113.34

Calculation Summary						
Label	CalcType	Units	Avg	Max	Min	Max/Min
Object_2_Top_1	Illuminance	Fc	2.15	10.1	0.0	N.A.

DESIGN NOTES:

- 1.
 - 2.
 - 3.
 - 4.
- Note on this Design:
This report makes no representations in regard to Lighting Design or Specification, rather it attempts to accurately reflect the photometric results of a design, as approved by others.

This analysis is a mathematical model and can be only as accurate as is permitted by the third-party software and the IES standards used. All digital CAD data appear to be accurate, however, this apparent accuracy is an artifact of the techniques used to generate it and is in no way intended to imply accuracy in the real world.

There are many factors that will impact the actual performance of Lighting in the constructed space, including: the accuracy of the original source (.ies) files supplied by the manufacturer, input voltage ballast variances, actual finish values in the constructed environment, manufacturing variations in both the source (lamp) and the luminaire, final luminaire placement, obstructions, and installation quality. Further, field measurement itself is subject to errors arising from measuring methods and/or technology selected, and the knowledge/ability of the measuring party. While the creator of this lighting study makes every effort to ensure accuracy, they cannot be held liable for any errors. The recipient of this lighting study understands and accepts that the likelihood of scaling error increases when no .DWG file or other properly-dimensioned drawing is provided to the designer.

Reflective Values have a significant effect on light levels, the end-user of the document should confirm these values before accepting the results of any photometric report. The managing contractor/architect/engineer is responsible for ensuring compliance to all relevant lighting ordinance(s) and energy codes required on this project.

SPEC SHEET & RENDERS

120W Rotate IV | LED WALL PACK LIGHT

PRODUCT DESCRIPTION

Rotating Design - 120 Watt LED Wall Pack Light - 17,500 Lumens - High Efficiency 130 Lumens to Watt - Each Fixture Rotates Individually

UL **DLC**

DLC # RGL-RW02-120W

PRODUCT FEATURES & COMMON USE APPLICATIONS

- UL, cUL, and DLC 5.1 certificate.
- BridgeLux 3030, High CRI
- 90° internal driver
- Output constant current (power can be adjusted)
- Input voltage 120-277VAC
- No UV or IR in the beam
- Easy to install and operate
- Energy saving, long lifespan
- Light is soft and uniform, safe to eyes
- Instant start, NO Flickering, NO Tuning

PRODUCT DIMENSIONS

120W Rotate IV | LED WALL PACK LIGHT

PRODUCT TECHNICAL SPECIFICATIONS

Input Power (Estimate)	120W	Wattage Adjustment	120W/100W/80W/60W
LED	3030	Beam Angle	120°
Lumen (Estimate)	17,500	Beam Angle (30°)	1,700/1,000/600/400
Lumen (Estimate)	17,500	Beam Angle (45°)	1,700/1,000/600/400
Efficiency (Estimate)	145lm/w	Beam Angle (60°)	1,700/1,000/600/400
Color Consistency	± 0.005	Beam Angle (75°)	1,700/1,000/600/400
CR	>90	Beam Angle (90°)	1,700/1,000/600/400
Color Rendering Index	>90	Beam Angle (105°)	1,700/1,000/600/400
Distribution Pattern	Type 8	Beam Angle (120°)	1,700/1,000/600/400
Beam Angle (30°)	1,700/1,000/600/400	Beam Angle (135°)	1,700/1,000/600/400
Input Voltage and Frequency	120-277VAC, 50/60Hz	Beam Angle (150°)	1,700/1,000/600/400
IP (Estimate)	IP65	Beam Angle (165°)	1,700/1,000/600/400
LED Temperature (°C)	65/55	Beam Angle (180°)	1,700/1,000/600/400
IP65	65/55	Beam Angle (195°)	1,700/1,000/600/400
Driver Brand	BridgeLux	Beam Angle (210°)	1,700/1,000/600/400
Driver Model	BridgeLux	Beam Angle (225°)	1,700/1,000/600/400
Driver Input Protection	1.5 Amps (1.5A)	Beam Angle (240°)	1,700/1,000/600/400
Driver Output Protection	0.5A	Beam Angle (255°)	1,700/1,000/600/400
LED Brand	BridgeLux	Beam Angle (270°)	1,700/1,000/600/400
LED Type	3030	Beam Angle (285°)	1,700/1,000/600/400
LED Qty	12	Beam Angle (300°)	1,700/1,000/600/400
Housing Color	Black, White, or Customized	Beam Angle (315°)	1,700/1,000/600/400
Mounting Bracket	Mounting Bracket or Customized	Beam Angle (330°)	1,700/1,000/600/400
Mounting Temperature	40°C to 50°C, Sensor: 20°C to 50°C	Beam Angle (345°)	1,700/1,000/600/400
Mounting Humidity	20% to 90% RH	Beam Angle (360°)	1,700/1,000/600/400
Storage Humidity	10% to 90% RH	Beam Angle (375°)	1,700/1,000/600/400
Warranty	5 years warranty	Beam Angle (390°)	1,700/1,000/600/400

PRODUCT OPTIONS & ACCESSORIES

120W Rotate IV | LED WALL PACK LIGHT

PHOTOMETRICS & DLC PRODUCT SPEC

Luminaire Property

Luminaire Manufacturer: **LEDLightExpert**
Luminaire Category: **LED Wall Pack Light**
Lamp Description: **LED Wall Pack Light**
Number of Lamps: **12**
Lumens per Lamp: **1451.3**
Luminaire Length (mm): **152.4**
Luminaire Width (mm): **152.4**
Luminaire Height (mm): **152.4**
Current: **1.05 A**
Power Factor: **0.996**

Photometric Results

IES Classification: **Type 8**
Total Rated Lamp Lumens: **15213.2 lm**
Measurement Flux: **15213.2 lm**
Efficiency: **145lm/w**
Downward Ratio: **97%**
Upward Ratio: **1%**
C0/C90 Intensity: **52.24 cd**
Max. Intensity: **7127.67 cd**
Hgt. of Max. Intensity: **100.00 mm**
Beam Angle(C0/C90): **180.00°**
Beam Angle(C15/C15): **93.2, 93.6, 108.4, 107.9**

Photometric Data:

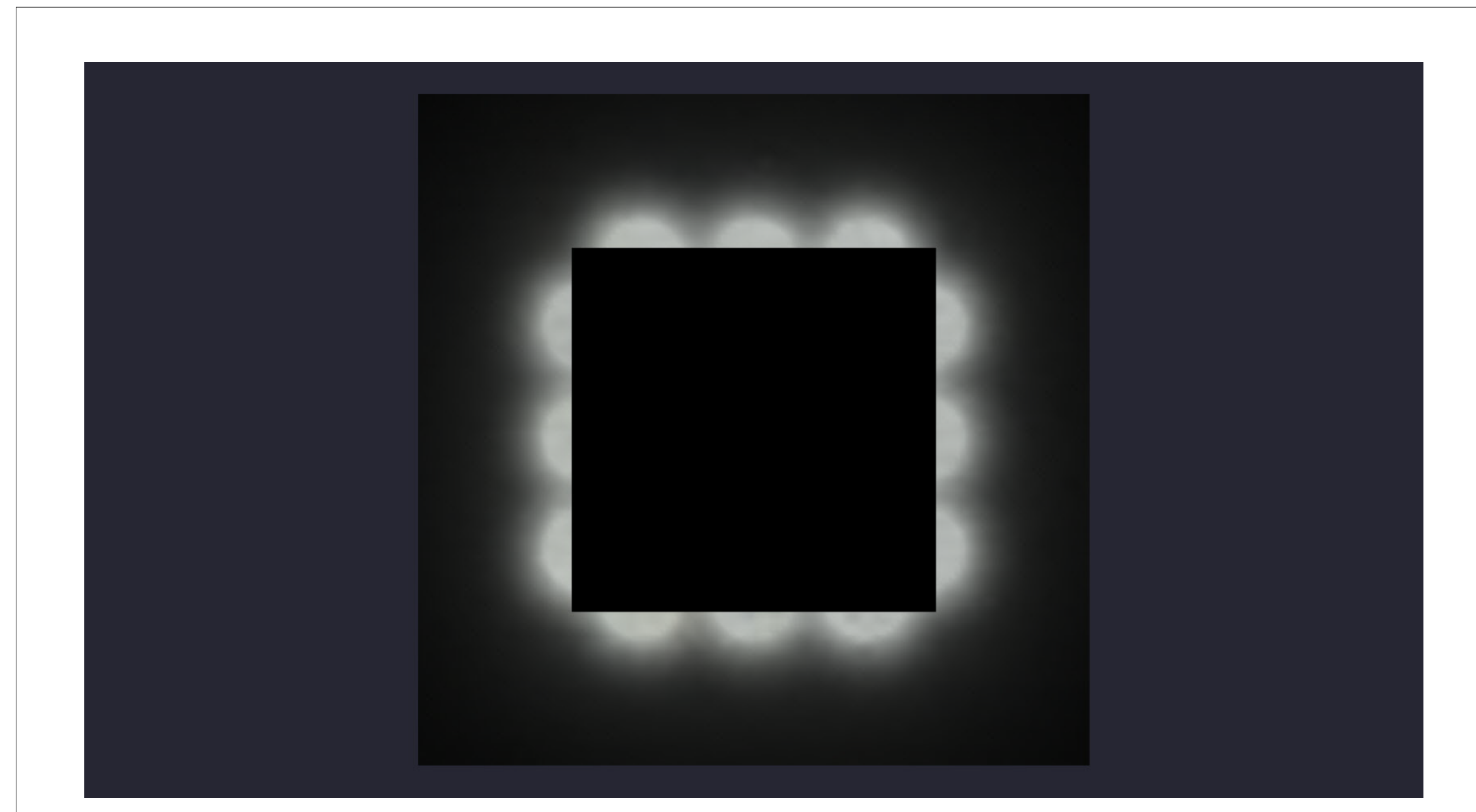
Beam Angle	Intensity (cd)
0°	7127.67
15°	1521.32
30°	304.26
45°	101.42
60°	33.81
75°	10.94
90°	3.65
105°	1.18
120°	0.39
135°	0.13
150°	0.04
165°	0.01
180°	0.00

The Average Illuminance Effective Figure

Beam Angle (30°): 1,700/1,000/600/400
Beam Angle (45°): 1,700/1,000/600/400
Beam Angle (60°): 1,700/1,000/600/400
Beam Angle (75°): 1,700/1,000/600/400
Beam Angle (90°): 1,700/1,000/600/400
Beam Angle (105°): 1,700/1,000/600/400
Beam Angle (120°): 1,700/1,000/600/400
Beam Angle (135°): 1,700/1,000/600/400
Beam Angle (150°): 1,700/1,000/600/400
Beam Angle (165°): 1,700/1,000/600/400
Beam Angle (180°): 1,700/1,000/600/400

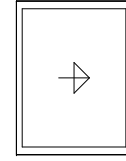
Legend:
- C0-C90: Beam Angle
- C15-C15: Beam Angle
- C30-C30: Beam Angle
- C45-C45: Beam Angle
- C60-C60: Beam Angle
- C75-C75: Beam Angle
- C90-C90: Beam Angle

TYPE F1

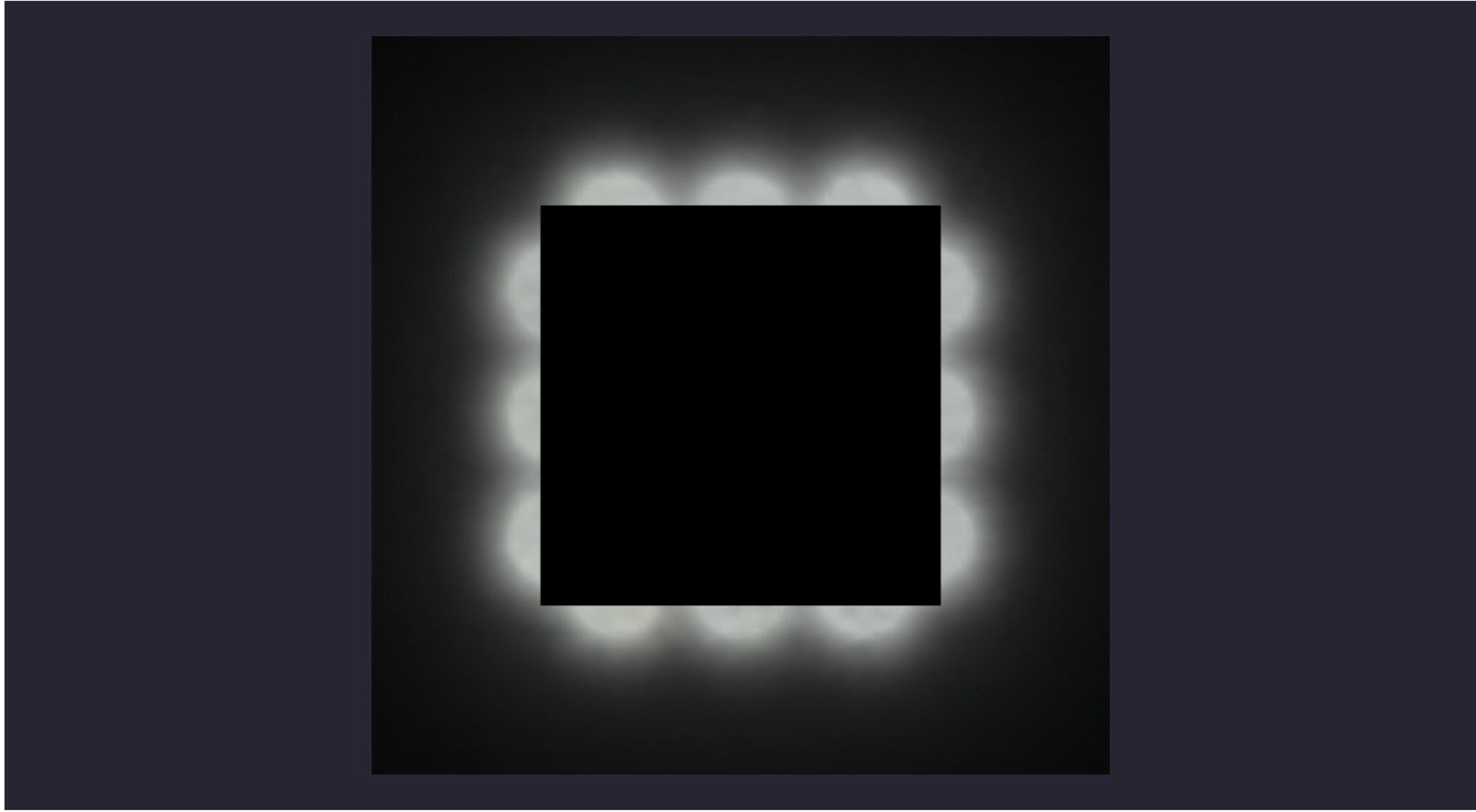


PLAN VIEW

LIGHTING DETAILS:

Luminaire Schedule						
Label	Symbol	Qty	LLF	Description	Luminaire Lumens	Luminaire Watts
F1		12	1.000	RGL-RWP02-120W	14513	113.34

Calculation Summary						
Label	CalcType	Units	Avg	Max	Min	Max/Min
Object_2_Top_1	Illuminance	Fc	2.15	10.1	0.0	N.A.

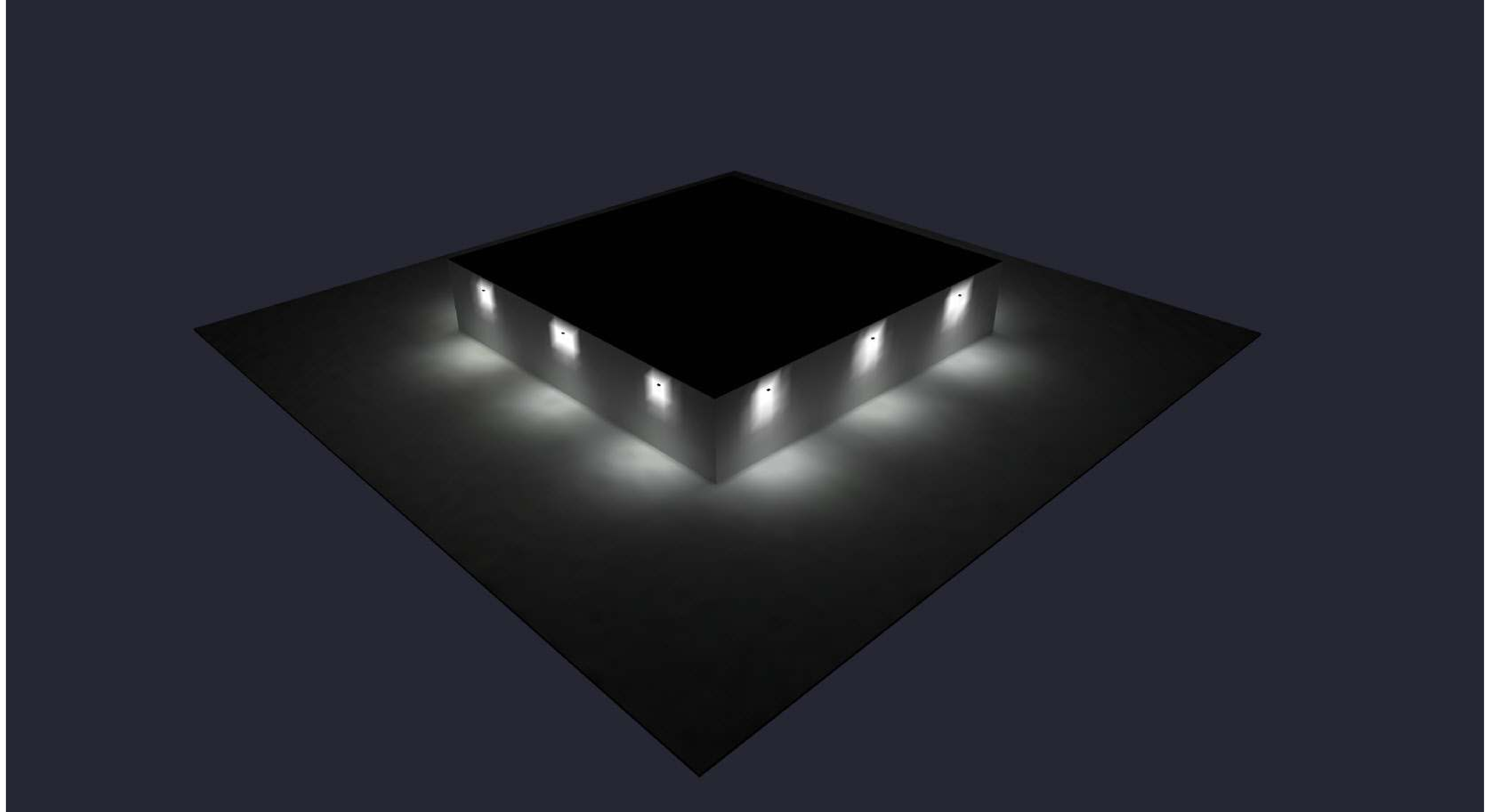


Date:9/11/2025

Drawn By:

Revision #:

120 WATT ROTATE

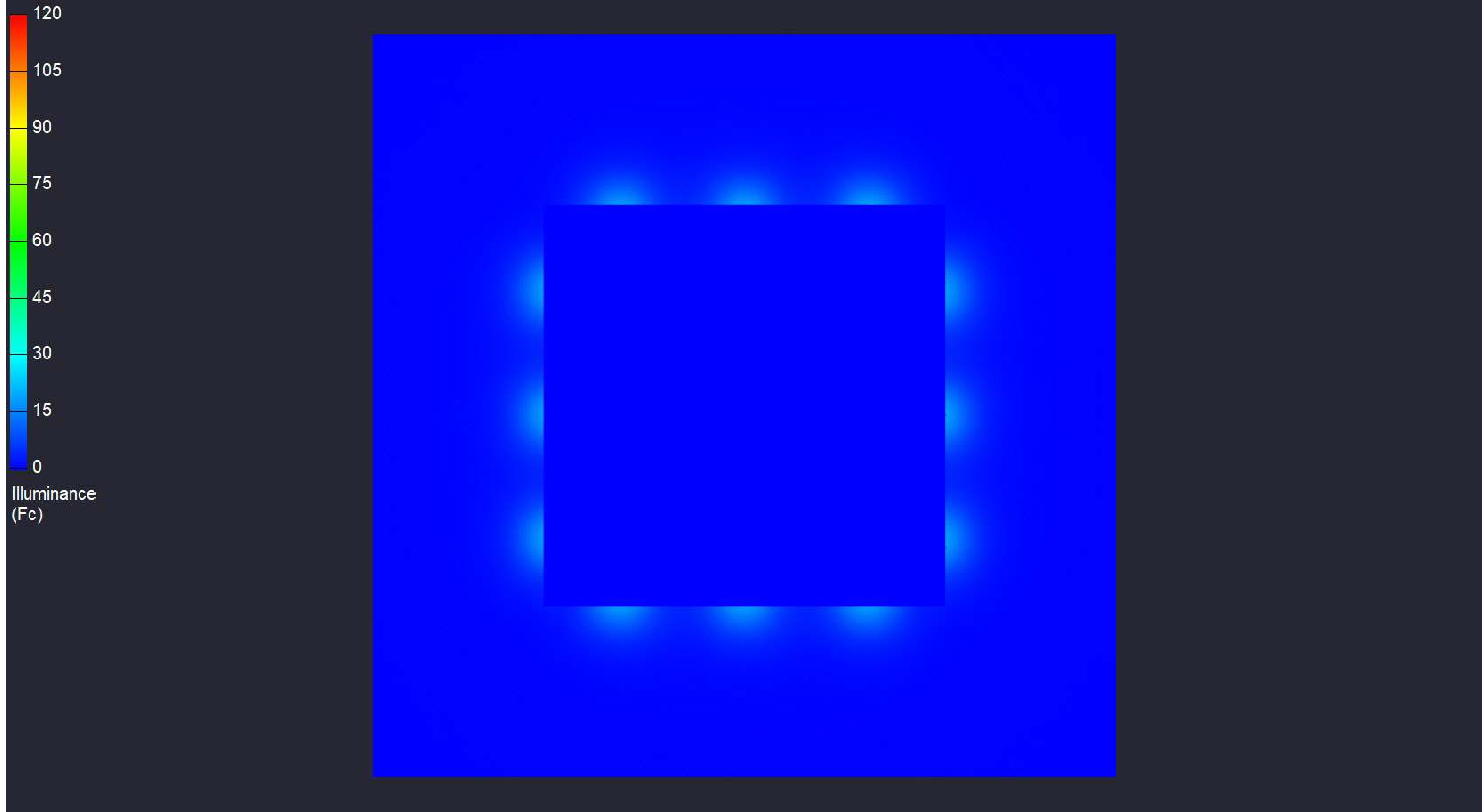


120 WATT ROTATE

Date:9/11/2025

Drawn By:

Revision #:



120 WATT ROTATE

Date:9/11/2025

Drawn By:

Revision #: