

Scale: 1 inch= 24 Ft.

LIGHTING DETAILS:

Luminaire Schedule							
Label	Symbol	Qty	LLF	Description	Luminaire Lumens	Luminaire Watts	Tag
F1		16	0.500	500W 90 DEGREE	68914	515	52-362
F2		16	0.500	500W 40 DEGREE	65590	480.59	52-362

Calculation Summary						
Label	CalcType	Units	Avg	Max	Min	Max/Min
CalcPts_1	Illuminance	Fc	14.15	26.7	5.3	5.04

DESIGN NOTES:

1. TOP LENS 40 DEGREE
2. BOTTOM LENS 90 DEGREE
3. 30' POLE
- 4.

Note on this Design:
This report makes no representations in regard to Lighting Design or Specification, rather it attempts to accurately reflect the photometric results of a design, as approved by others.

This analysis is a mathematical model and can be only as accurate as is permitted by the third-party software and the IES standards used. All digital CAD data appear to be accurate, however, this apparent accuracy is an artifact of the techniques used to generate it and is in no way intended to imply accuracy in the real world.

There are many factors that will impact the actual performance of Lighting in the constructed space, including: the accuracy of the original source (.ies) files supplied by the manufacturer, input voltage ballast variances, actual finish values in the constructed environment, manufacturing variations in both the source (lamp) and the luminaire, final luminaire placement, obstructions, and installation quality. Further, field measurement itself is subject to errors arising from measuring methods and/or technology selected, and the knowledge/ability of the measuring party. While the creator of this lighting study makes every effort to ensure accuracy, they cannot be held liable for any errors. The recipient of this lighting study understands and accepts that the likelihood of scaling error increases when no .DWG file or other properly-dimensioned drawing is provided to the designer.

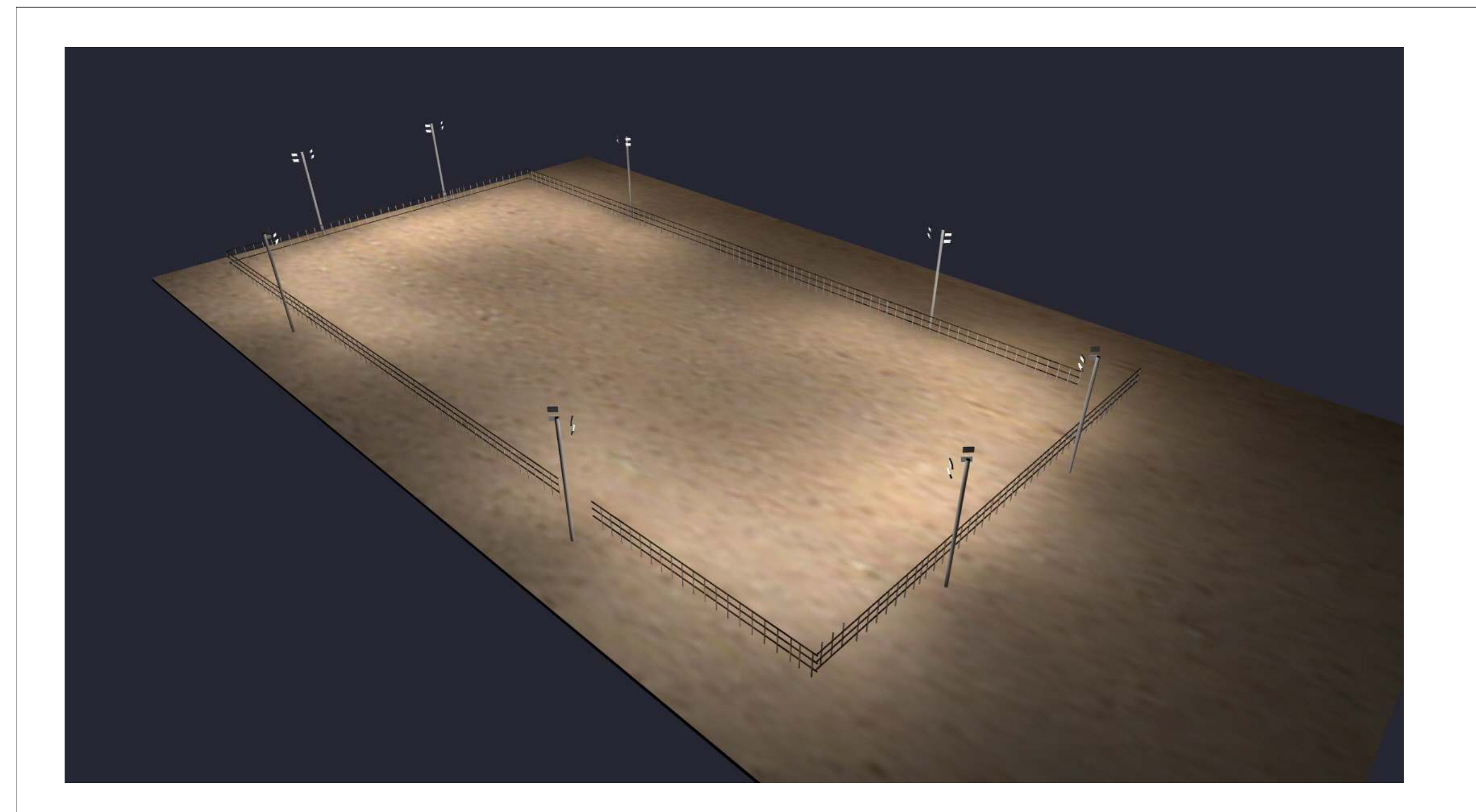
Reflective Values have a significant effect on light levels, the end-user of the document should confirm these values before accepting the results of any photometric report. The managing contractor/ architect/engineer is responsible for ensuring compliance to all relevant lighting ordinance(s) and energy codes required on this project.

SPEC SHEET & RENDERS

TYPE F1-F2

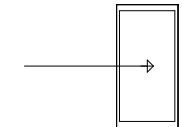
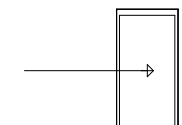
TYPE B

TYPE C



PLAN VIEW

LIGHTING DETAILS:

Luminaire Schedule							
Label	Symbol	Qty	LLF	Description	Luminaire	Luminaire	Tag
					Lumens	Watts	
F1		16	0.500	500W 90 DEGREE	68914	515	52-362
F2		16	0.500	500W 40 DEGREE	65590	480.59	52-362

Calculation Summary						
Label	CalcType	Units	Avg	Max	Min	Max/Min
CalcPts_1	Illuminance	Fc	14.15	26.7	5.3	5.04

DESIGN NOTES:

1. TOP LENS 40 DEGREE
2. BOTTOM LENS 90 DEGREE
3. 30' POLE
- 4.

Note on this Design:
This report makes no representations in regard to Lighting Design or Specification, rather it attempts to accurately reflect the photometric results of a design, as approved by others.

This analysis is a mathematical model and can be only as accurate as is permitted by the third-party software and the IES standards used. All digital CAD data appear to be accurate, however, this apparent accuracy is an artifact of the techniques used to generate it and is in no way intended to imply accuracy in the real world.

There are many factors that will impact the actual performance of Lighting in the constructed space, including: the accuracy of the original source (.ies) files supplied by the manufacturer, input voltage ballast variances, actual finish values in the constructed environment, manufacturing variations in both the source (lamp) and the luminaire, final luminaire placement, obstructions, and installation quality. Further, field measurement itself is subject to errors arising from measuring methods and/or technology selected, and the knowledge/ability of the measuring party. While the creator of this lighting study makes every effort to ensure accuracy, they cannot be held liable for any errors. The recipient of this lighting study understands and accepts that the likelihood of scaling error increases when no .DWG file or other properly-dimensioned drawing is provided to the designer.

Reflective Values have a significant effect on light levels, the end-user of the document should confirm these values before accepting the results of any photometric report. The managing contractor/architect/engineer is responsible for ensuring compliance to all relevant lighting ordinance(s) and energy codes required on this project.

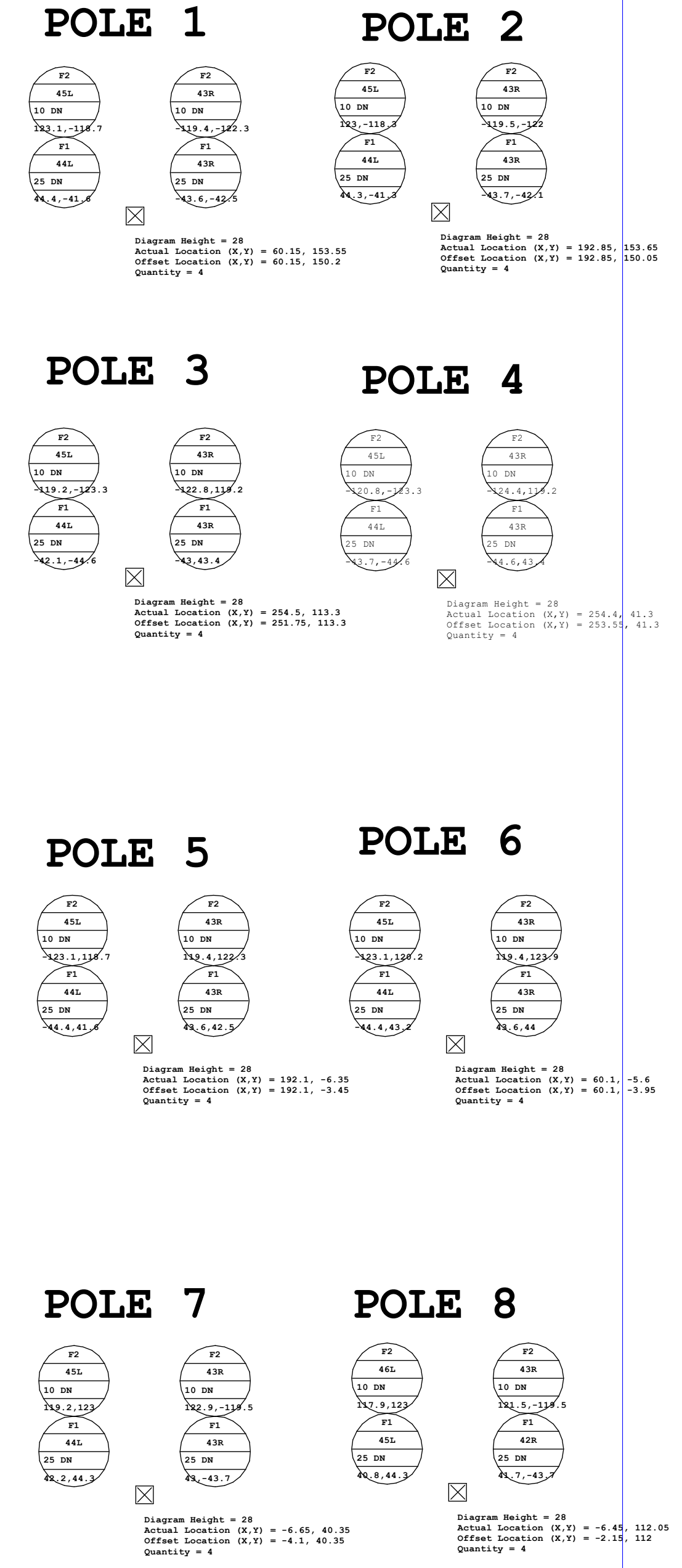
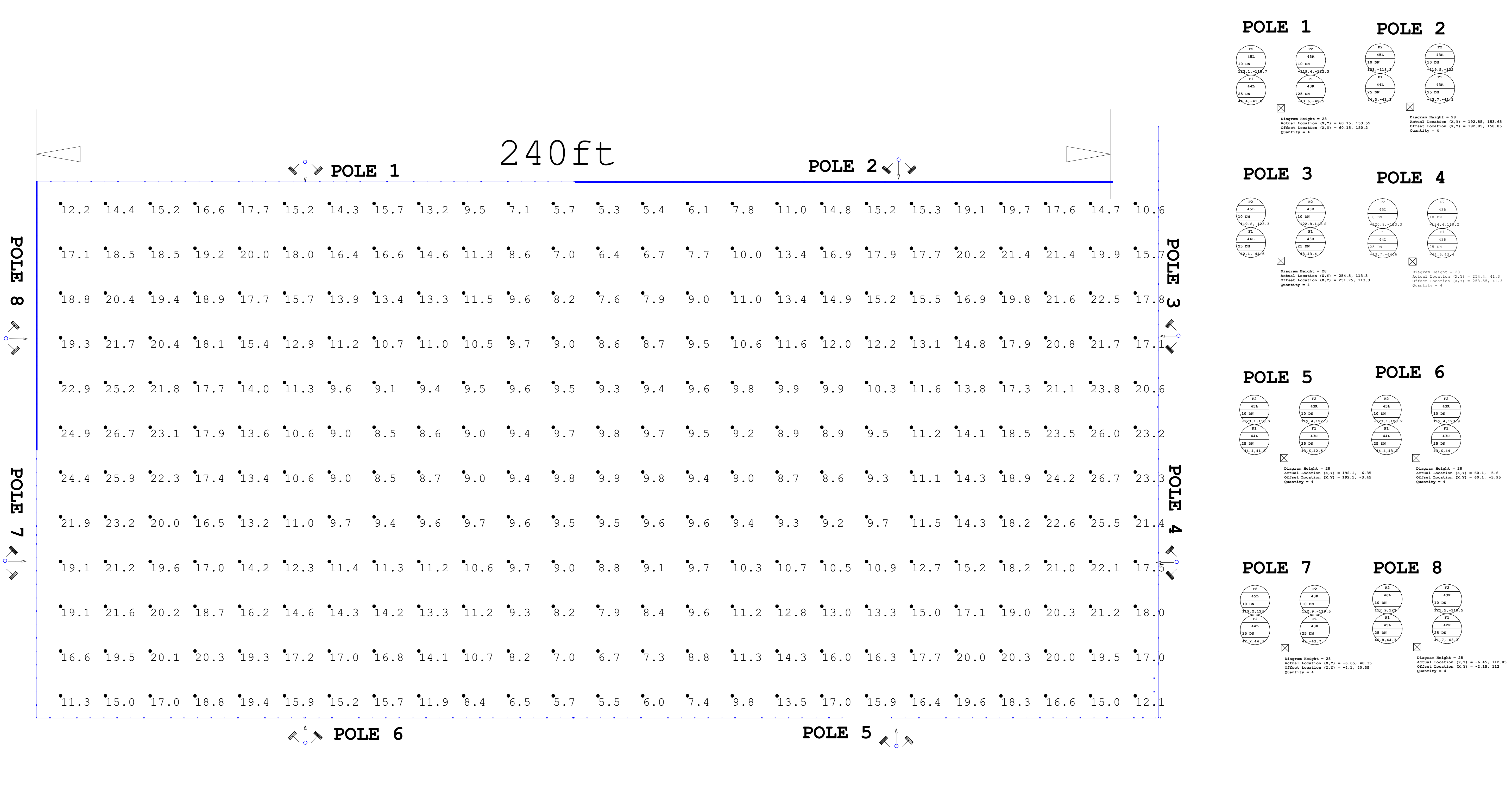
LIGHTING DETAILS:

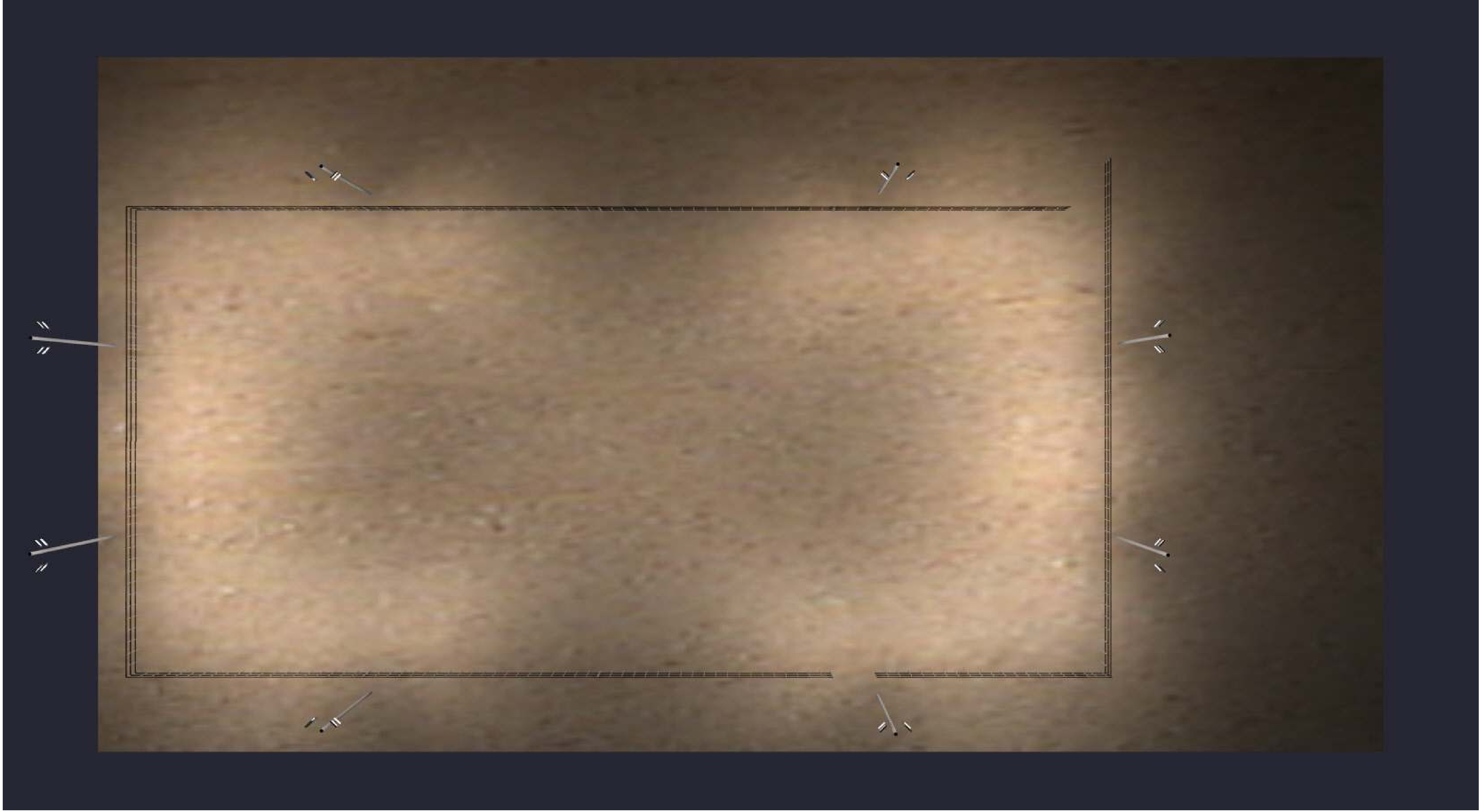
Luminaire Location Summary

LumNo	Label	Insertion Point			Orient	Tilt
		X	Y	Z		
112	F1	61.5	123.85	28	313.919	65
113	F1	58.75	123.85	28	227.203	65
114	F2	58.75	123.85	30	226.736	80
115	F2	61.5	123.85	30	315	80
116	F1	191.35	124.05	28	227.203	65
117	F1	194.1	124.05	28	313.919	65
118	F2	191.35	124.05	30	226.736	80
119	F2	194.1	124.05	30	315	80
120	F1	-6.2	83.55	28	317.203	65
121	F1	-6.2	86.3	28	43.919	65
122	F2	-6.2	83.55	30	316.736	80
123	F2	-6.2	86.3	30	45	80
124	F1	61.5	-5.45	28	47.203	65
125	F1	58.75	-5.45	28	133.919	65
126	F2	61.5	-5.45	30	46.736	80
127	F2	58.75	-5.45	30	135	80
128	F1	-6.6	36.05	28	43.919	65
129	F2	-6.6	33.3	30	316.736	80
130	F2	-6.6	36.05	30	45	80
131	F1	-6.6	33.3	28	317.203	65
132	F1	254.7	86.65	28	137.203	65
133	F1	254.7	83.9	28	223.919	65
134	F2	254.7	86.65	30	136.736	80
135	F2	254.7	83.9	30	225	80
136	F1	254.75	36.1	28	137.203	65
137	F1	254.75	33.35	28	223.919	65
138	F2	254.75	36.1	30	136.736	80
139	F2	254.75	33.35	30	225	80
140	F1	193.5	-6.5	28	47.203	65
141	F1	190.75	-6.5	28	133.919	65
142	F2	193.5	-6.5	30	46.736	80
143	F2	190.75	-6.5	30	135	80

120ft

240ft



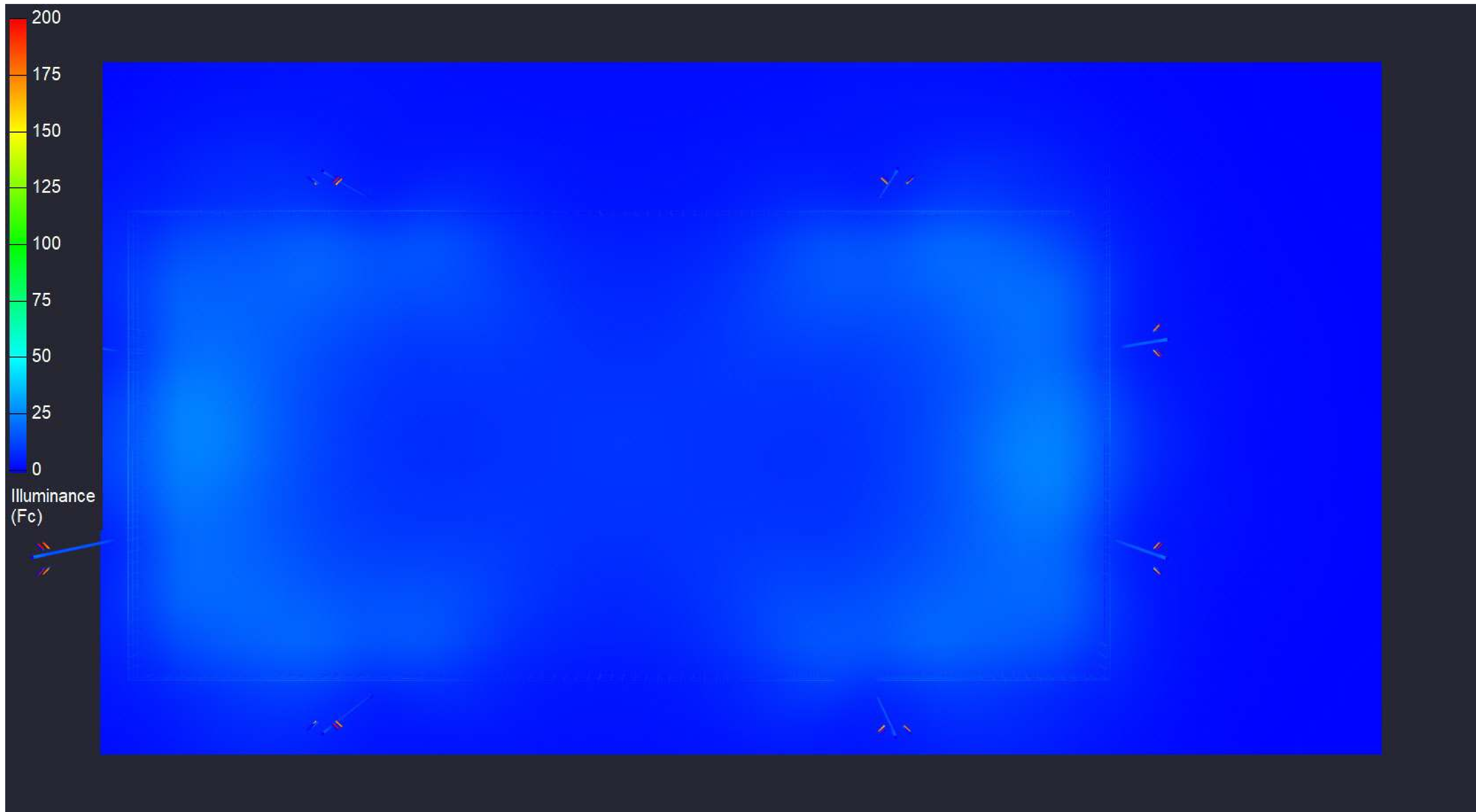


Date:9/5/2025

Drawn By: MS

Revision #:

120' X 240' ROPING ARENA

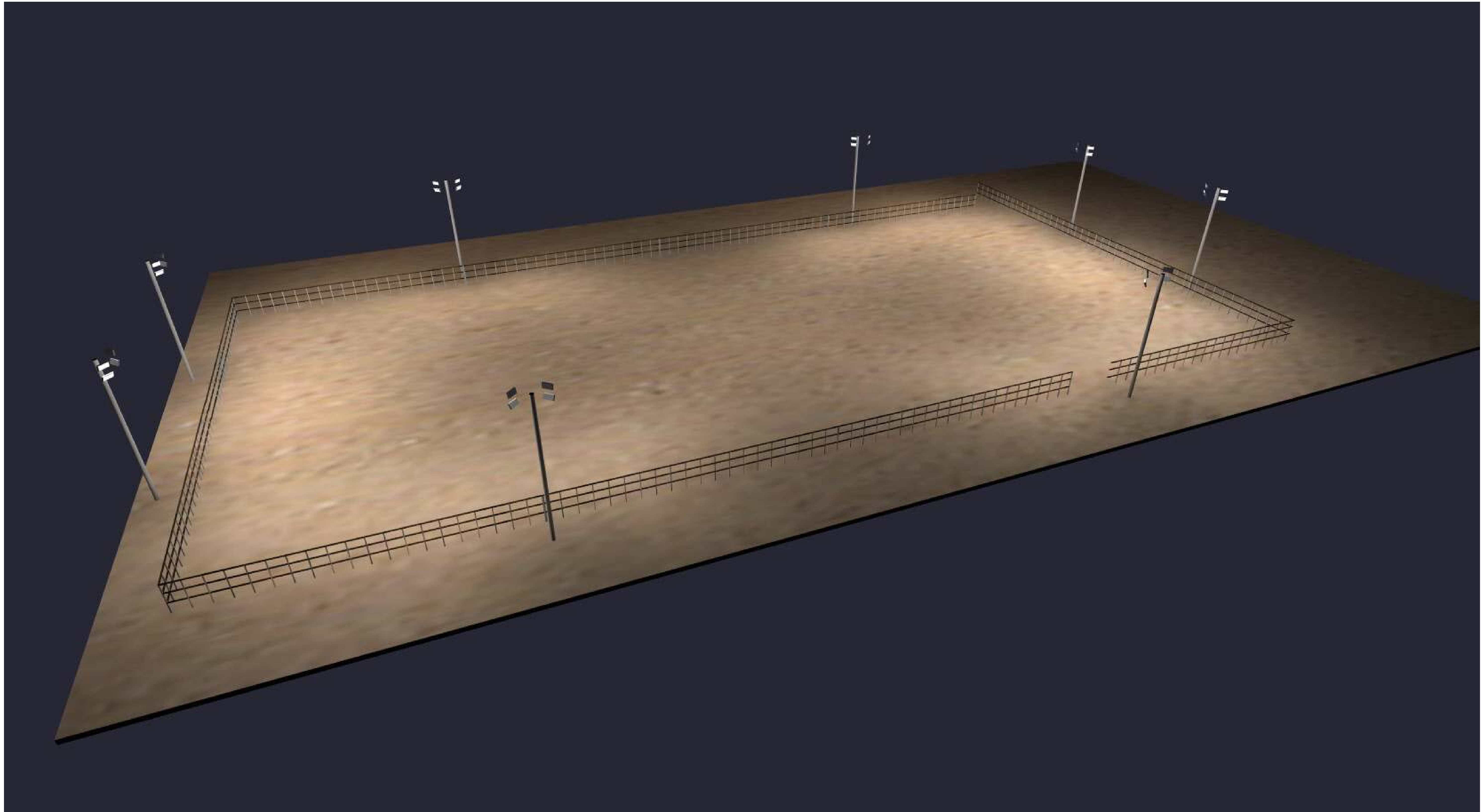


120' X 240' ROPING ARENA

Date:9/5/2025

Drawn By: MS

Revision #:



120' X 240' ROPING ARENA

Date: 9/5/2025

Drawn By: MS

Revision #: