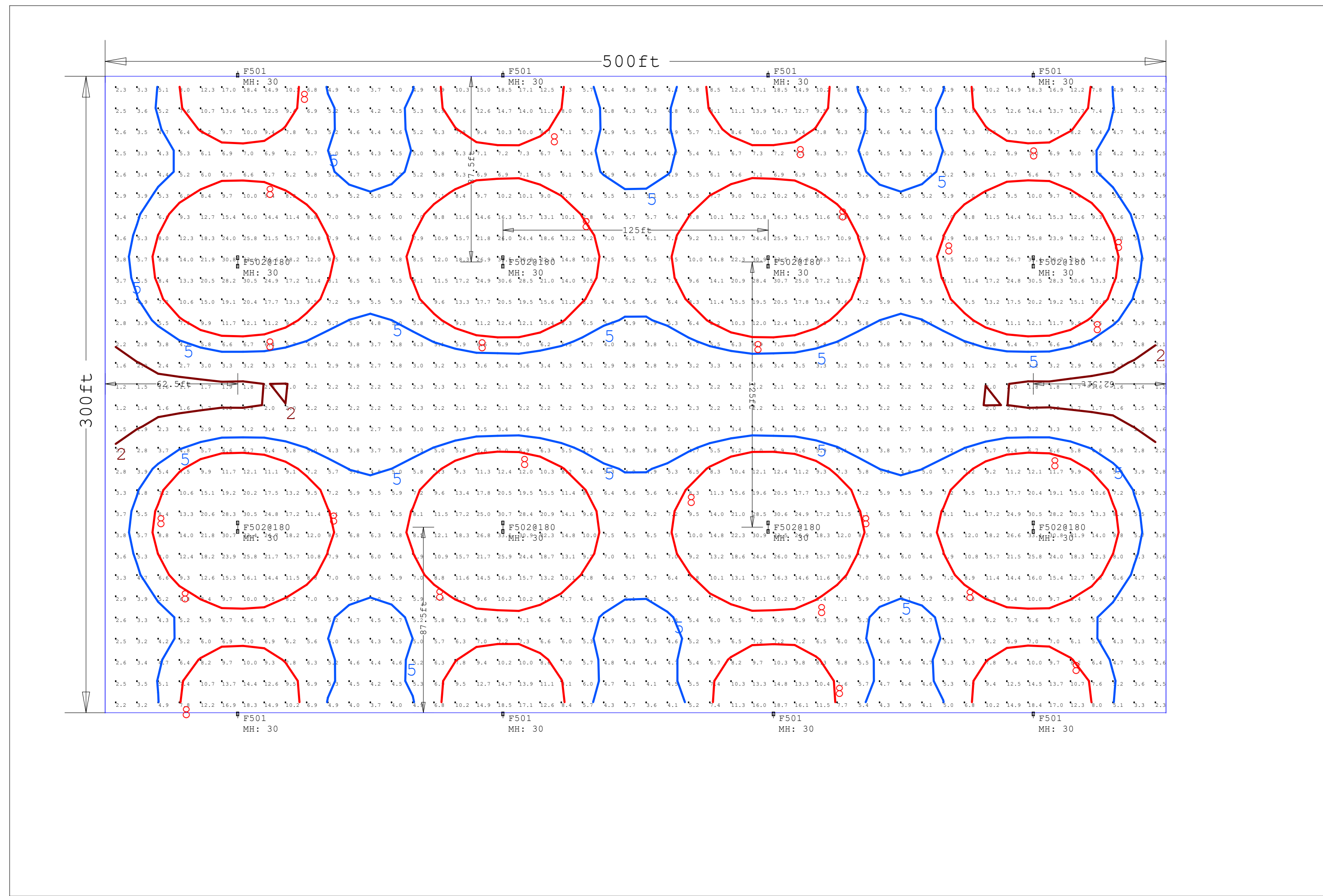


# SPEC SHEET & RENDERS



Scale: 1 inch= 40.00 Ft.

## LIGHTING DETAILS:

Luminaire Schedule							
Label	Symbol	Qty	LLF	Description	Arrangement	Luminaire Lumens	Luminaire Watts
F502@180		8	1.000	500 Watt NextGen III	Back-Back	62734	496.25
F501		8	1.000	500 Watt NextGen III	Single	62734	496.25

Calculation Summary						
Label	CalcType	Units	Avg	Max	Min	Max/Min
Object_1_Top_1	Illuminance	Fc	8.30	33.5	1.2	27.92

### DESIGN NOTES:

- 150W
- 20' POLE
- 
- 

Note on this Design: This report makes no representations in regard to Lighting Design or Specification, rather it attempts to accurately reflect the photometric results of a design, as approved by others.

This analysis is a mathematical model and can be only as accurate as is permitted by the third-party software and the IES standards used. All digital CAD data appear to be accurate, however, this apparent accuracy is an artifact of the techniques used to generate it and is in no way intended to imply accuracy in the real world.

There are many factors that will impact the actual performance of Lighting in the constructed space, including: the accuracy of the original source (.ies) files supplied by the manufacturer, input voltage ballast variances, actual finish values in the constructed environment, manufacturing variations in both the source (lamp) and the luminaire, final luminaire placement, obstructions, and installation quality. Further, field measurement itself is subject to errors arising from measuring methods and/or technology selected, and the knowledge/ability of the measuring party. While the creator of this lighting study makes every effort to ensure accuracy, they cannot be held liable for any errors. The recipient of this lighting study understands and accepts that the likelihood of scaling error increases when no .DWG file or other properly-dimensioned drawing is provided to the designer.

Reflective Values have a significant effect on light levels, the end-user of the document should confirm these values before accepting the results of any photometric report. The managing contractor/architect/engineer is responsible for ensuring compliance to all relevant lighting ordinance(s) and energy codes required on this project.

### 500W NextGen III | LED PARKING LOT LIGHT

**PRODUCT DESCRIPTION**

The Top Rated NextGen Series Gets Better! The NextGen III Series has 140 Lumens per Watt, Super VP driver and DLC E-9 Premium Rated. New eye open Compartment for fast access and optional easy heat in Motion Sensor that can be programmed by a remote.

**PRODUCT FEATURES & COMMON USE APPLICATIONS**

- 140 LUMENS PER WATT (Premium) certification
- Brightest Chip High CRI
- Input voltage 120-277VAC
- Optional constant current mode can be adjusted through output cable with 0-10V
- No UV or IR in the beam
- Easy to install and operate
- Energy saving long lifespan
- Light is soft and uniform, safe to eyes
- Instant start, No Flickering, No humming
- Green and eco friendly without mercury
- Optional backlight cover, tennis court
- Ballroom court, the football field
- The indoor athletic stadium
- Community leisure entertainment plaza, road lamp etc.

**PRODUCT DIMENSIONS**

### 500W NextGen III | LED PARKING LOT LIGHT

**PRODUCT TECHNICAL SPECIFICATIONS**

Input Power (Efficacy - 4.5lm/W)	500/400-450/300 Watt/Voltage Sensitive
Color Temperature	5000K
Lumen (Efficacy - 120%)	70 (3000K) 30000 (3000K) 30000 (3000K) 300 Lumens
Efficacy (Efficacy - 3%)	140
Color Consistency	< 7 Steps per < 7 SDCM
CRF	95 (C95)
Driver Type	Super VP
Beam Angle (SMA) (Efficacy)	120°/150°/180°
Input Voltage and Frequency	120-277VAC, 50/60Hz
IP (Efficacy - 1%)	IP65
THP (Efficacy - 1%)	1200%
Flicker Percent	< 0.5%
Driver Brand	Super VP series
Driver Model	Super VP series
Driver Surge protection	10kVPE 20kV 1.5k 10kV
Dimming	0-10V dimming, DALI, ZigBee
Optional Accessory	Photometric Surge protective Device, DC Motor, Microwave Remote, DC Motion IR sensor, photocell receptacle, shoring cap

**MATERIALS**

LED Brand	Epistar
LED Type	SM3535
LED Qty	64/64/64
Housing	Die-cast aluminum
Housing Color	Black/Black IP Coated/Black
Waterproof Rating	IP65 (IP67)
Operating Temperature	Without Motion Sensor: -40° TO 45°C
Storage Temperature	-40°C TO 60°C
Operating Humidity	20% - 90% RH
Storage Humidity	10% - 90% RH
Warranty	5 years, warranty with 24/7 operating hours Luminaire Lifetime at

### 500W NextGen III | LED PARKING LOT LIGHT

**PHOTOMETRICS**

**Luminaire Property**

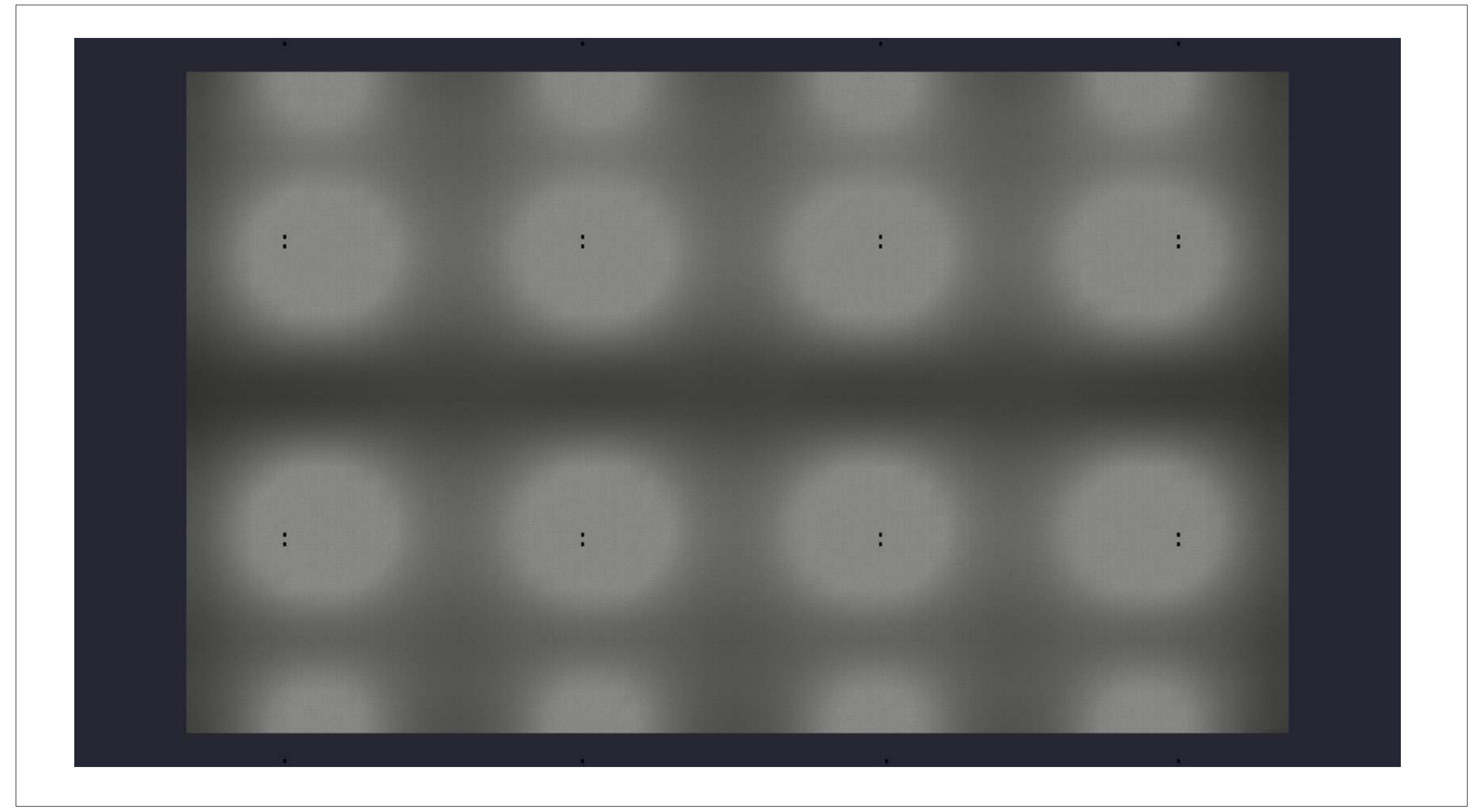
Luminaire Manufacturer: ToppoGrade  
 Luminaire Category: LED  
 Luminaire Description: Lamp Catalog: LED  
 Number of Lamps: 1  
 Luminaire Length (mm): 150  
 Luminaire Width (mm): 150  
 Luminaire Height (mm): 150  
 Current: 4.125 A  
 Power Factor: 0.999

**Photometric Results**

IES Classification: Type III  
 Total Rated Lamp Lumens: 62734.3 lm  
 Efficiency: 120%  
 Upward Ratio: 0%  
 C09 Intensity: 1755.81 cd  
 Pos of Max. Intensity: H22.5 W69

Longitudinal Classification: Medium  
 Measurement Flux: 62734.3 lm  
 Downward Ratio: 100%  
 Luminaire Efficacy Rating (LER): 126.47  
 Max. Intensity: 2463.96 cd

## TYPE F500



## RENDERING


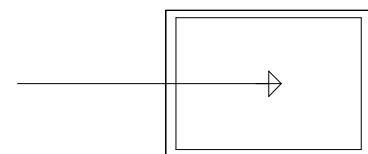
100 X 150 PARKING LOT

Date: 9/11/2025

Drawn By:

Revision #:

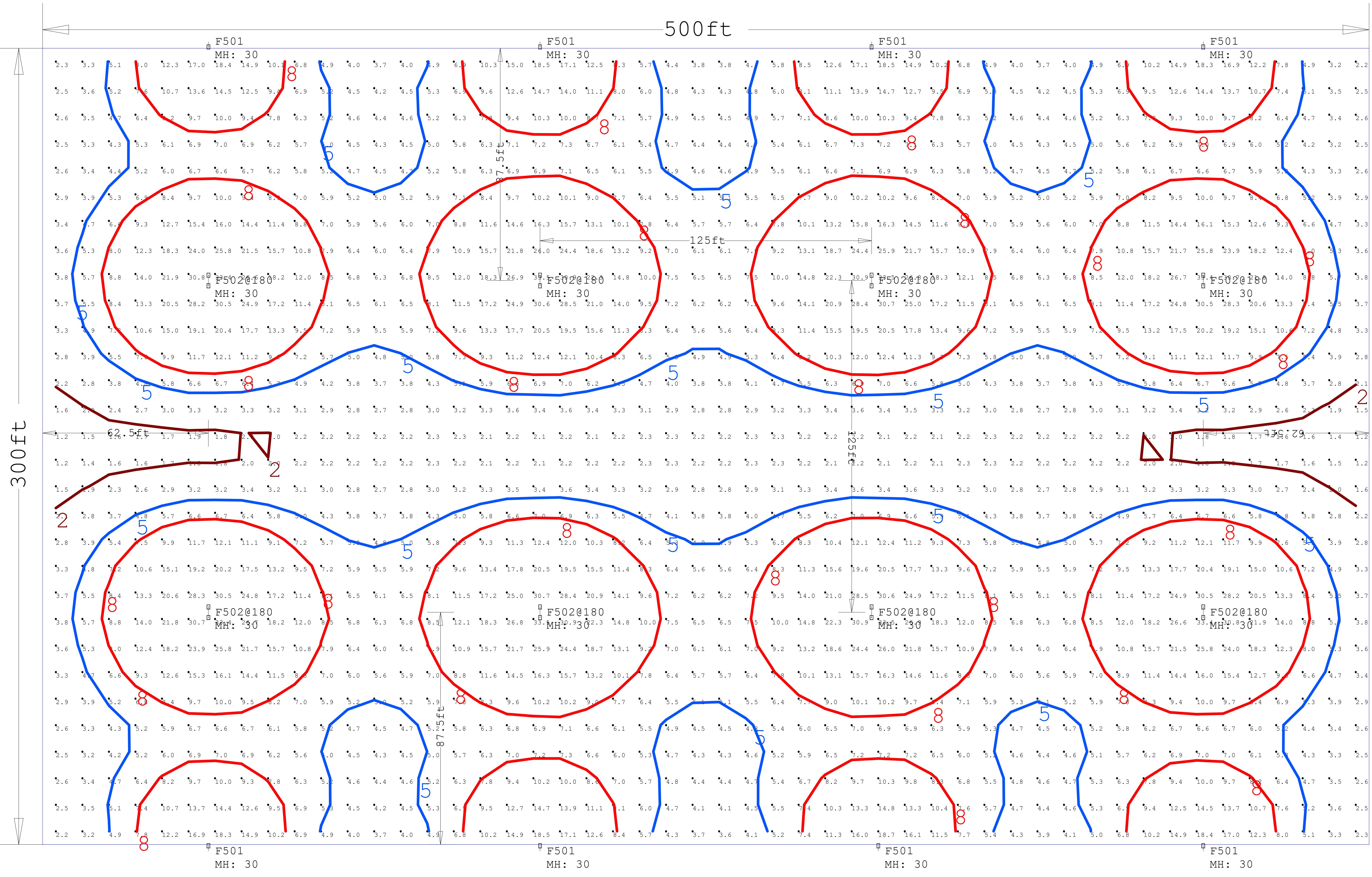
**LIGHTING DETAILS:**

Luminaire Schedule							
Label	Symbol	Qty	LLF	Description	Arrangement	Luminaire Lumens	Luminaire Watts
F502@180		8	1.000	500 Watt NextGen III	Back-Back	62734	496.25
F501		8	1.000	500 Watt NextGen III	Single	62734	496.25

Calculation Summary						
Label	CalcType	Units	Avg	Max	Min	Max/Min
Object_1_Top_1	Illuminance	Fc	8.30	33.5	1.2	27.92

Luminaire Location Summary						
LumNo	Label	Insertion Point			Orient	Tilt
		X	Y	Z		
3	F502@180	62.5	87.5	30	90	0
22	F502@180	187.5	87.5	30	90	0
23	F502@180	312.5	87.5	30	90	0
24	F502@180	437.5	87.5	30	90	0
25	F502@180	62.5	212.5	30	90	0
26	F502@180	187.5	212.5	30	90	0
27	F502@180	312.5	212.5	30	90	0
28	F502@180	437.5	212.5	30	90	0
29	F501	62.5	302.5	30	270	0
30	F501	187.5	302.5	30	270	0
31	F501	312.5	302.5	30	270	0
32	F501	437.5	302.5	30	270	0
33	F501	437.5	-2.5	30	90	0
34	F501	315	-2.5	30	90	0
35	F501	187.5	-2.5	30	90	0
36	F501	62.5	-2.5	30	90	0

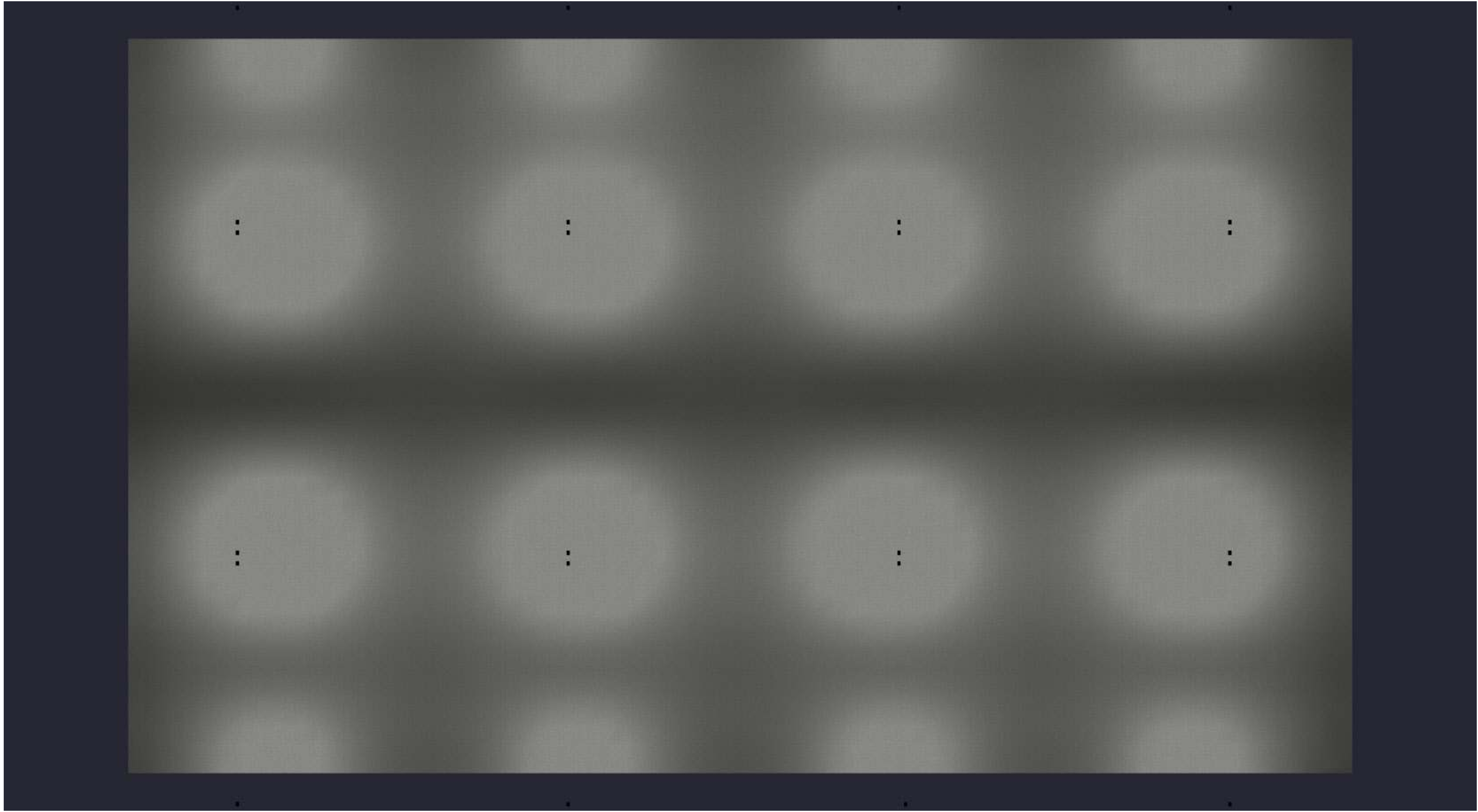
# 100 X 150 PARKING LOT



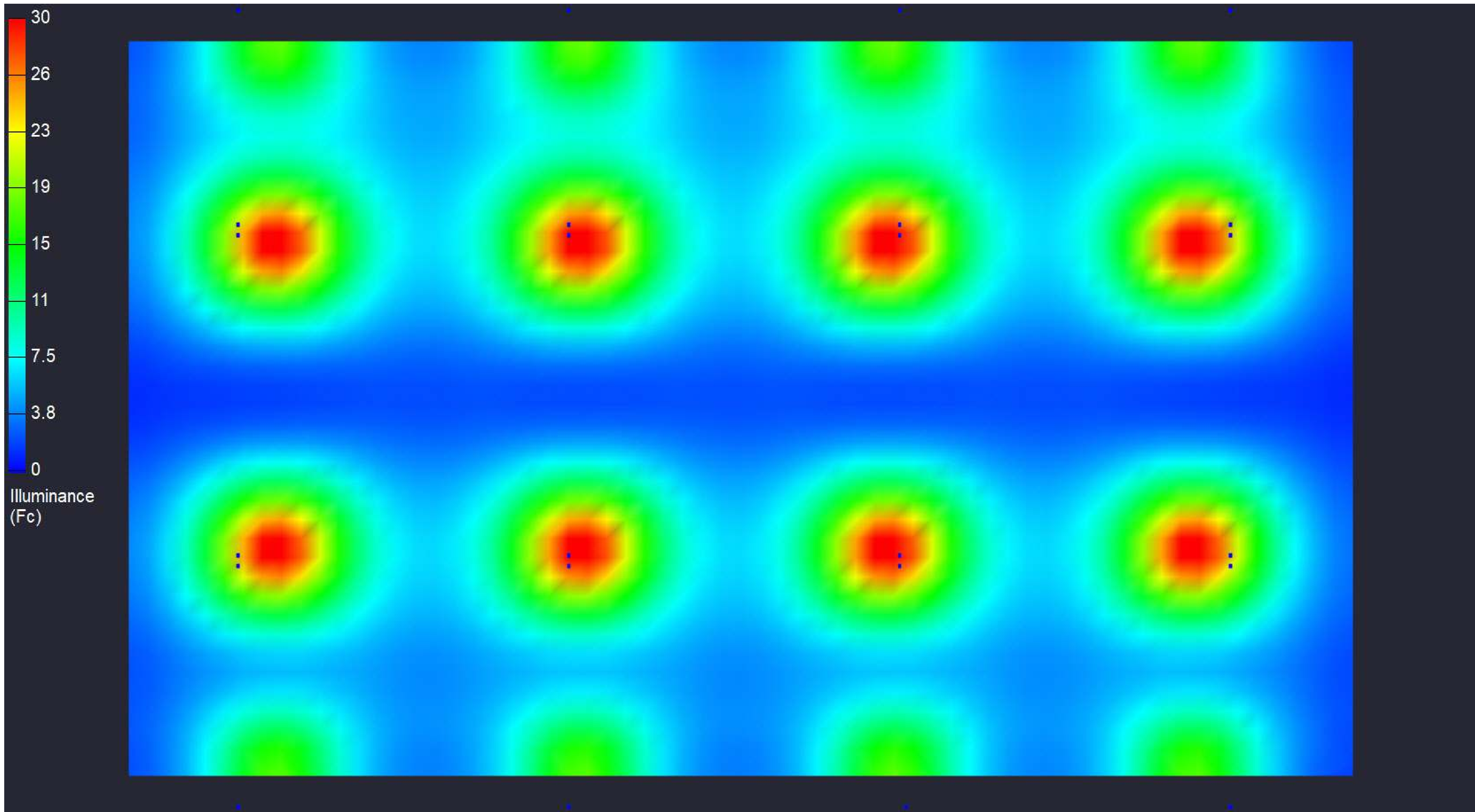
Date:9/11/2025

Drawn By:

Revision #:



# 100 X 150 PARKING LOT



# 100 X 150 PARKING LOT

Date:9/11/2025

Drawn By:

Revision #: