

Scale: 1 inch= 52 Ft.
LIGHTING DETAILS:

Luminaire Schedule						
Label	Symbol	Qty	LLF	Description	Arrangement	Luminaire Watts
SP1		22	1.000	Stadium Pro 1400w 20D	Single	1344.03
SP2		38	1.000	StadiumPro IV 1400W 40D	Single	1398.9

Calculation Summary						
Label	CalcType	Units	Avg	Max	Min	Max/Min
CalcPts_1	Illuminance	Fc	67.03	110.5	41.0	2.70

Note on this Design:
 This report makes no representations in regard to Lighting Design or Specification, rather it attempts to accurately reflect the photometric results of a design, as approved by others.

This analysis is a mathematical model and can be only as accurate as is permitted by the third-party software and the IES standards used. All digital CAD data appear to be accurate, however, this apparent accuracy is an artifact of the techniques used to generate it and is in no way intended to imply accuracy in the real world.

There are many factors that will impact the actual performance of Lighting in the constructed space, including: the accuracy of the original source (.ies) files supplied by the manufacturer, input voltage ballast variances, actual finish values in the constructed environment, manufacturing variations in both the source (lamp) and the luminaire, final luminaire placement, obstructions, and installation quality. Further, field measurement itself is subject to errors arising from measuring methods and/or technology selected, and the knowledge/ability of the measuring party. While the creator of this lighting study makes every effort to ensure accuracy, they cannot be held liable for any errors. The recipient of this lighting study understands and accepts that the likelihood of scaling error increases when no .DWG file or other properly-dimensioned drawing is provided to the designer.

Reflective Values have a significant effect on light levels, the end-user of the document should confirm these values before accepting the results of any photometric report. The managing contractor/architect/engineer is responsible for ensuring compliance to all relevant lighting ordinance(s) and energy codes required on this project.

SPEC SHEET & RENDERS

1400W STADIUMPRO IV SERIES | LED SPORT LIGHT

PRODUCT DESCRIPTION
 The StadiumPro Series reaches new heights with the Series SP in beam enhanced efficiency, delivering an impressive 150 Lumens per watt. Equipped with top-of-the-line Smart LED Driver, 8 ultra-compact mounting options and advanced optics. The Stadium Pro IV is UL Listed and DLC Premium 1.1 Certification has upcoming fall, solidifying its status as the Pioneer of sports lighting!

PRODUCT FEATURES & COMMON USE APPLICATIONS

- UL, IES, DLC, 1.1 premium certification
- Wattage adjustable
- Input voltage 120-277 Vac
- No UV or IR in the beam
- Energy saving, long lifespan
- Instant start, NO Flickering, NO Humming
- Green and eco-friendly without mercury
- Output constant current driver can be adjusted through output cable with 0-10V
- Optical: Cylindrical, Square, Round, Slanted, Asymet, wharf, High Mast and Outdoor lighting, etc.

PRODUCT DIMENSION

TYPE SP

1400W STADIUMPRO IV SERIES | LED SPORT LIGHT

PRODUCT TECHNICAL SPECIFICATION

Input Power (Tolerance +10%)	1400W (Wattage Adjustable Range 20%-100%)
Color Temperature	4000K 4500K 5000K 5700K
Lumen (Tolerance +10%)	15000 LM 16000 LM 17000 LM 20000 LM
Efficiency (Tolerance +10%)	141 LM/W 142 LM/W 143 LM/W 144 LM/W
CFR	1.0
Color Consistency	± 8 Steps (or ± 800M)
Beam	800000
Distribution Pattern	NEMA 4
Beam Angle (20% Tolerance +10%)	20°
Input Voltage and Frequency	120-277 VAC, 50/60Hz
IP (Tolerance -2%)	IP68
THD (Tolerance +5%)	20%
Flicker Percent	3%
Driver Brand	Philips
Driver Model	BU2530420-EN0-A000004PCS
Driver Output Protection	UL98, 100V, 150V
Dimming	0-10V, 0-10V, DALI
Smart Link	485, Serial, RS485, ZigBee, Bluetooth
Optional Accessories	Smart Remote, Photometer, Sensor, Remoteless Short Cap, Smartmount, Dural
LED Brand	Philips
LED Type	COB
LED Qty	150 PCS
Housing	Die-cast Aluminum
Housing Color	Black, White, or Customized
Mounting Rating	MET IP68
Operating Temperature	-40°C to 60°C
Storage Temperature	-40°C to 80°C
Operating Humidity	95% to 98%
Storage Humidity	95% to 98%
Warranty	5 years

PRODUCT MOUNTS & ACCESSORIES

TYPE SP1
 20 DEGREE

1400W STADIUMPRO IV SERIES | LED SPORT LIGHT

PRODUCT TECHNICAL SPECIFICATION

Input Power (Tolerance +10%)	1400W (Wattage Adjustable Range 20%-100%)
Color Temperature	4000K 4500K 5000K 5700K
Lumen (Tolerance +10%)	15000 LM 16000 LM 17000 LM 20000 LM
Efficiency (Tolerance +10%)	141 LM/W 142 LM/W 143 LM/W 144 LM/W
CFR	1.0
Color Consistency	± 8 Steps (or ± 800M)
Beam	800000
Distribution Pattern	NEMA 4
Beam Angle (20% Tolerance +10%)	40°
Input Voltage and Frequency	120-277 VAC, 50/60Hz
IP (Tolerance -2%)	IP68
THD (Tolerance +5%)	20%
Flicker Percent	3%
Driver Brand	Philips
Driver Model	BU2530420-EN0-A000004PCS
Driver Output Protection	UL98, 100V, 150V
Dimming	0-10V, 0-10V, DALI
Smart Link	485, Serial, RS485, ZigBee, Bluetooth
Optional Accessories	Smart Remote, Photometer, Sensor, Remoteless Short Cap, Smartmount, Dural
LED Brand	Philips
LED Type	COB
LED Qty	150 PCS
Housing	Die-cast Aluminum
Housing Color	Black, White, or Customized
Mounting Rating	MET IP68
Operating Temperature	-40°C to 60°C
Storage Temperature	-40°C to 80°C
Operating Humidity	95% to 98%
Storage Humidity	95% to 98%
Warranty	5 years

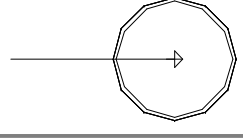
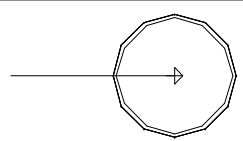
PRODUCT MOUNTS & ACCESSORIES

TYPE SP2
 40 DEGREE



PLAN VIEW

LIGHTING DETAILS:

Luminaire Schedule						
Label	Symbol	Qty	LLF	Description	Arrangement	Luminaire Watts
SP1		22	1.000	Stadium Pro 1400w 20D	Single	1344.03
SP2		38	1.000	StadiumPro IV 1400W 40D	Single	1398.9

Calculation Summary						
Label	CalcType	Units	Avg	Max	Min	Max/Min
CalcPts_1	Illuminance	Fc	67.03	110.5	41.0	2.70

DESIGN NOTES:

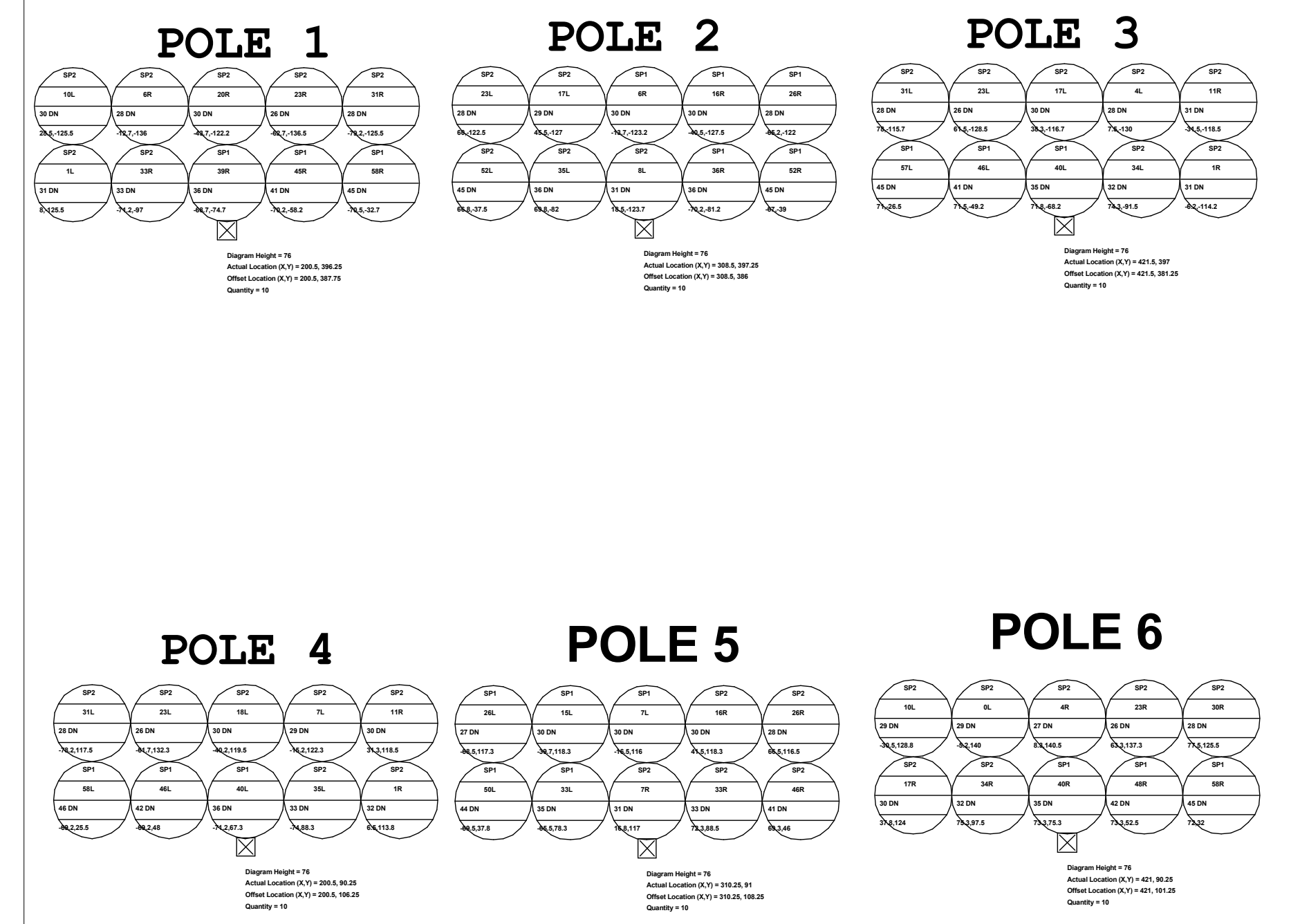
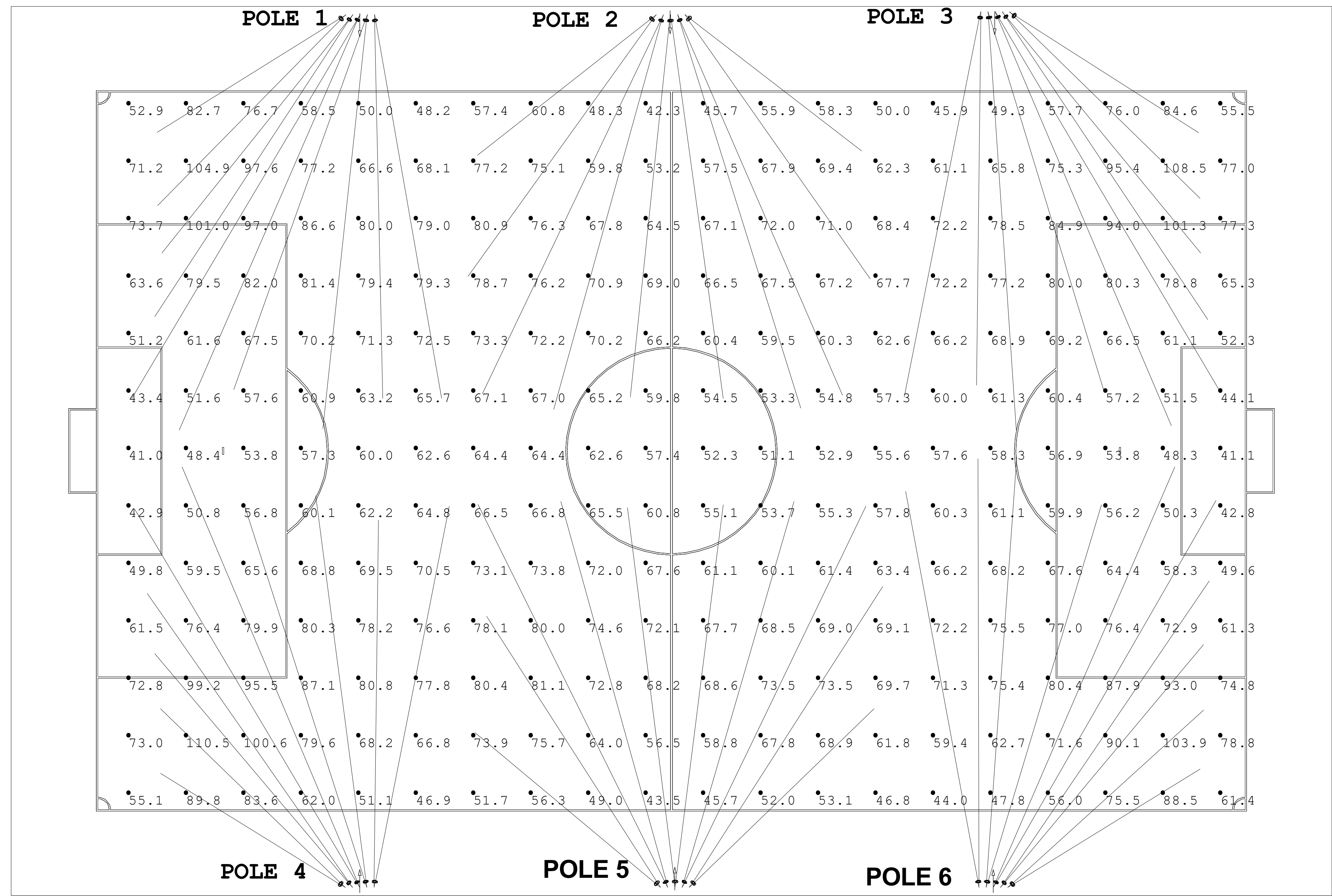
- 1.
- 2.
- 3.
- 4.

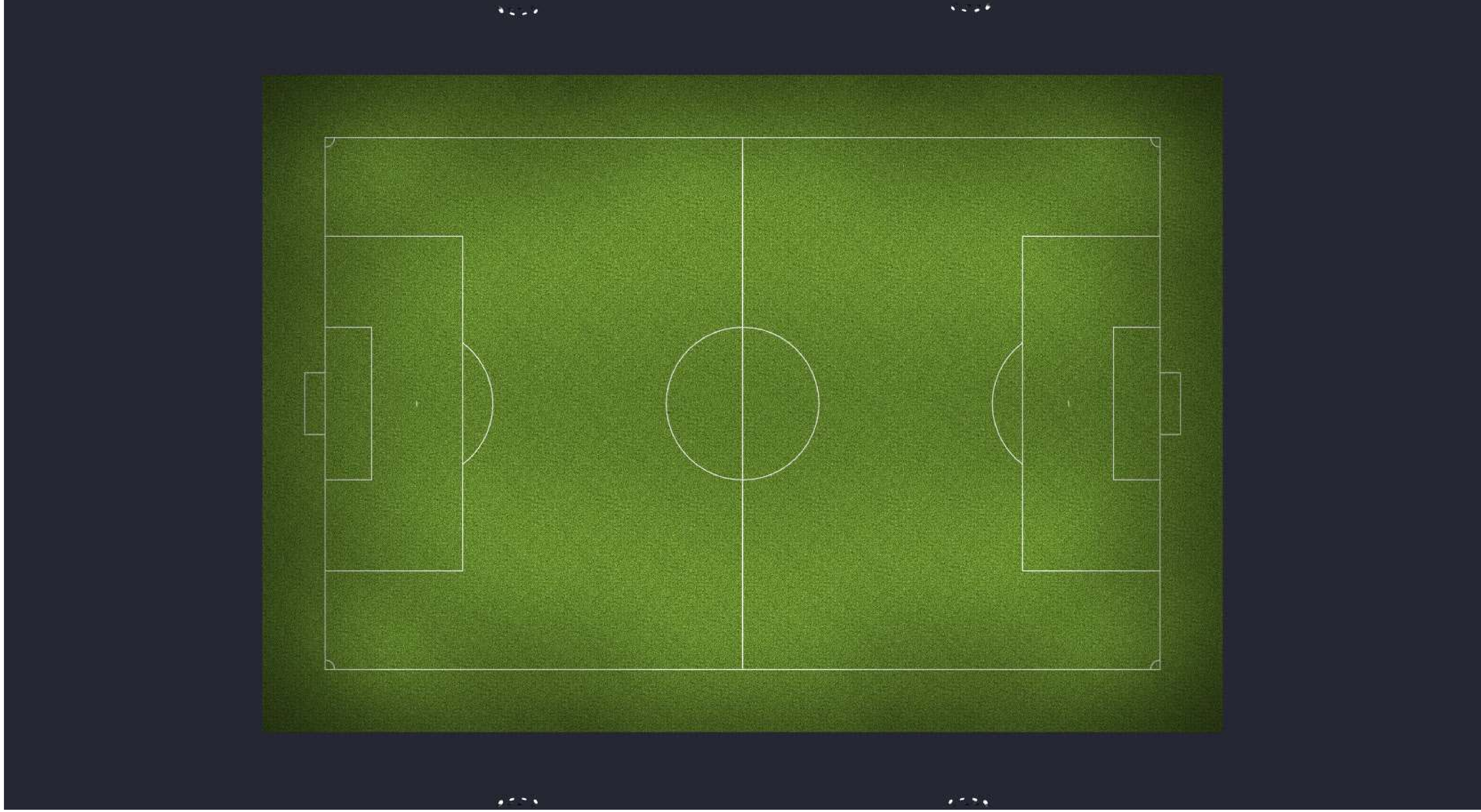
LIGHTING DETAILS:

Luminaire Location Summary						
LumNo	Label	Insertion Point			Orient	Tilt
		X	Y	Z		
2	SP1	195.624	395.809	76	211.876	44.727
4	SP1	426.624	396.809	76	327.444	45.059
5	SP1	198.124	395.835	76	231.296	53.88
6	SP1	195.624	395.861	80	225.429	48.728
7	SP2	198.124	395.887	80	236.772	57.106
8	SP2	200.623	395.913	80	239.297	62.466
9	SP2	203.123	395.939	80	250.429	59.615
10	SP2	200.623	395.965	76	246.517	63.994
11	SP2	203.123	395.991	76	263.916	62.02
12	SP1	424.124	396.833	76	309.508	54.528
13	SP1	426.624	396.858	80	315.663	48.619
14	SP2	424.124	396.882	80	303.766	57.766
15	SP2	421.624	396.906	80	300.653	62.046
16	SP2	419.125	396.931	80	287.054	59.63
17	SP2	419.125	396.955	76	273.877	62.182
18	SP2	421.625	396.979	76	293.052	63.843
19	SP1	195.5	92	76	148.256	44.062
20	SP1	198	92	76	130.15	54.005
21	SP1	195.5	92	80	135.906	47.551
22	SP2	198	92	80	124.898	56.954
23	SP2	200.5	92	80	120.707	62.122
24	SP2	203	92	80	107.725	59.973
25	SP2	200.5	92	76	112.855	64.167
26	SP2	203	92	76	97.409	60.739
27	SP2	418.5	92	76	85.894	62.84
28	SP2	421	92	76	66.648	64.251
29	SP2	418.5	92	80	73.192	59.753
30	SP2	421	92	80	60.095	62.465
31	SP2	423.5	92	80	55.726	57.829
32	SP1	426	92	80	42.138	48.379
33	SP1	423.5	92	76	50.061	54.918
34	SP1	426	92	76	31.619	45.255
35	SP1	306.124	395.861	80	254.488	60.352
36	SP1	306.124	395.809	76	244.498	62.182
37	SP1	308.624	395.835	76	264.048	60.032
38	SP2	308.624	395.887	80	277.829	58.953
39	SP2	311.123	395.965	76	293.42	61.904
40	SP2	313.623	395.939	80	305.105	54.067
41	SP2	313.623	395.991	76	322.381	44.926
42	SP2	311.123	395.913	80	287.389	60.512
43	SP1	307.75	92	80	105.48	59.82
44	SP1	307.75	92	76	116.307	62.649
45	SP1	310.25	92	76	97.112	59.932
46	SP2	310.25	92	80	82.835	58.839
47	SP2	315.25	92	76	44.094	49.01
48	SP2	315.25	92	80	57.299	56.849
49	SP2	312.75	92	76	64.261	62.4
50	SP2	312.75	92	80	73.83	59.906
51	SP2	205.623	395.939	80	271.233	58.728
52	SP2	205.623	395.991	76	279.915	60.397
53	SP1	303.624	395.861	80	234.34	54.007
54	SP1	303.624	395.809	76	218.156	45.376
55	SP2	416.625	396.931	80	258.777	59.312
56	SP2	416.625	396.955	76	269.394	59.293
57	SP2	205.5	92	80	89.329	57.59
58	SP2	205.5	92	76	78.815	60.314
59	SP1	305.25	92	76	122.628	55.41
60	SP1	305.25	92	80	140.064	45.749
61	SP2	416	92	76	100.469	61.216
62	SP2	416	92	80	90.096	61.485

400ft

250ft



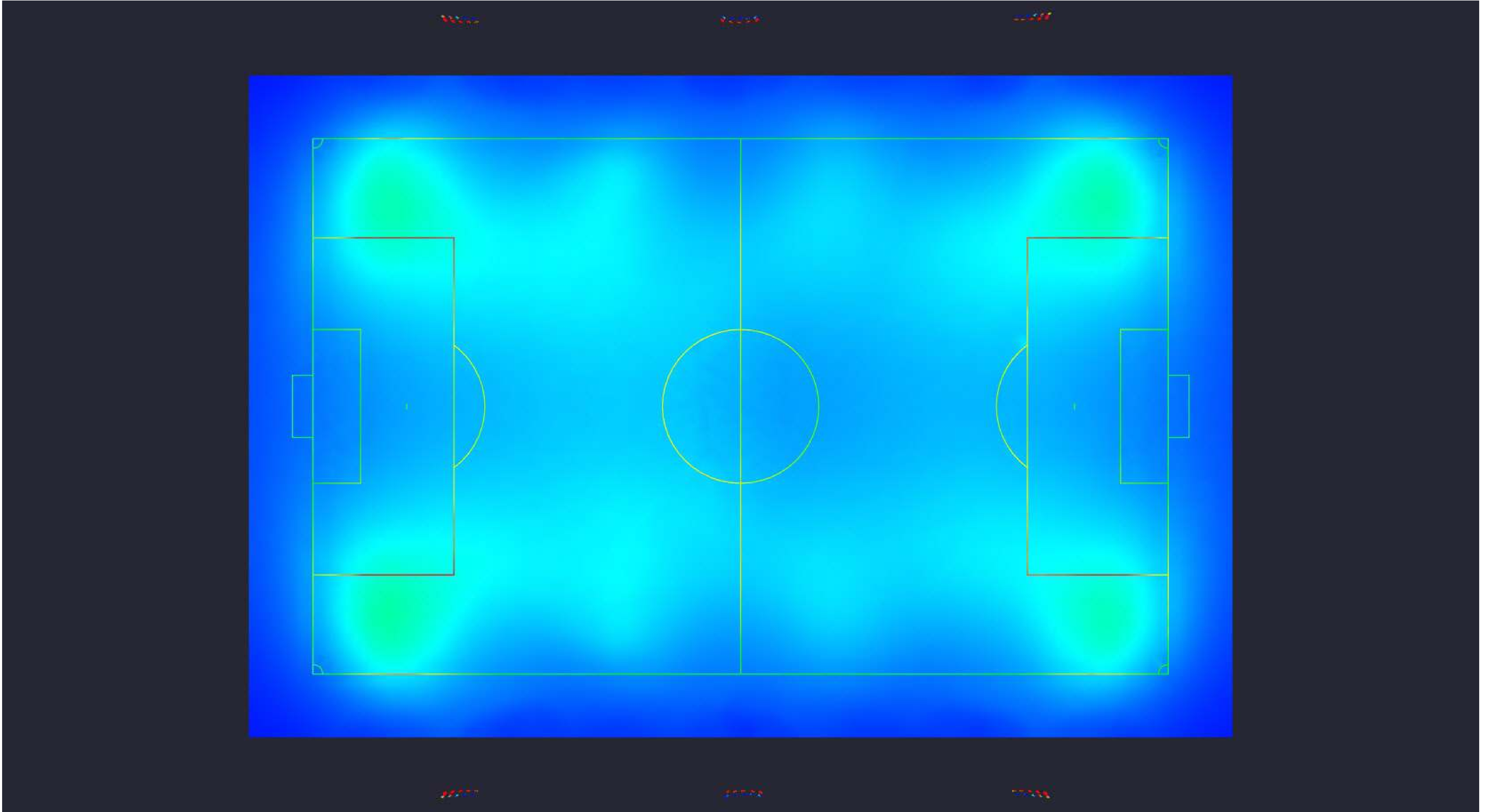


Date:9/18/2025

Drawn By: MS

Revision #:

COLLEGE / PRO SOCCER 4 POLE 1400W 80' MH



Date:9/18/2025

Drawn By: MS

Revision #:

COLLEGE / PRO SOCCER 4 POLE 1400W 80' MH