

Scale: 1 inch= 41.74 Ft.

### LIGHTING DETAILS:

Luminaire Schedule					
Label	Symbol	Qty	LLF	Description	Luminaire Watts
SP1		36	1.000	Centario Pro 800W 35D	824.79

Calculation Summary						
Label	CalcType	Units	Avg	Max	Min	Max/Min
CalcPts_1	Illuminance	Fc	51.77	79.9	30.4	2.63

Note on this Design:  
This report makes no representations in regard to Lighting Design or Specification, rather it attempts to accurately reflect the photometric results of a design, as approved by others.

This analysis is a mathematical model and can be only as accurate as is permitted by the third-party software and the IES standards used. All digital CAD data appear to be accurate, however, this apparent accuracy is an artifact of the techniques used to generate it and is in no way intended to imply accuracy in the real world.

There are many factors that will impact the actual performance of Lighting in the constructed space, including: the accuracy of the original source (.ies) files supplied by the manufacturer, input voltage ballast variances, actual finish values in the constructed environment, manufacturing variations in both the source (lamp) and the luminaire, final luminaire placement, obstructions, and installation quality. Further, field measurement itself is subject to errors arising from measuring methods and/or technology selected, and the knowledge/ability of the measuring party. While the creator of this lighting study makes every effort to ensure accuracy, they cannot be held liable for any errors. The recipient of this lighting study understands and accepts that the likelihood of scaling error increases when no .DWG file or other properly-dimensioned drawing is provided to the designer.

Reflective Values have a significant effect on light levels, the end-user of the document should confirm these values before accepting the results of any photometric report. The managing contractor/ architect/engineer is responsible for ensuring compliance to all relevant lighting ordinance(s) and energy codes required on this project.

## SPEC SHEET & RENDERS

PRODUCT TECHNICAL SPECIFICATIONS	
Input Power (Maximum @ 120V)	800W
Color Temperature	5000K
Lumen/Package (36)	17000LM
Efficiency (lm/watt @ 36)	182.22LM/W
Color Consistency	±7 Steps (at 7000K)
Beam Angle	120°
Electrical Protection	IP65
Input Voltage and Frequency	120-277VAC, 50/60Hz
BT (optional)	Yes
THD (optional)	≤5%
Power Factor	≥0.95
Driver Brand	OSRAM
Driver Model	BLD-PRC350-020
Control System	1-5V Dimming, 0-10V Dimming, 0-10V Analog Dimming, 0-10V Analog Dimming
LED Brand	OSRAM
LED Type	COB
LED Qty	120
Material	Aluminum
Weight	2.2kg
Dimensions	120x120x120mm
Operating Temperature	-40°C to 60°C
Storage Temperature	-40°C to 60°C
Operating Humidity	10% to 90% RH
Storage Humidity	10% to 90% RH
Warranty	5 Years (50,000 hours @ 24/7 operating hours)

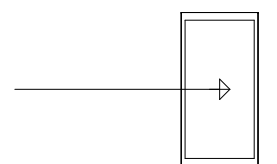
PRODUCT PACKAGING				
Sheet Page	Luminaire Part Number	Size	Qty/Case	Weight/Case
Outer Box	718	1000mm x 110mm	1 PC	24.5kg
Volume of Carton Size: 1.17m³, Transparency of Weight: 2.1%				

### TYPE SP1



### PLAN VIEW

**LIGHTING DETAILS:**

Luminaire Schedule					
Label	Symbol	Qty	LLF	Description	Luminaire Watts
SP1		36	1.000	Centario Pro 800W 35D	824.79

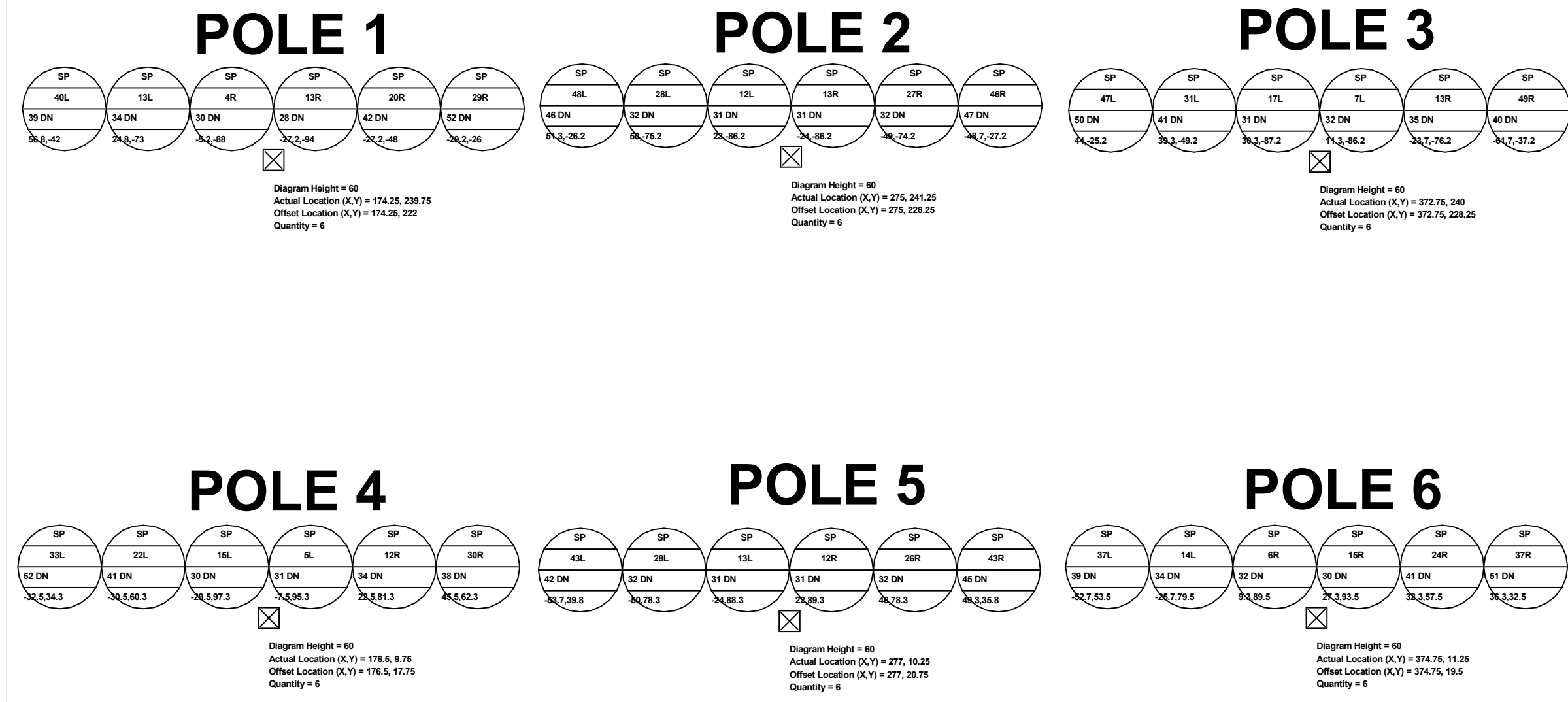
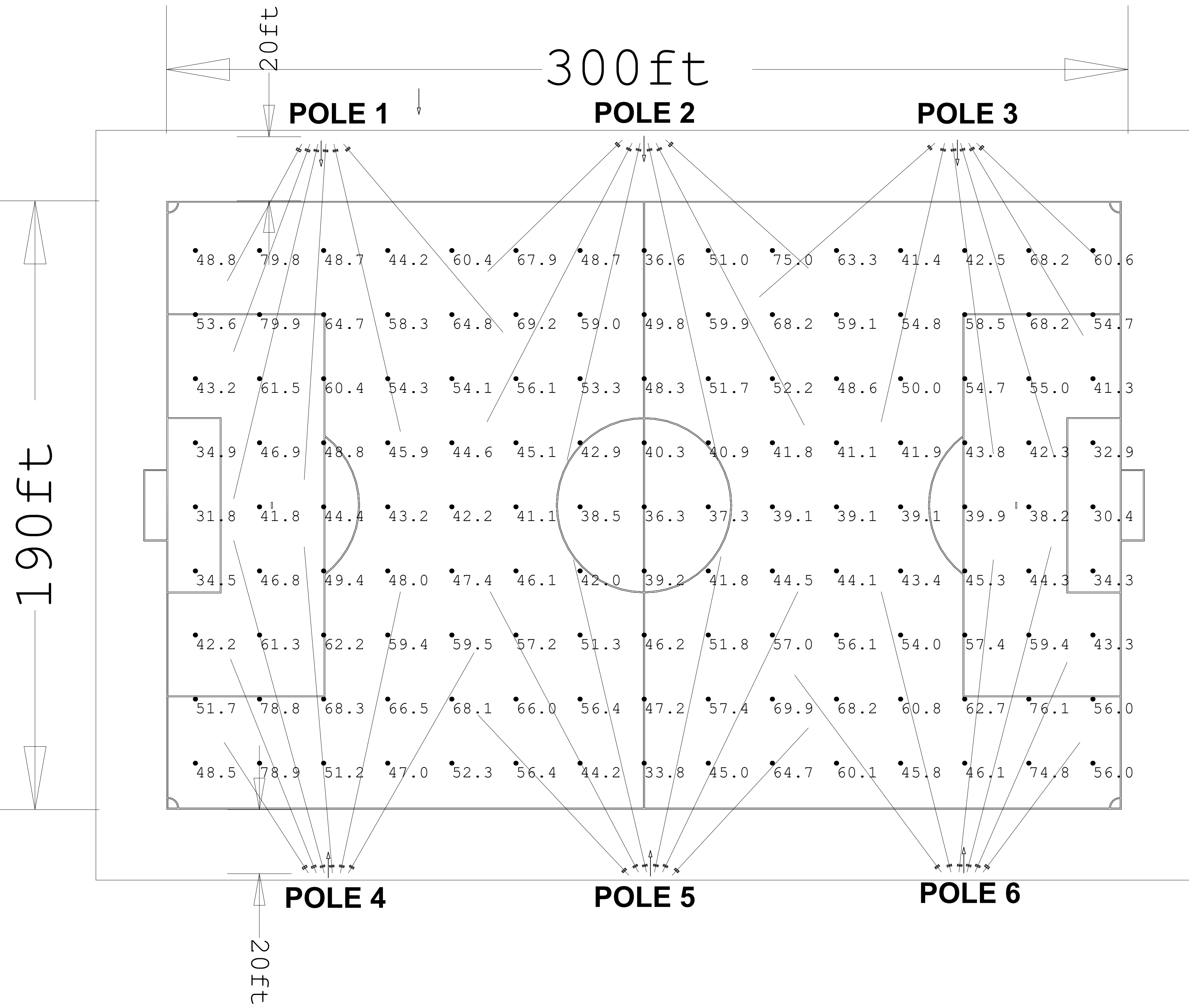
Calculation Summary						
Label	CalcType	Units	Avg	Max	Min	Max/Min
CalcPts_1	Illuminance	Fc	51.77	79.9	30.4	2.63

DESIGN NOTES:

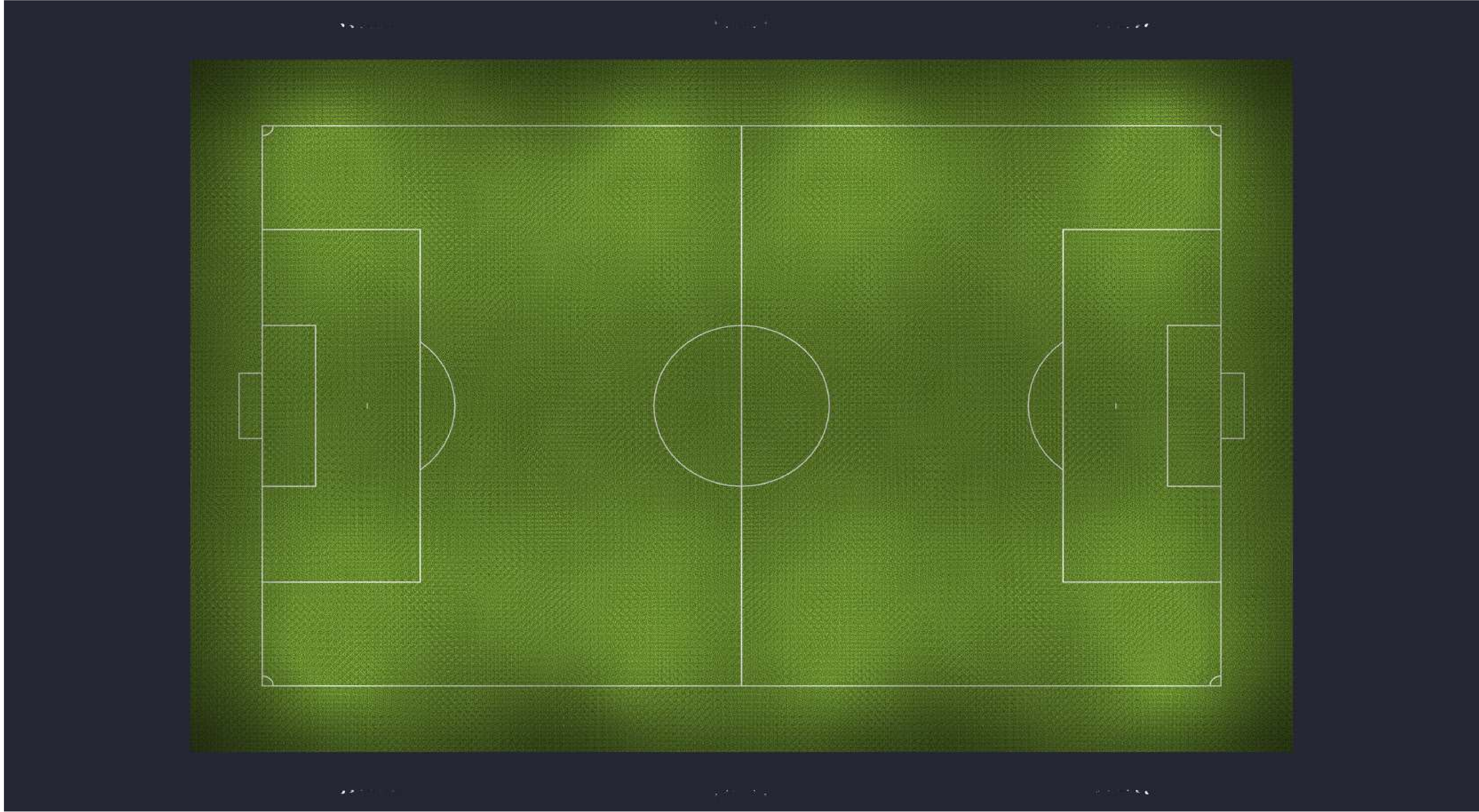
- 1.
- 2.
- 3.
- 4.

**LIGHTING DETAILS:**

Luminaire Location Summary						
LumNo	Label	Insertion Point			Orient	Tilt
		X	Y	Z		
2	SP1	276.25	239	60	282.391	58.874
3	SP1	378.75	239	60	316.548	39.999
5	SP1	278.25	11.5	60	78.104	58.695
6	SP1	380.75	11.5	60	53.243	38.979
11	SP1	278.75	239	60	297.725	58.37
13	SP1	273.75	239	60	257.058	58.93
14	SP1	271.25	239	60	242.52	58.012
16	SP1	376.25	239	60	300.788	48.511
17	SP1	373.75	239	60	286.619	59.105
18	SP1	371.25	239	60	277.488	57.95
19	SP1	368.75	239	60	257.21	55.473
27	SP1	378.25	11.5	60	66.302	49.209
28	SP1	375.75	11.5	60	75.5	59.739
29	SP1	373.25	11.5	60	83.708	58.019
30	SP1	370.75	11.5	60	103.959	55.762
38	SP1	280.75	11.5	60	64.226	57.77
40	SP1	275.75	11.5	60	103.134	58.554
41	SP1	273.25	11.5	60	117.86	58.253
44	SP1	178.25	238.75	60	283.018	56.344
45	SP1	180.25	11.25	60	77.939	55.631
46	SP1	170.75	238.75	60	249.857	48.141
47	SP1	168.25	238.75	60	241.46	37.873
48	SP1	172.75	11.25	60	111.838	49.362
49	SP1	170.25	11.25	60	122.789	37.76
50	SP1	177.75	11.25	60	94.915	59.068
51	SP1	175.75	238.75	60	266.313	59.77
52	SP1	173.25	238.75	60	256.666	61.783
53	SP1	175.25	11.25	60	105.232	60.379
54	SP1	181.25	238.75	60	310.258	51.334
55	SP1	281.75	240	60	318.048	43.948
56	SP1	268.25	240	60	224.31	43.377
57	SP1	365.75	239	60	221.241	49.725
58	SP1	367.75	11.5	60	126.646	51.21
59	SP1	270.25	10.5	60	133.229	47.994
60	SP1	283.75	10.5	60	47.265	45.298
61	SP1	182.75	11.25	60	60.278	52.133



REGULATION SOCCER 6 POLE 1400W 60' MH

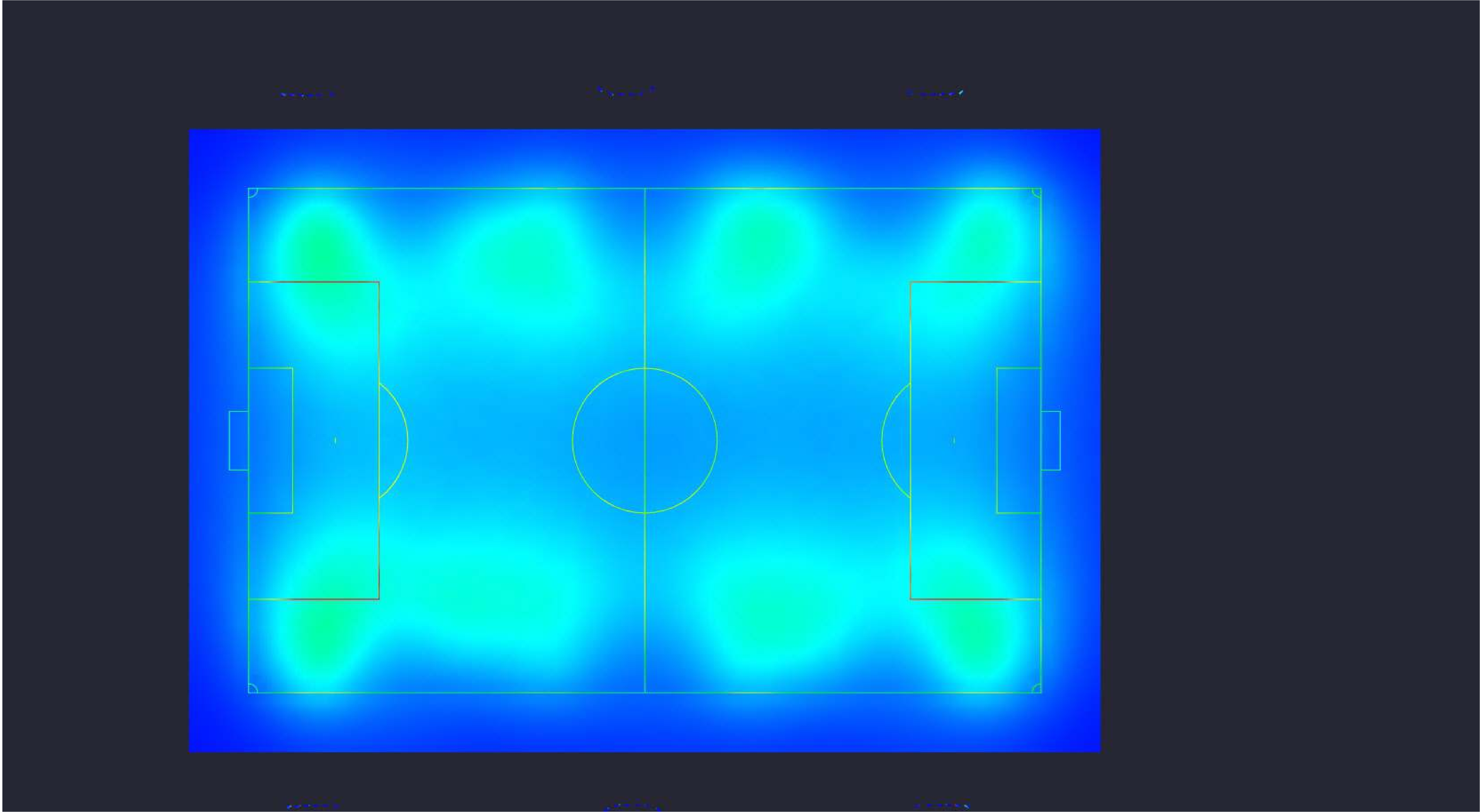


Date:9/18/2025

Drawn By:

Revision #:

# REGULATION SOCCER 6 POLE 1400W 60' MH



Date:9/18/2025  
Drawn By:  
Revision #:

# REGULATION SOCCER 6 POLE 1400W 60' MH