

Scale: 1 inch= 48 Ft.

LIGHTING DETAILS:

Luminaire Schedule					
Label	Symbol	Qty	LLF	Description	Luminaire Watts
SP1		36	1.000	Centario Pro 800W 35D	824.79

Calculation Summary						
Label	CalcType	Units	Avg	Max	Min	Max/Min
CalcPts_1	Illuminance	Fc	51.77	79.9	30.4	2.63

Note on this Design:
This report makes no representations in regard to Lighting Design or Specification, rather it attempts to accurately reflect the photometric results of a design, as approved by others.

This analysis is a mathematical model and can be only as accurate as is permitted by the third-party software and the IES standards used. All digital CAD data appear to be accurate, however, this apparent accuracy is an artifact of the techniques used to generate it and is in no way intended to imply accuracy in the real world.

There are many factors that will impact the actual performance of Lighting in the constructed space, including: the accuracy of the original source (.ies) files supplied by the manufacturer, input voltage ballast variances, actual finish values in the constructed environment, manufacturing variations in both the source (lamp) and the luminaire, final luminaire placement, obstructions, and installation quality. Further, field measurement itself is subject to errors arising from measuring methods and/or technology selected, and the knowledge/ability of the measuring party. While the creator of this lighting study makes every effort to ensure accuracy, they cannot be held liable for any errors. The recipient of this lighting study understands and accepts that the likelihood of scaling error increases when no .DWG file or other properly-dimensioned drawing is provided to the designer.

Reflective Values have a significant effect on light levels, the end-user of the document should confirm these values before accepting the results of any photometric report. The managing contractor/ architect/engineer is responsible for ensuring compliance to all relevant lighting ordinance(s) and energy codes required on this project.

SPEC SHEET & RENDERS

800W CENTARIO PRO | LED SPORT LIGHT

PRODUCT DESCRIPTION
THE CENTARIO PRO SERIES EVOLVED WITH AN ALL NEW DESIGN TO BE INHERENTLY MORE EFFICIENT WITH HIGHER LUMENS, TOP-FIX LENS DRIVER, AND A NEW SIMPLE FLOOD-MOUNT OPTION. THE CENTARIO PRO IS IESL CERTIFIED - THE PARADISE OF SPORT LIGHTING!

PRODUCT FEATURES & COMMON USE APPLICATIONS

- ✓ UL, cUL, certificate
- ✓ Input voltage 120-277VAC
- ✓ No UV or IR in the beam
- ✓ Easy to install and handle
- ✓ Energy saving, long lifespan
- ✓ Instant start, NO flickering, NO humming
- ✓ Green and eco-friendly without mercury
- ✓ Output constant current level can be adjusted through output cable with 0-10V

PRODUCT DIMENSIONS

800W CENTARIO PRO | LED SPORT LIGHT

PRODUCT TECHNICAL SPECIFICATIONS

Input Power (Maximum @ 277V)	800W
Color Temperature	5000K
Lumen/Package (36°)	11000LM
Efficiency (lm/watt @ 36°)	138LM/W
Color Consistency	±7 Steps (at 7000K)
Beam	HOLOGRAM
Emergency Pattern	MEMO 2
Beam Angle (30°/11°/6°/3°)	12°/36°/60°/90°/120°
Input Voltage and Frequency	120-277VAC, 50/60Hz
BT (optional)	YES
THD (optional)	≤5%
Power Factor	≥0.95
Driver Brand	OSRAM
Driver Model	BLD-PRC350-020
Control Accessories	1. REMOTE CONTROL 2. 0-10V Dimming Controller 3. Single-Channel Dimmer
LED Brand	OSRAM
LED Type	PHILIPS
LED Qty	120PCS
Mounting	On-wall/Recessed
Mounting Color	Black/White or Customized
EPA	2.7"
Material	ALUMINUM
Operating Temperature	-40°C TO 65°C
Storage Temperature	-40°C TO 65°C
Operating Humidity	20% - 90% RH
Storage Humidity	10% - 90% RH
Warranty	3 Years Warranty and 50,000 operating hours (Luminaire lifetime at 25°C)

800W CENTARIO PRO | LED SPORT LIGHT

PRODUCT PACKAGING

Sheet Page	Luminaire Unit Weight	Size	SKU/Color	Weight Carton
Outer Size	77kg	1000*800*150mm	1 PC	24.5kg

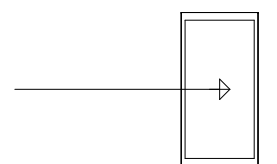
Volume of Carton Size: 1.17 CBM, Transparency of Weight: 2.18%

TYPE SP1



PLAN VIEW

LIGHTING DETAILS:

Luminaire Schedule					
Label	Symbol	Qty	LLF	Description	Luminaire Watts
SP1		36	1.000	Centario Pro 800W 35D	824.79

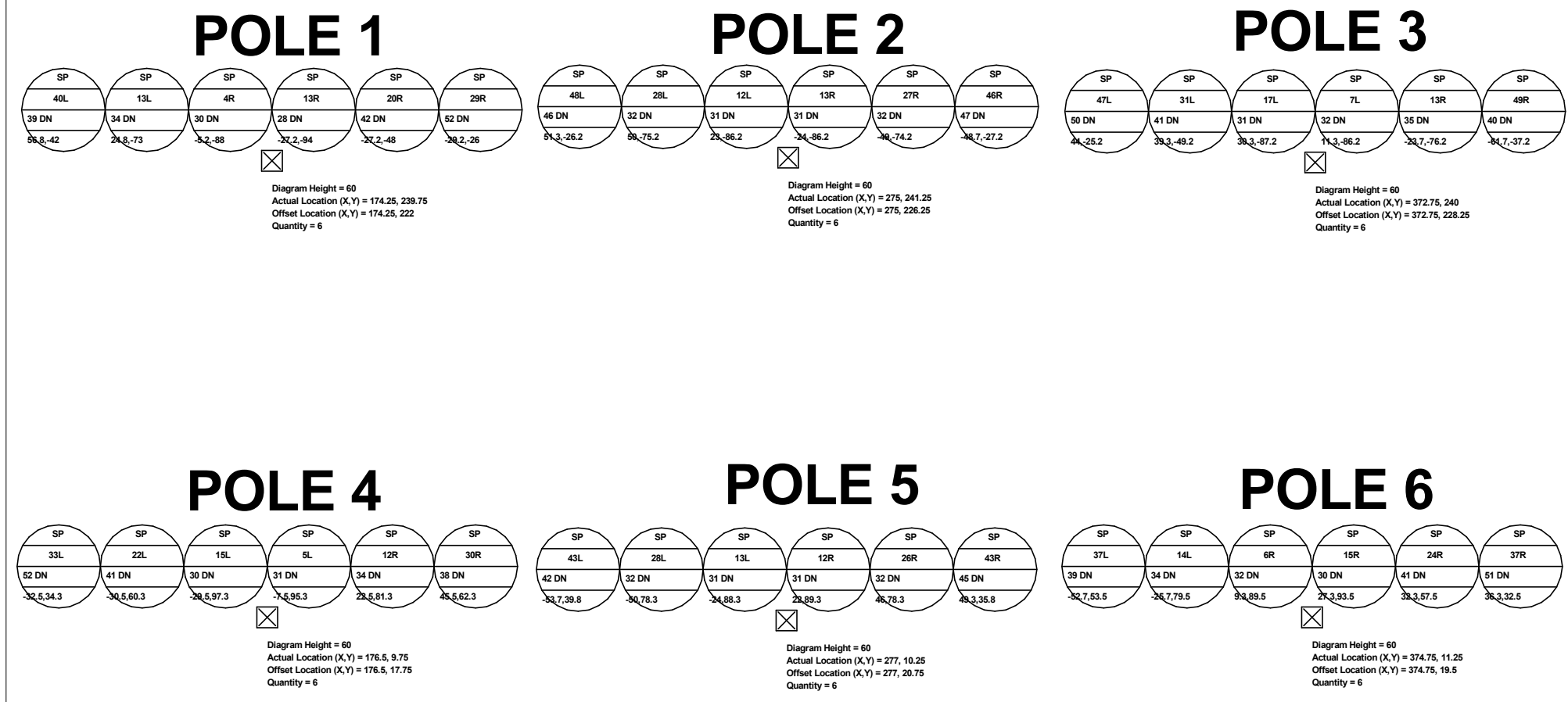
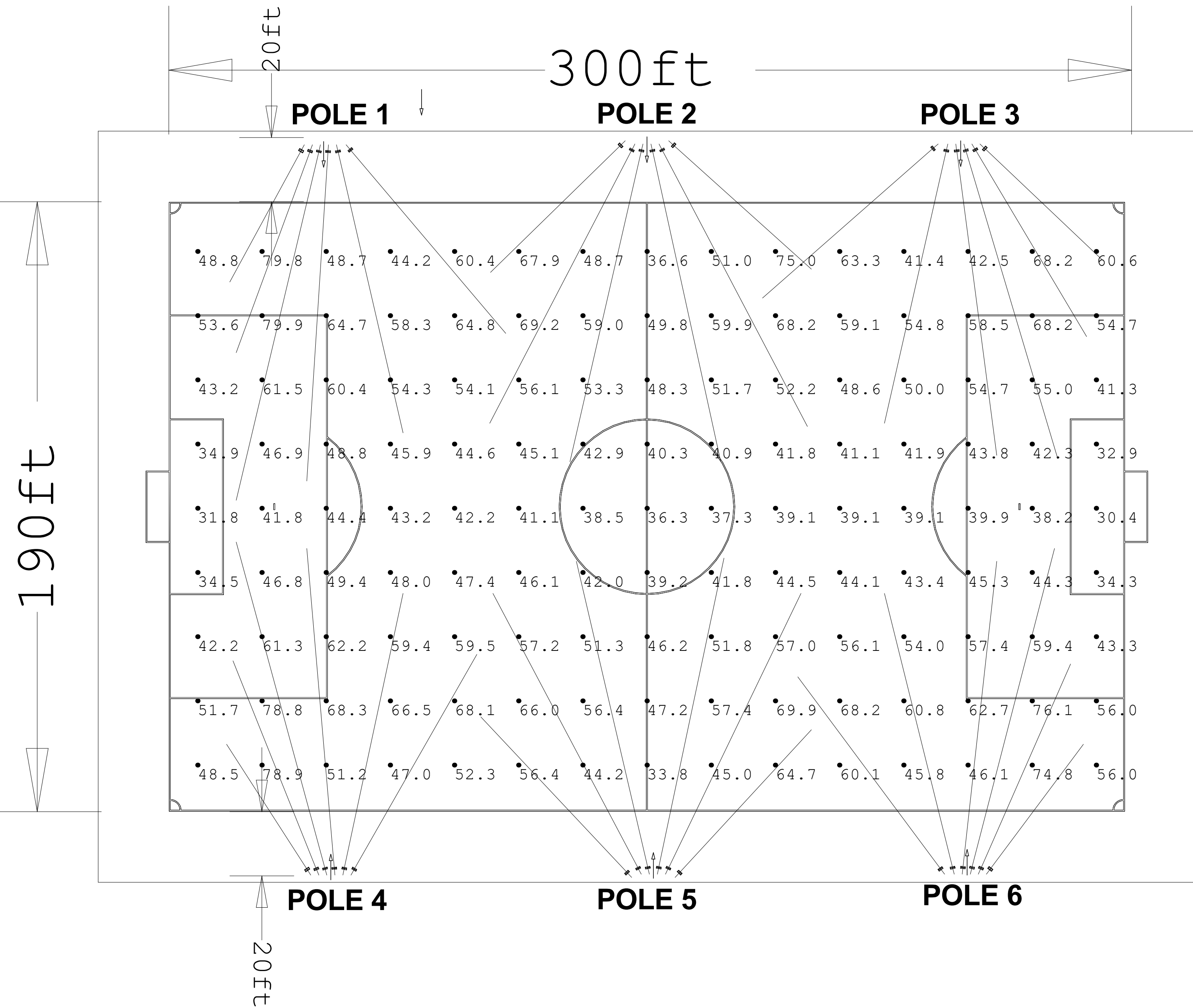
Calculation Summary						
Label	CalcType	Units	Avg	Max	Min	Max/Min
CalcPts_1	Illuminance	Fc	51.77	79.9	30.4	2.63

DESIGN NOTES:

- 1.
- 2.
- 3.
- 4.

LIGHTING DETAILS:

Luminaire Location Summary						
LumNo	Label	Insertion Point			Orient	Tilt
		X	Y	Z		
2	SP1	276.25	239	60	282.391	58.874
3	SP1	378.75	239	60	316.548	39.999
5	SP1	278.25	11.5	60	78.104	58.695
6	SP1	380.75	11.5	60	53.243	38.979
11	SP1	278.75	239	60	297.725	58.37
13	SP1	273.75	239	60	257.058	58.93
14	SP1	271.25	239	60	242.52	58.012
16	SP1	376.25	239	60	300.788	48.511
17	SP1	373.75	239	60	286.619	59.105
18	SP1	371.25	239	60	277.488	57.95
19	SP1	368.75	239	60	257.21	55.473
27	SP1	378.25	11.5	60	66.302	49.209
28	SP1	375.75	11.5	60	75.5	59.739
29	SP1	373.25	11.5	60	83.708	58.019
30	SP1	370.75	11.5	60	103.959	55.762
38	SP1	280.75	11.5	60	64.226	57.77
40	SP1	275.75	11.5	60	103.134	58.554
41	SP1	273.25	11.5	60	117.86	58.253
44	SP1	178.25	238.75	60	283.018	56.344
45	SP1	180.25	11.25	60	77.939	55.631
46	SP1	170.75	238.75	60	249.857	48.141
47	SP1	168.25	238.75	60	241.46	37.873
48	SP1	172.75	11.25	60	111.838	49.362
49	SP1	170.25	11.25	60	122.789	37.76
50	SP1	177.75	11.25	60	94.915	59.068
51	SP1	175.75	238.75	60	266.313	59.77
52	SP1	173.25	238.75	60	256.666	61.783
53	SP1	175.25	11.25	60	105.232	60.379
54	SP1	181.25	238.75	60	310.258	51.334
55	SP1	281.75	240	60	318.048	43.948
56	SP1	268.25	240	60	224.31	43.377
57	SP1	365.75	239	60	221.241	49.725
58	SP1	367.75	11.5	60	126.646	51.21
59	SP1	270.25	10.5	60	133.229	47.994
60	SP1	283.75	10.5	60	47.265	45.298
61	SP1	182.75	11.25	60	60.278	52.133

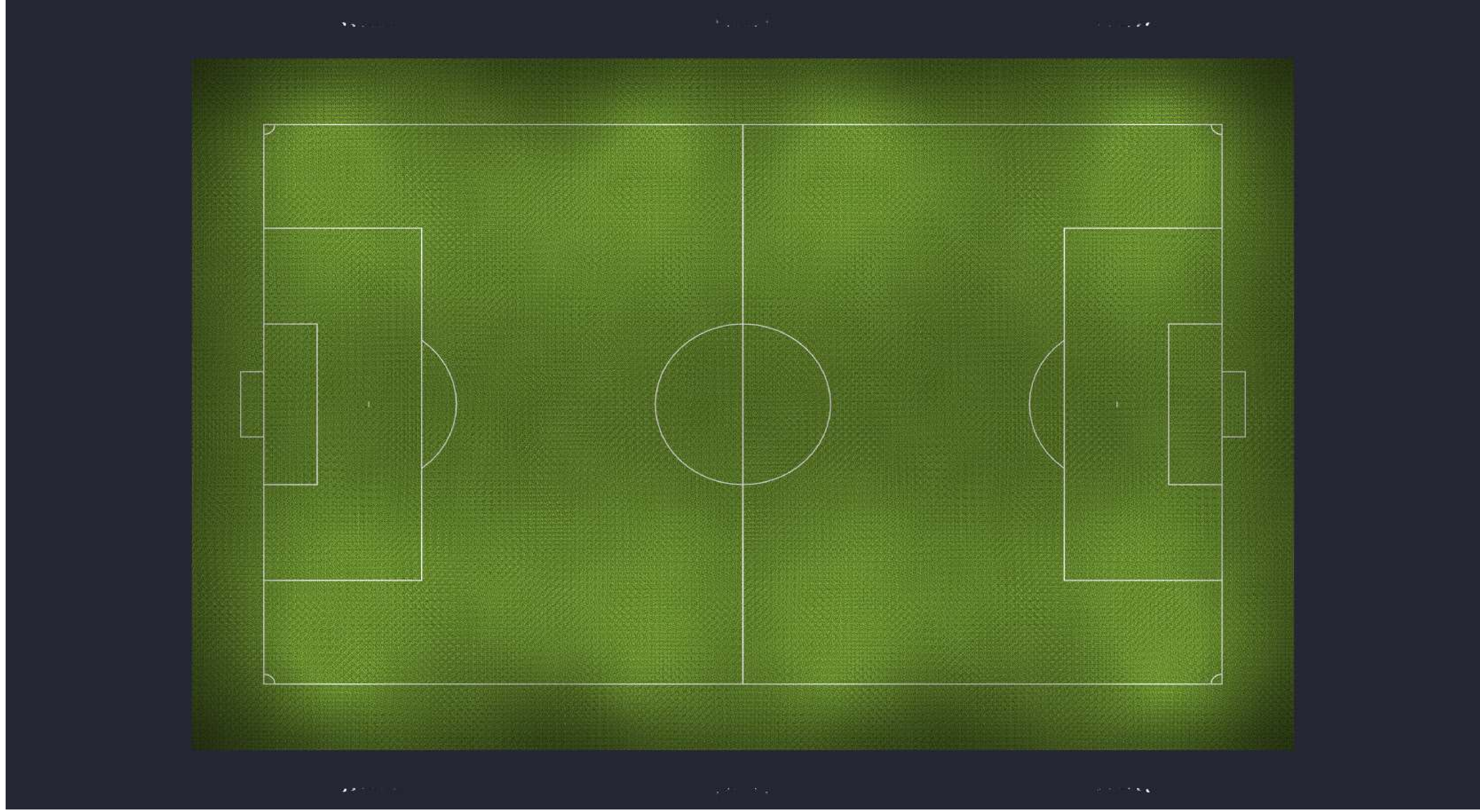


REGULATION SOCCER 6 POLE 1400W 60' MH

Date:9/18/2025

Drawn By:

Revision #:

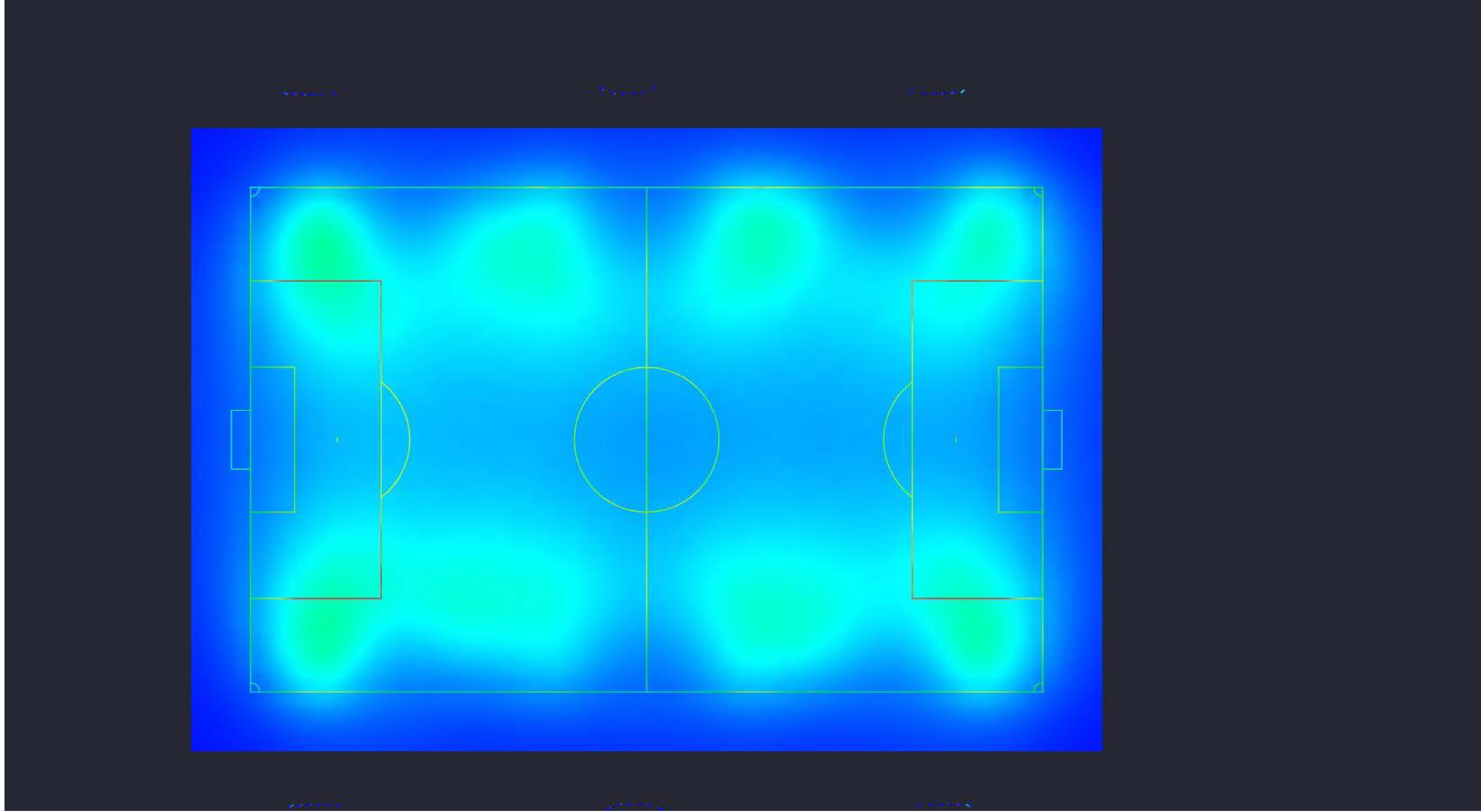


Date:9/18/2025

Drawn By:

Revision #:

REGULATION SOCCER 6 POLE 1400W 60' MH



Date:9/18/2025

Drawn By:

Revision #:

REGULATION SOCCER 6 POLE 1400W 60' MH